



## **PAMAS S4031 GO** **Portable Particle Counter for** **the use in harsh environment**

### **Portable particle counter in rugged case PAMAS GO**

**Mobile and compact measuring instrument for raw water, waste water and potable water, for organic and corrosive liquids, for filter test rigs and for component cleanliness control**

**User-friendly operation with touch screen and graphic display**

- The volumetric cell design of PAMAS sensors guarantees the highest accuracy, resolution and best statistical information
- Real portability with lab system accuracy
- Users can configure the system to their needs in profiles
- Highest repeatability and reproducibility
- Compact analysing system for liquids: raw water, waste water and potable water, organic and corrosive fluids
- Parts cleaning according to ISO 16232-9 and VDA-19
- Instrument can be used for batch and online sampling
- Sensor calibration with latex spheres according to ISO 21501
- Data storage of more than 4000 measurements

# PAMAS S4031 GO

## Portable particle counter for on-site measurements in harsh environment



The portable particle counter **PAMAS S4031 GO** measures fluid cleanliness and can be used for batch and online sampling.

The portable instrument can be directly used in the field. It includes an integrated battery for mains free operation on site. The measuring results are reported and printed instantaneously on site.

The **PAMAS S4031 GO** is small and light enough to fit into an aircraft overhead locker. The rugged case PAMAS GO is water tight and protects the instrument in harsh environments.

Including our tried and tested high quality laser based sensor technology, repeatable accurate measuring results are produced quickly and easily.

With 32 free adjustable size channels the system has the flexibility to match the most demanding applications.

The **PAMAS S4031 GO** is equipped with a user-friendly download software for transfer of stored measurement data to a PC as a basic feature. Data files are compatible with most spreadsheet software.

The optional carrying bag for the rugged case PAMAS GO is equipped with a shoulder strap and with three handy side pockets.



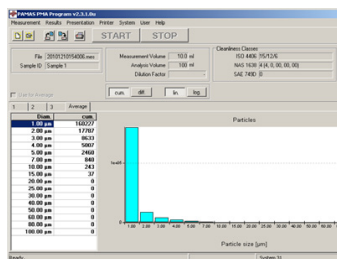
Carrying bag for PAMAS GO case



Management System  
ISO 9001:2015

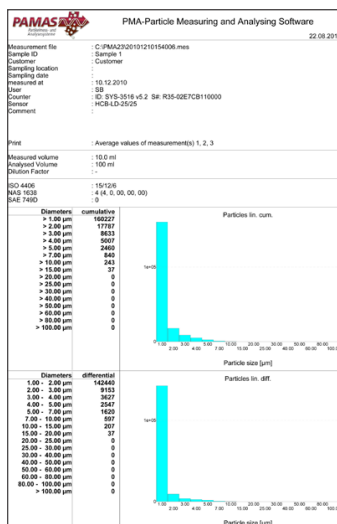
www.tuv.com  
ID 9105038017

### Remote control with software PAMAS PMA



*The population histogram shows cumulative and differential particle counts.*

Automatic storage and documentation in readable format. Classification of particle number and size within the sensor's size range.



*Complete documentation showing measuring results in absolute and relative numbers*

### Technical data

#### Sampling system:

- Wear resistant ceramic piston pump with controlled constant flow.

#### Particle Counter:

- 32-bit high performance CPU with sophisticated programmable digital domain signal conditioning and 4096 internal channels
- Data printout: 32 column thermo printer
- Data transfer: 8 bit ASCII code through USB port (57600 baud)
- Power supply: 90-230 V AC / 50-60 Hz or 12-30 V DC or via integrated battery for up to 3 hours operation
- Weight and Size: Approx. 8 kg 340 mm x 220 mm x 420 mm

#### Volumetric sensors: PAMAS HCB-LD-50/50

Size range: 2 - 200µm  
(1 - 400µm: option on request)  
Max. particle concentration: 24,000 p/ml\* at 25 ml/min\*\*

#### PAMAS HCB-LD-25/25

Size range: 2 - 200 µm  
Max. particle concentration: 120,000 p/ml\* at 10 ml/min\*\*

#### PAMAS SLS-25/25

Size range: 0,5 - 20 µm  
Max. particle concentration: 13,000 p/ml\* at 10 ml/min\*\*

**Other particle sensors for larger particle sizes or higher particle concentrations are available on request.**

- \* Coincidence error of 7.8%.
- \*\* Various flow-rates are available.

#### Option:

- Carrying bag

**PAMAS HEAD OFFICE**, Dieselstraße 10, D-71277 Rutesheim, Phone: +49 7152 99 63 0, Fax: +49 7152 99 63-32, E-Mail: info@pamas.de  
**PAMAS USA**, 1408 South Denver Avenue, Tulsa, OK 74119 USA, Phone: +1 918 743 6762, Fax: +1 918 743 6917, E-mail: clay.biolo@pamas.de  
**PAMAS BENELUX**, Mechelen Campus, Schaliënhoedreef 20T, B-2800 Mechelen, Phone: +32 15 28 20 10, Mobile: +32 477 42 48 62, E-Mail: paul.pollmann@pamas.de  
**PAMAS FRANCE**, Route du Tailleur 210/136, F-40170 Saint-Julien-en-Born, Mobile +33 6 25 33 20 41, E-mail: eric.colon@pamas.fr  
**PAMAS LATIN AMERICA**, Curitiba-Paraná, Brazil, Phone/Fax: +55 41 3022 5445, Mobile: +55 41 999 72 21 73, E-Mail: marcelo.aiub@pamas.de  
**PAMAS INDIA**, No. 203, I floor, Oxford House, #15 Rustam Bagh Main Road, Bangalore 560017, India, Phone: +91 80 41 15 00 39, E-Mail: info@pamas.in  
**PAMAS HISPANIA**, Calle Zubilleta No. 13 1ºB, ES-48991 Algorta, Mobile: +34 67 75 39 699, E-Mail: julian.malaina@pamas.de  
**PAMAS UK**, Sci-Tech Daresbury, Keckwick Lane, Daresbury, Cheshire WA4 4FS, Mobile: +44 79 17 71 33 66, E-Mail: graeme.oakes@pamas.de

Please visit our website at [www.pamas.de](http://www.pamas.de)