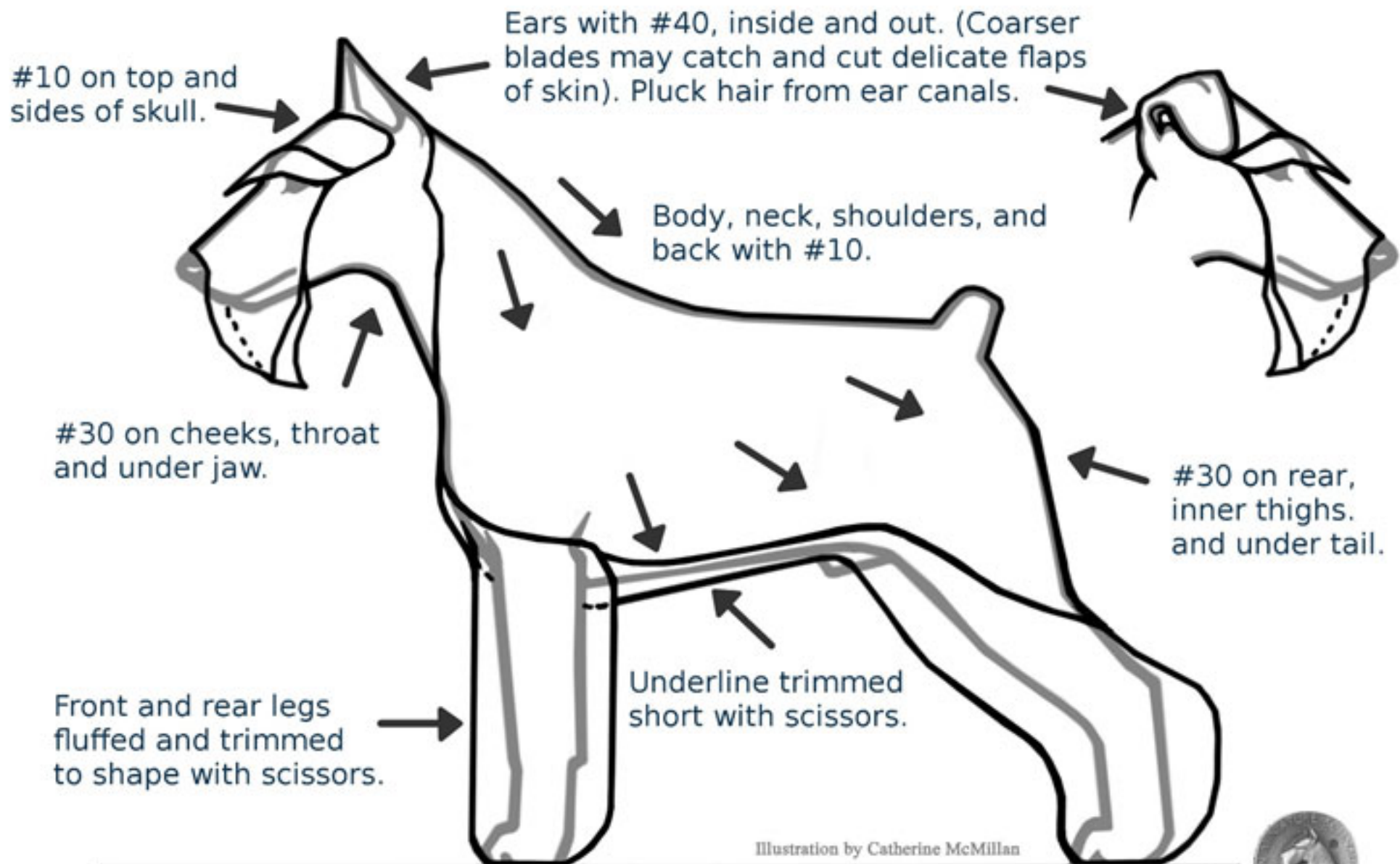


Trimming the Miniature Schnauzer



Copyright American Miniature Schnauzer Club

Blades sizes are for average, healthy dog with normal coat coverage. Dogs with sensitive skin or thin coat may require use of coarser blades. Always clipper in the direction of hair. Check blade temperatures frequently.



Trimming the Miniature Schnauzer

Clipper chest with #10, leaving a short fringe below forechest.

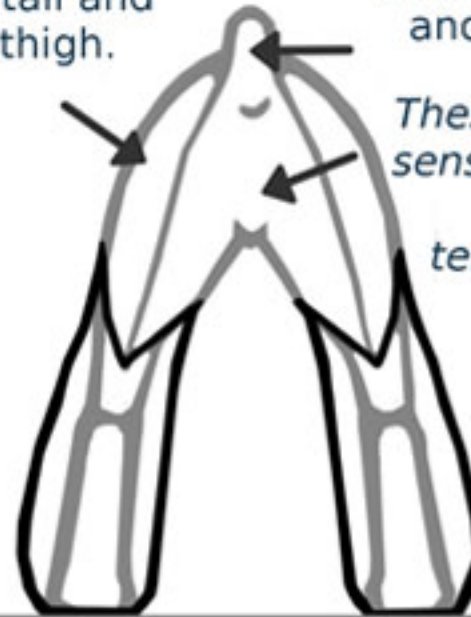
Blend chest into leg furnishings, and tidy fringe with scissors.

Clipper hair from "armpits" to prevent mats.

Feet are neatly rounded when viewed from all directions



#10 on tail and outer thigh.



#30 under tail, inner thigh, belly and genitalia.

These areas are sensitive. Check blade temperature often.

Clipper to navel



Copyright American Miniature Schnauzer Club

Illustration by Catherine McMillan

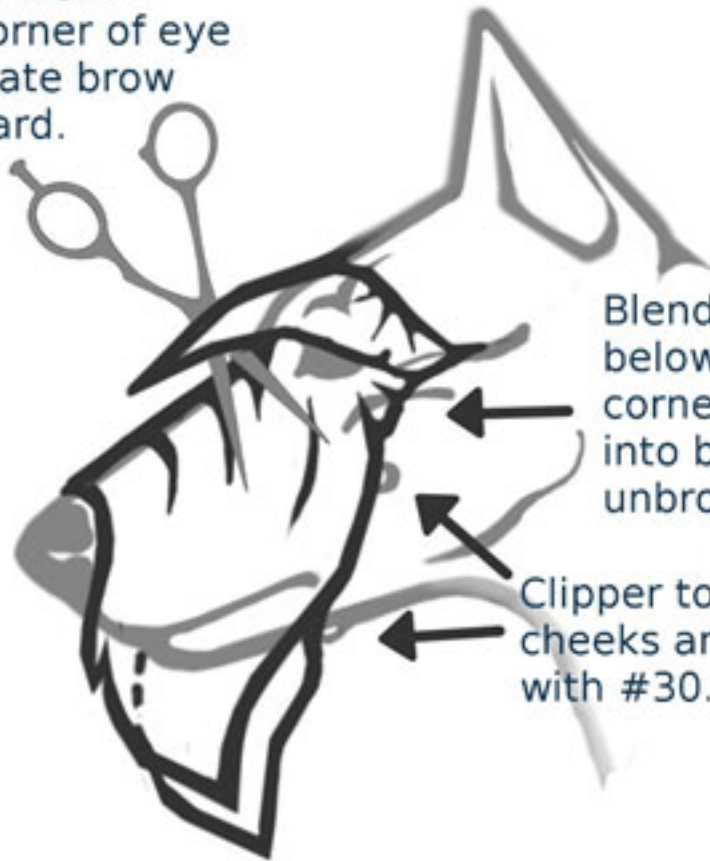


Remove hair from between pads with #30 or scissors.



Trimming the Miniature Schnauzer

Trim hair from inside corner of eye to separate brow from beard.



Blend hair from below back corner of eye into beard in an unbroken line

Clipper to moles on cheeks and underjaw with #30.

Excess beard: rake out dead hair, shape and shorten with thinning shears.

Space between eyebrows equals one thumb's width. Blend into skull with scissors.



Eye-brow length about 1/2 way to tip of nose.

Trim excess lashes out from under eyebrow - carefully!

Tidy shaggy hairs on upper lip.

Copyright American Miniature Schnauzer Club

Illustration by Catherine McMillan

