



**THE POND AND LAKE**  
— CONNECTION —

## **Bantam Lake & Bantam River/Little Pond Year-End Treatment Summary**



**2020**

1112 Federal Road, Brookfield, Ct 06804  
Telephone (203) 885-0184 Fax (203) 885-0873  
[www.ThePondConnection.com](http://www.ThePondConnection.com)  
NY 15201 / CT 2764 / NJ 99972A



## THE POND AND LAKE CONNECTION

Bantam Lake Protective Association  
PO Box 37 Morris, CT 06763  
C/O Connie Trolle  
12/31/20

As requested by the Bantam Lake Protective Association (BLPA) and the White Memorial Foundation, the following is a brief summary of treatments performed on Bantam Lake and the Bantam River in 2020. All activities conducted by The Pond and Lake Connection were performed by highly trained and state certified Aquatic Specialists, and permitted through the CT DEEP, NDDB, and DPH.

### **Summary of Activities:**

On 5/16, the first aquatic plant survey was conducted by AER to determine the areas with invasive Curly-Leaf Pondweed (*P. crispus*). Several areas were identified to have either sparse or dense stands of this plant, but the overall area affected was relatively low.

A second survey by AER on 6/27 was conducted to assess a broader range of species and their distribution/density. This summer survey showed many more plants species in numerous locations throughout the lake. This included Large-leaf Pondweed (*P. amplifolious*) which was found more extensively along the shoreline areas and later requested to be spot treated in key areas by the BLPA.

The first and only herbicide treatment within the lake was performed on 7/14. All information regarding public legal notices, newspaper notification and signs were provided to the BLPA to be posted as required. Any required local or CT agency notifications were done by The Pond and Lake Connection. This was followed up by a final survey conducted by AER on 8/23 to evaluate treatment areas and showed a significant reduction in nuisance plants within the requested locations.

Algae cell count and water quality data was collected numerous times throughout the season by AER. These were used by the BLPA and The White Memorial Foundation to determine if and when an algae treatment was needed. Two algae treatments were requested on 8/6 and 8/24. The same notification protocols were followed for each of these treatments.

1112 Federal Road, Brookfield, Ct 06804  
Telephone (203) 885-0184 Fax (203) 885-0873  
[www.ThePondConnection.com](http://www.ThePondConnection.com)  
NY 15201 / CT 2764 / NJ 99972A



## THE POND AND LAKE — CONNECTION —

The Bantam River and Little Pond located upstream of Bantam Lakes North Basin is periodically treated for invasive Fanwort (*C. caroliniana*). After not being treated for several years, this location was treated on 8/20 to reduce the extensive invasive plant populations in an attempt to keep this plant out of Bantam Lake. Both Little Pond and Bantam River were surveyed by AER on 7/14 and 10/1 to determine the efficacy of that treatment.

### **Recommendations:**

With the approval of a three year permit, renewal in 2021 should occur relatively early in the season. This will allow for proper management of Curly-Leaf Pondweed which should be a goal moving forward. This plant generates its reproductive turions and seeds around the beginning of May and any eradication effort should focus on treating this plant before that occurs if possible. This plant can have a large effect on increasing algae later in the summer due to its life history and it should not be allowed to proliferate.

Native plants should be encouraged to grow unless they become a hindrance to recreational activities. This would include swim areas, around docks or marinas, boat launches, and areas of boat traffic.

A robust monitoring program should be continued to document the location and density of plant species of concern as well as algae and water quality data. New populations of Fanwort, Milfoil or Curly-Leaf Pondweed should be identified quickly and not allowed to spread. If it is determined that underlying nutrient levels are elevated, then a nutrient reduction/sequestration approach with Phoslock may provide more long term benefits against harmful algae blooms.

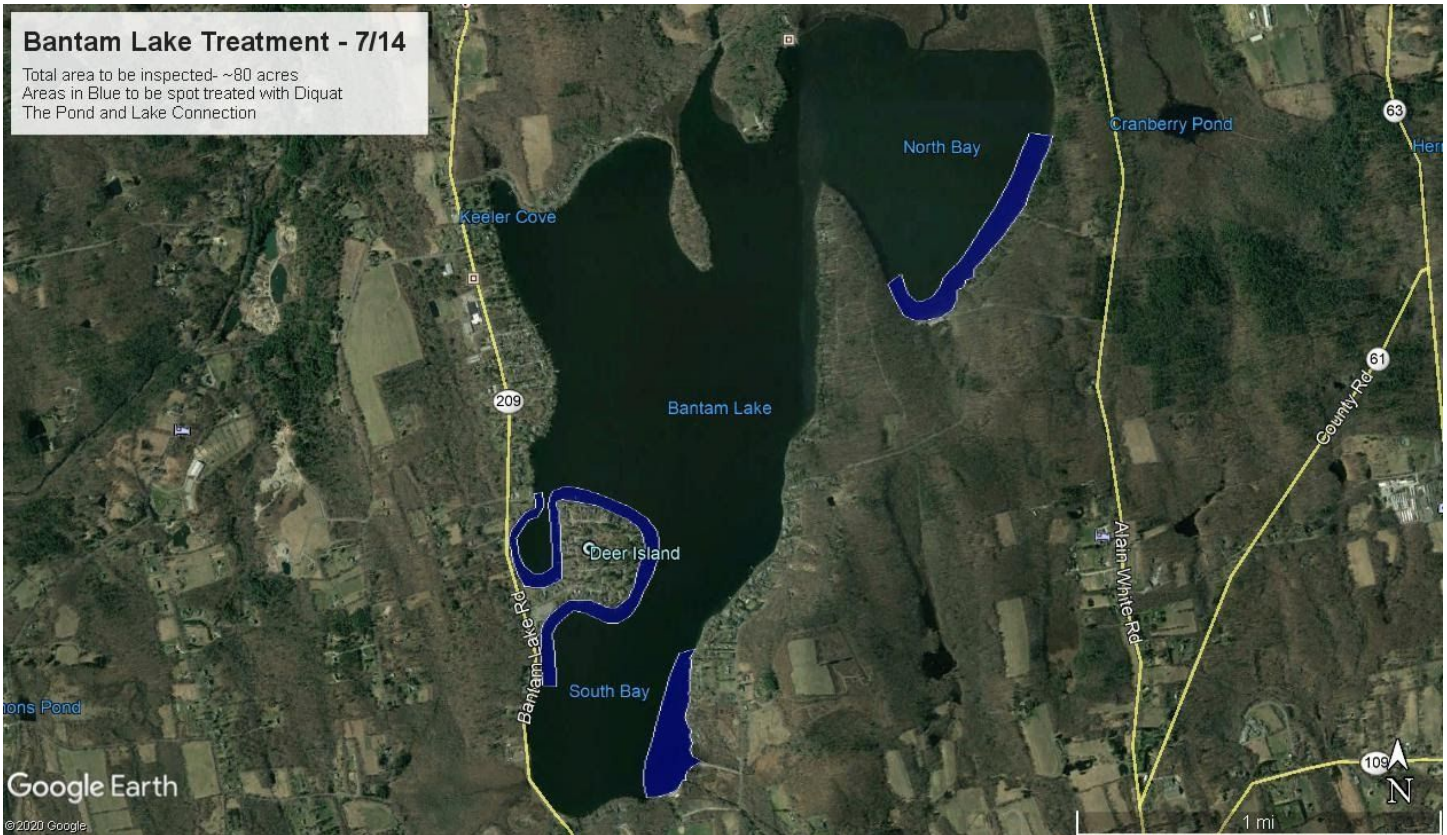
Nicholas McMahon  
The Pond and Lake Connection  
Aquatic & Fisheries Biologist

1112 Federal Road, Brookfield, Ct 06804  
Telephone (203) 885-0184 Fax (203) 885-0873  
[www.ThePondConnection.com](http://www.ThePondConnection.com)  
NY 15201 / CT 2764 / NJ 99972A





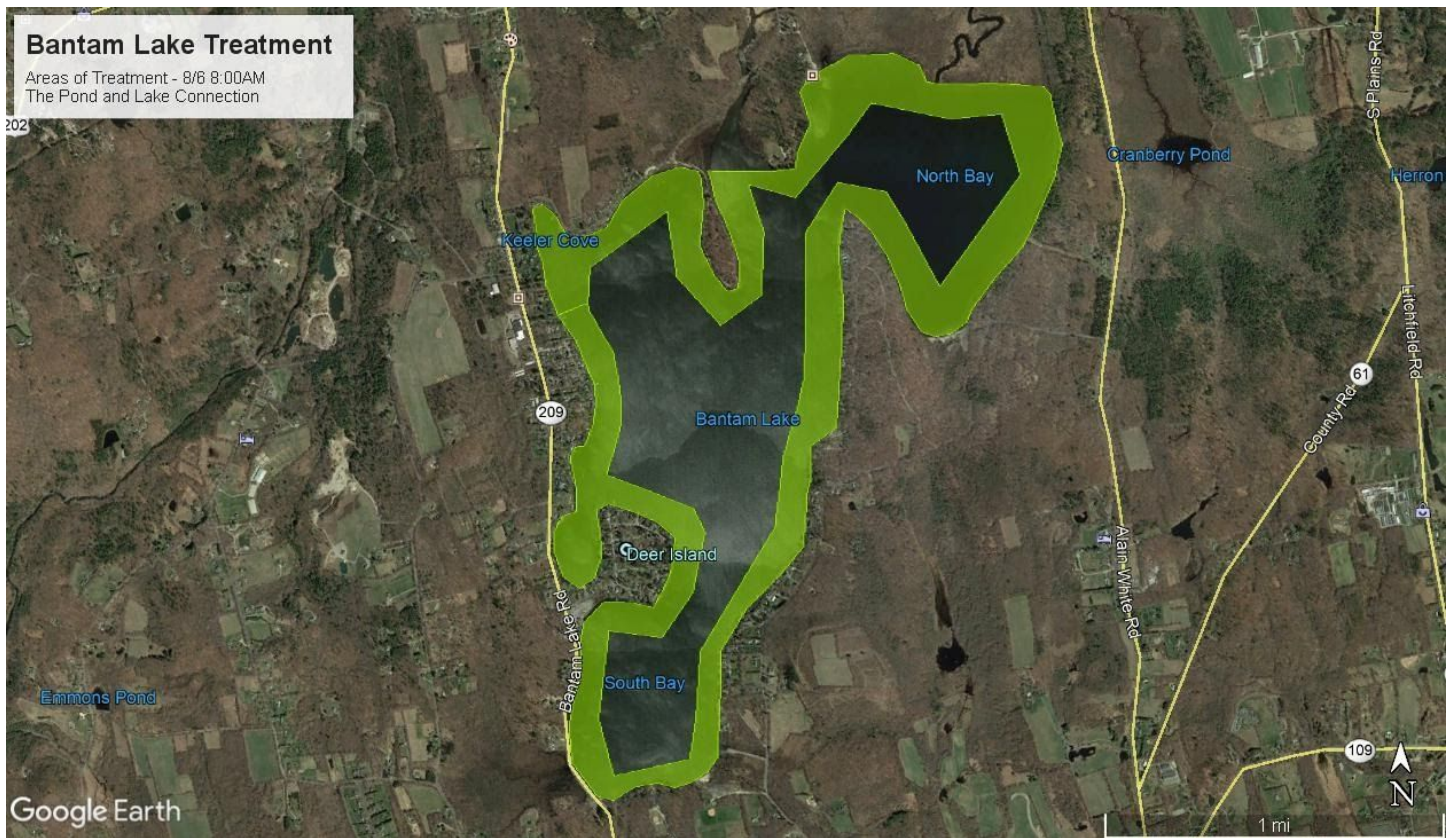
## THE POND AND LAKE CONNECTION



1112 Federal Road, Brookfield, Ct 06804  
Telephone (203) 885-0184 Fax (203) 885-0873  
[www.ThePondConnection.com](http://www.ThePondConnection.com)  
NY 15201 / CT 2764 / NJ 99972A



## THE POND AND LAKE CONNECTION

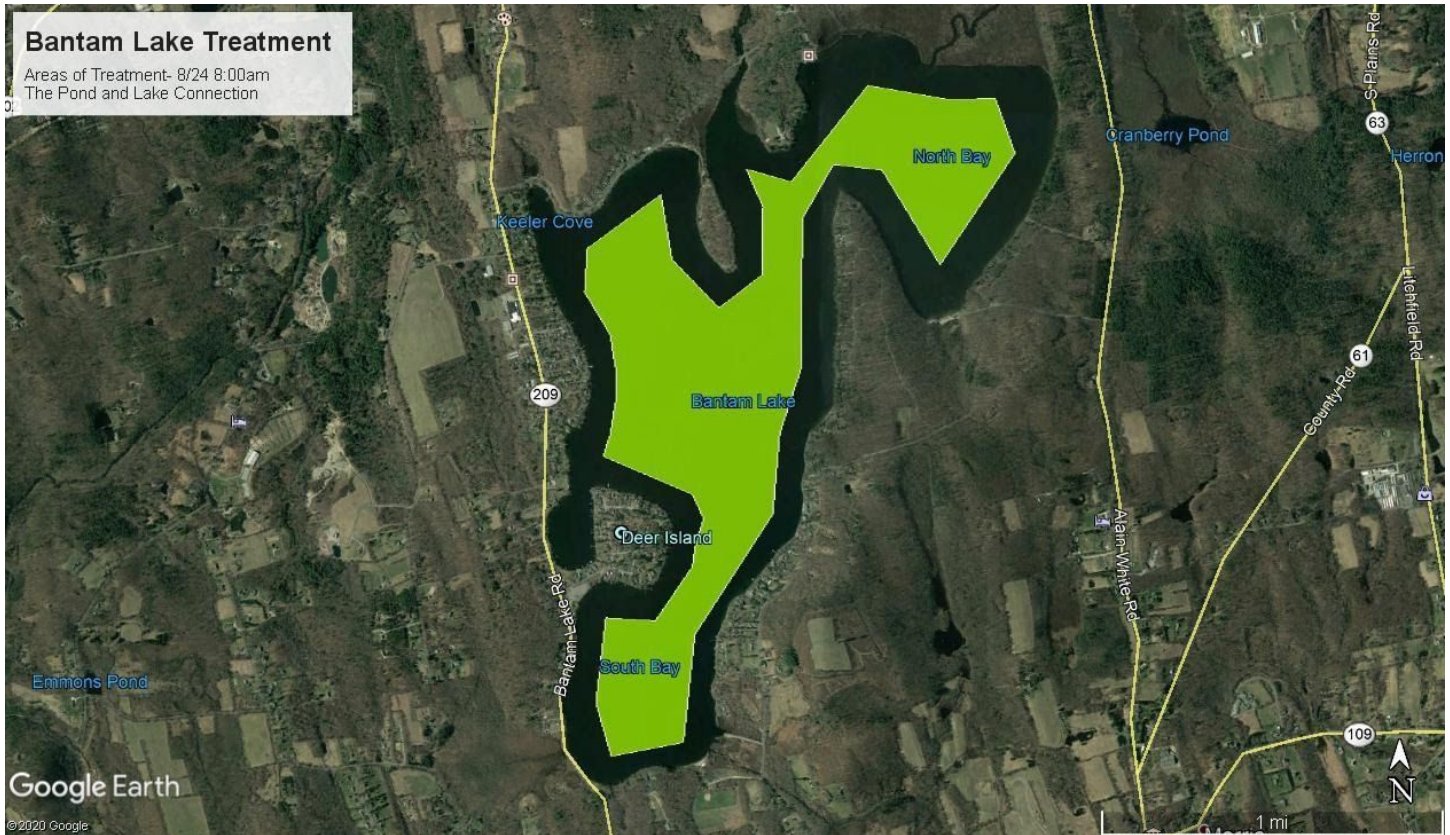


1112 Federal Road, Brookfield, Ct 06804  
Telephone (203) 885-0184 Fax (203) 885-0873  
[www.ThePondConnection.com](http://www.ThePondConnection.com)  
NY 15201 / CT 2764 / NJ 99972A





## THE POND AND LAKE CONNECTION

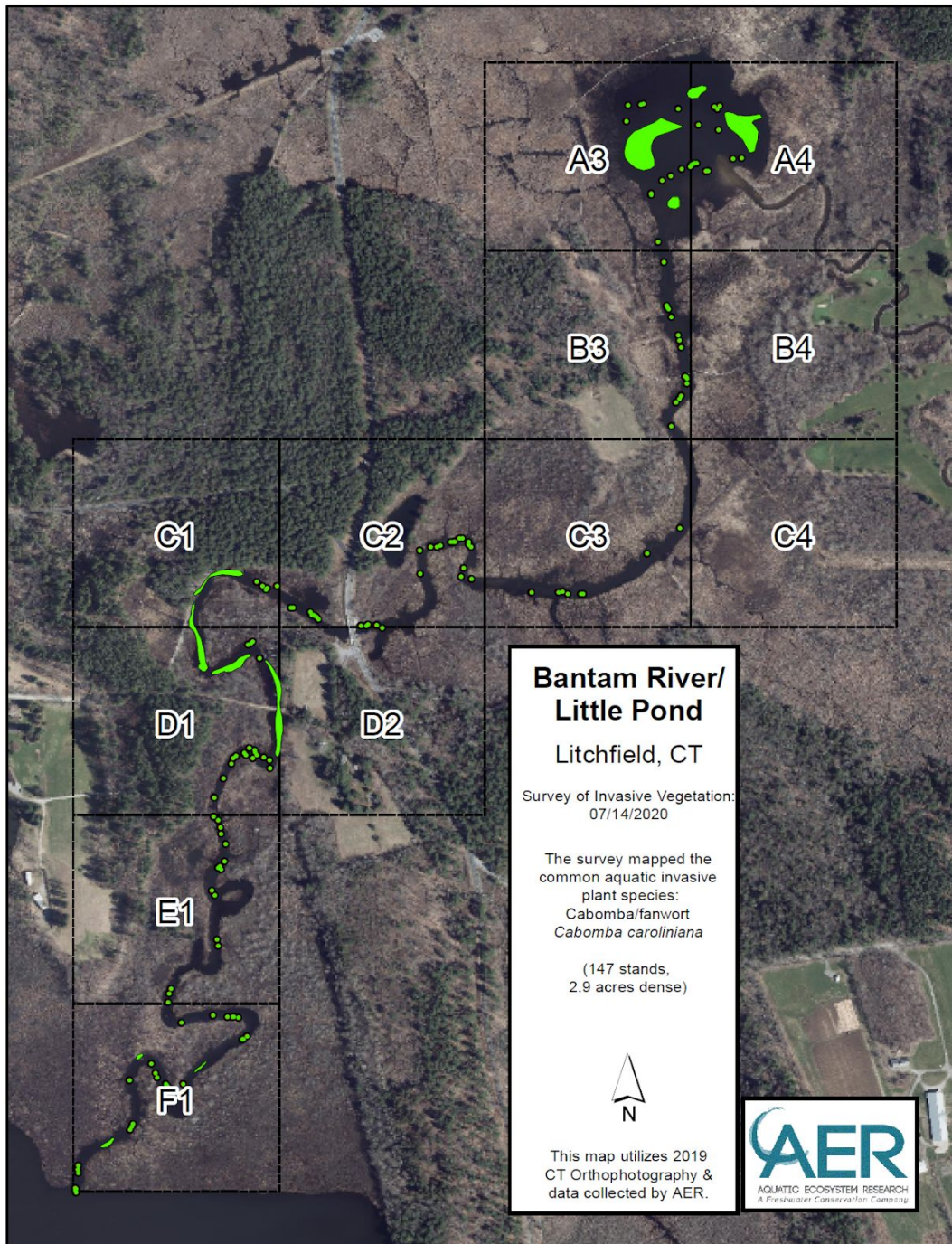


1112 Federal Road, Brookfield, Ct 06804  
Telephone (203) 885-0184 Fax (203) 885-0873  
[www.ThePondConnection.com](http://www.ThePondConnection.com)  
NY 15201 / CT 2764 / NJ 99972A





## THE POND AND LAKE CONNECTION



1112 Federal Road, Brookfield, Ct 06804  
Telephone (203) 885-0184 Fax (203) 885-0873  
[www.ThePondConnection.com](http://www.ThePondConnection.com)  
NY 15201 / CT 2764 / NJ 99972A





**THE POND AND LAKE**  
— CONNECTION —

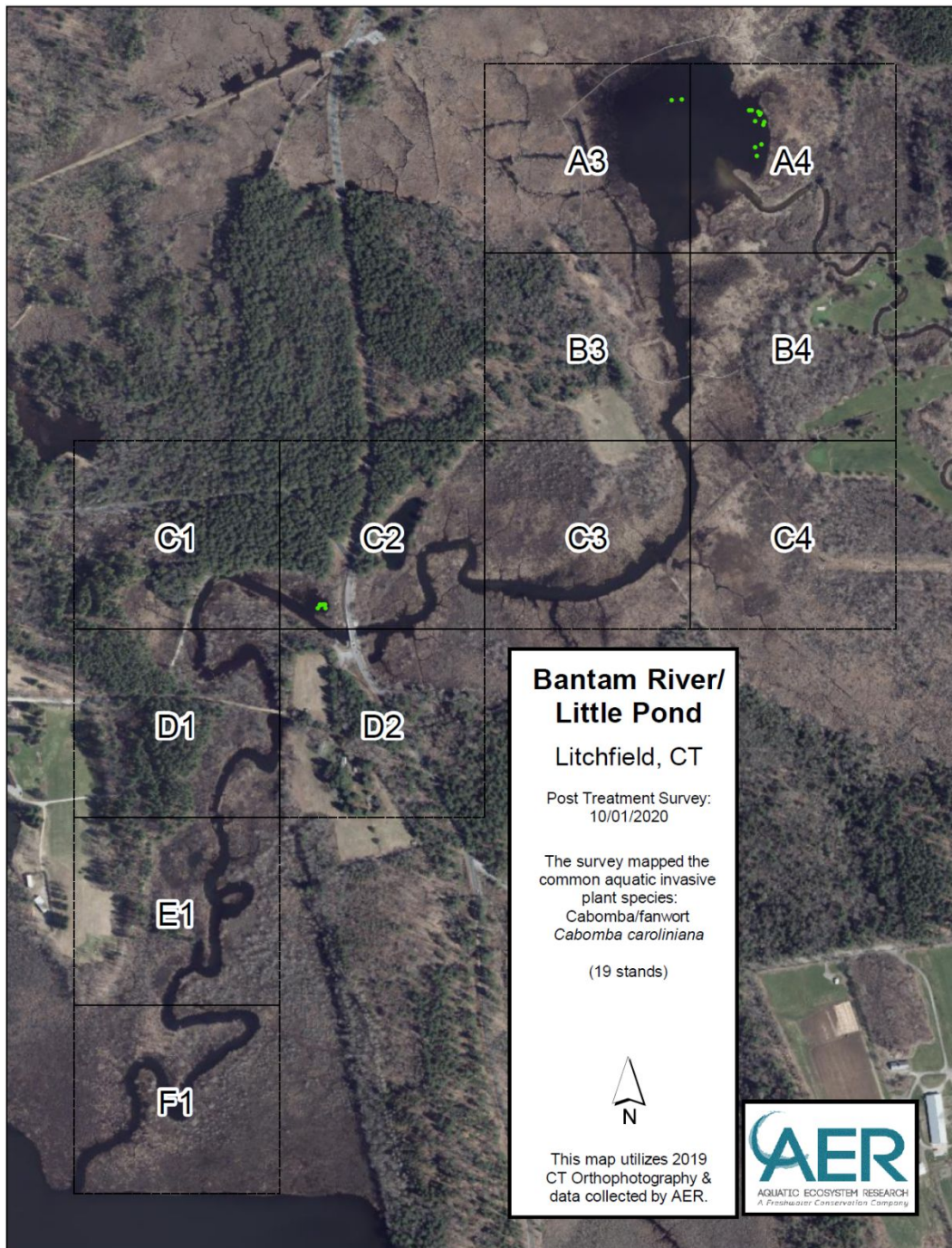


1112 Federal Road, Brookfield, Ct 06804  
Telephone (203) 885-0184 Fax (203) 885-0873  
[www.ThePondConnection.com](http://www.ThePondConnection.com)  
NY 15201 / CT 2764 / NJ 99972A





## THE POND AND LAKE CONNECTION



1112 Federal Road, Brookfield, Ct 06804  
Telephone (203) 885-0184 Fax (203) 885-0873  
[www.ThePondConnection.com](http://www.ThePondConnection.com)  
NY 15201 / CT 2764 / NJ 99972A



**THE POND AND LAKE**  
— CONNECTION —

**1112 Federal Road, Brookfield, Ct 06804**  
**Telephone (203) 885-0184 Fax (203) 885-0873**  
**[www.ThePondConnection.com](http://www.ThePondConnection.com)**  
**NY 15201 / CT 2764 / NJ 99972A**