



LM-D VISION

SISMA / DENTAL / LASER SYSTEMS / LASER WELDING



LM-D VISION, manual laser welding system with Syncro View.

Stable

LM-D VISION incorporates the Smart Spot technology for a repeatable welding process ensuring a wide depth of field and a stable laser firing already from the first pulses.

Comfortable

The patented Syncro View system ensures a smooth and stress-free process view even during the welding process. The new ergonomic design and low noise level ensure total operator comfort. The ECO function deactivates specific system components during periods of inactivity thereby ensuring reduced consumption.

Connected

LM-D VISION features USB and Ethernet connectivity for welding recipes download/upload and software and firmware update. The LM-D VISION machine can also be controlled remotely via smartphone, tablet or computer.



BROCHURE



TECHNICAL DETAILS

Applications LM-D VISION



CONTACT US

First name *

Last name *


Email *

Phone *

Company *

City *

Country *

Sector * 

Your message

I declare to have read and accept the Privacy Policy notification in all of its parts.

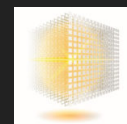
SEND

SISMA S.p.A.

Via dell'Industria, 1 [Cookie](#)
36013 Piovene Rocchette [Privacy](#)
Vicenza - Italia

tel. +39 0445 595511
fax +39 0445 595595
info@sisma.com

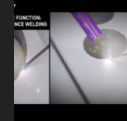
Latest news



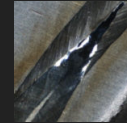
Dental welding starter kit



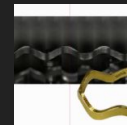
DFS (Dynamic Focus Shift), perfect laser markings ...



TRACKED ROUTES software functionalities, for molds...



POWER RAMP, optimized welding at critical points.

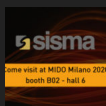


Coaxial Vision System

Events / Fairs



SISMA at LMT LAB DAY Chicago 2020



SISMA at MIDO Milano 2020



SISMA at EXPO MANUFACTURA 2020



SISMA at IGJME MUMBAI 2020

SISMA at AEEDC DUBAI 2020

**COMPANY WITH
QUALITY SYSTEM
CERTIFIED BY DNV GL
= ISO 9001 =**



© Sisma SpA

Registered Office: Via dell'Industria, 1 - 36013 Piovene Rocchette (VI) - Italy

Administrative Office: Via dell'Industria, 1 - 36013 Piovene Rocchette (VI) - Italy

Paid-in Capital: Eur 1.040.000 fully paid-in

N.Mecc. Vi 021431 - R.E.A. n.156983/Vicenza - VAT IT 01272440247