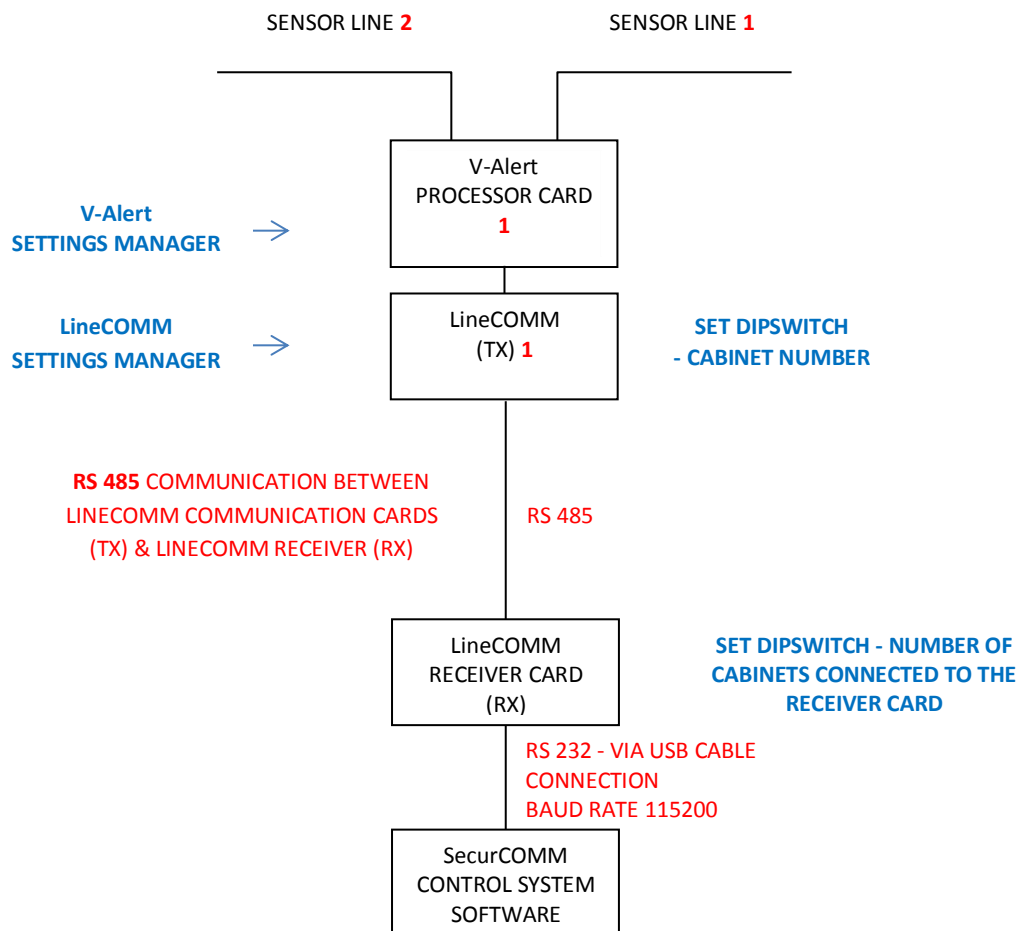


## LineCOMM SETUP – FREQUENTLY ASKED QUESTIONS

The following set-up procedure should be followed to ensure that the communication between the V-Alert Processor Cards, LineCOMM Communication System and SecurCOMM Software is operating correctly.

We have explained the settings required for the installation of one cabinet in the following configuration, and the same procedure should be followed for all of the cabinets in installations with more than one cabinet. The explanation below assumes that the installer is familiar with the V-Alert Settings Manager, LineCOMM Settings Manager and SecurCOMM Software.



## USING THE V-ALERT SETTINGS MANAGER

If the V-Alert Cabinet is connected to 2 V-Alert Sensor Lines, then set the Zone Number using the CARD SETTINGS WINDOW as follows:

Card Settings

Enter Password

07/12/2014 09:57:24

### Sensor Line 2

Relay 6- From Sensor 1 To Sensor: 17

Relay 7- From Sensor 17 To Sensor: 17

Relay 8- From Sensor 17 To Sensor: 17

Relay 9- From Sensor 17 To Sensor: 17

Relay 10- Normally ON Sensor Line 2 Cut

Zone Number: 002

Group Number: 1

Sensitivity Level: Level 3

Installed On: Chain Link Fence

Time Period	Alerts To Alarm	Power	Span X	Span Y	
1	15	2	11	30	21
2	15	2	20	35	27
3	15	2	30	40	35
4	15	3	40	45	41
5	15	4	50	50	51

### Sensor Line 1

Relay 1- From Sensor 1 To Sensor: 3

Relay 2- From Sensor 4 To Sensor: 7

Relay 3- From Sensor 8 To Sensor: 14

Relay 4- From Sensor 14 To Sensor: 14

Relay 5- Normally ON Sensor Line 1 Cut

Zone Number: 001

Relay Latched Time: 20

Group Number: 1

Sensitivity Level: Level 1

Installed On: Wall

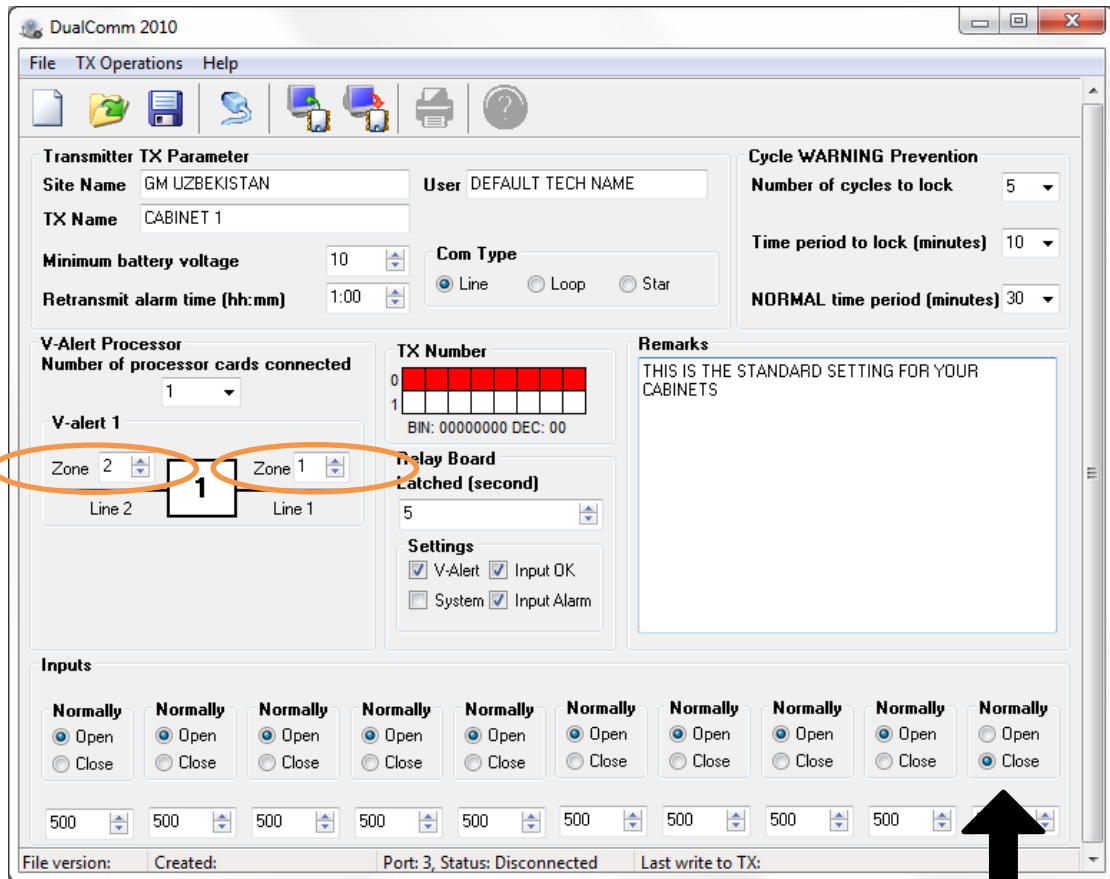
Time Period	Alerts To Alarm	Power	Span X	Span Y	
1	15	1	10	32	33
2	15	1	15	43	42
3	15	2	20	53	48
4	15	2	25	62	57
5	15	2	30	73	63

Status: Disconnected | User Mode

The ZONE NUMBER SETTING for Sensor Line 1 and Sensor Line 2 does not have to be consecutive numbers, it could be for example Sensor Line 1 – Zone 1 and Sensor Line 2 – Zone 20 or any other zone number for that particular project.

## USING THE LINECOMM SETTINGS MANAGER

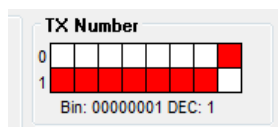
If the V-Alert Cabinet is connected to 2 V-Alert Sensor Lines and we have set the Zone Number using the V-Alert Settings Manager to Zone 1 and 2 for Sensor Lines 1 and 2 as explained above, then it is essential that the SAME zone numbers are entered in the LineCOMM Settings Manager.



Please note that the INPUT NUMBER 10 should be NORMALLY CLOSED in cabinets using a TAMPER.

**THE SAME ZONE NUMBERING PROCEDURE SHOULD BE FOLLOWED FOR ALL THE CABINETS OPERATING IN THE PROJECT – THE ZONE NUMBERS SET IN THE V-ALERT AND LINECOMM SETTINGS MANAGERS MUST MATCH FOR EACH CABINET INSTALLED.**

Use the WRITE TO TX button to save the settings. The DIPSWITCH on the LineCOMM TX PCB must be set according to the TX Number Dipswitch settings that will appear after completing the WRITE TO TX procedure.



In this example the TX card is TX NUMBER 1.

**IT IS ESSENTIAL THAT ANY PROJECT IS SET WITH A CABINET NUMBERED "1" followed by consecutive cabinet numbers.**

**ALTERNATIVELY set the DIPSWITCH of the TX can be set using the DIPSWITCH TABLE below.**

**PLEASE NOTE:**

**IN ORDER FOR THE SETTINGS AND DISPWITCH NUMBER TO BE ACTIVATED THE LINECOMM TX PCB SHOULD BE POWERED OFF AND THEN ON AGAIN**

**IN ORDER TO OPEN A NEW FILE FOR A DIFFERENT CABINET PLEASE CLOSE AND THEN RE-OPEN THE LINECOMM SETTINGS MANAGER.**

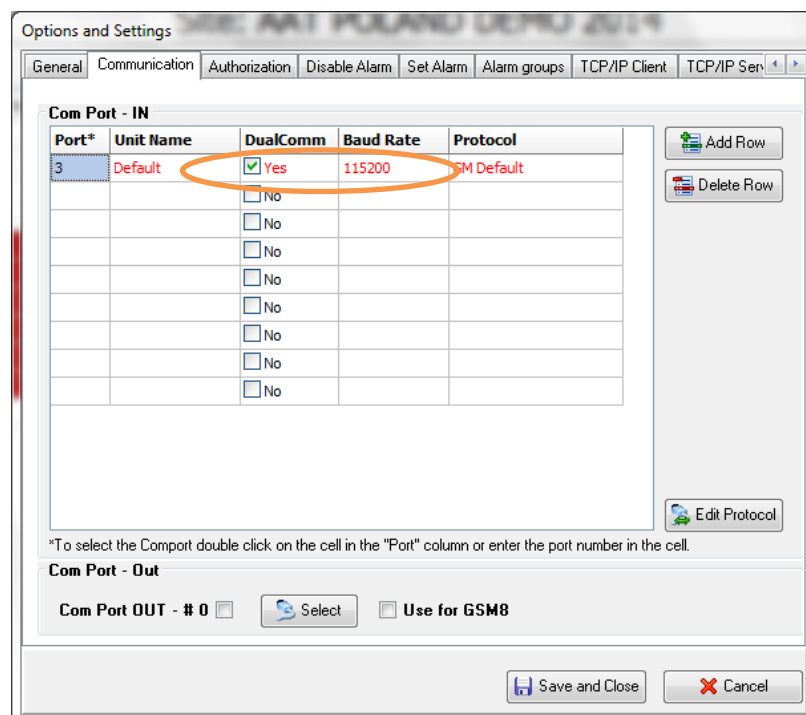
**LINECOMM RX DIPSWITCH**

Set the LineCOMM Receiver (RX) dipswitch number to the number of cabinets that are connected to the LineCOMM RX in that particular project.

**Please see the DIPSWITCH SETTINGS TABLE BELOW which show the DIPSWITCH settings for the LINECOMM system – which are different to conventional dipswitch settings.**

**USING THE SECURCOMM SOFTWARE**

Make sure that the BAUD rate is set at 115200 and the DualCOMM check box is marked YES.





## **PROJECT CABINET PLANNING TABLE**

CABINET NUMBER	NUMBER OF PROCESSOR CARD	LINE 1 SENSOR NUMBERS	LINE 2 SENSOR NUMBERS	TX NUMBER	LINE 1 ZONE NUMBER	LINE 2 ZONE NUMBER
1	1-50	1-50	1-50	1	01	02
2	1-17	1-17	1-50	2	03	04
3	1-50	1-50	1-50	3	05	20
4						
5						
6						
7						
8						
9						
10						
11						
12						
13						
14						
15						
16						
17						
18						
19						

## **SECURCOMM TX-ZONE-SENSOR SET-UP**

TX            1  
ZONE        01  
SENSOR     001