

FACIAL GALVANIC

REFERENCE MANUAL

carlton. professional

Setting the standard in electrotherapy equipment



This neat unit is designed for deep cleansing of the skin using Galvanic treatment (desincrustation) and aids a deeper penetration of products applied to the skin (iontophoresis).


We consider a purchase from Carlton Professional to be the beginning of a valued partnership

Welcome to Carlton Professional

Our business has manufactured professional beauty therapy equipment and furniture in the UK in our Sussex factory for over 40 years. In that time, our production has been used in the best training colleges around the world and many of the world's leading salon and spas.

Our range continues to evolve, with the addition of the very latest Carlton 'Concept' machines, that have seen the latest technologies of Radio Frequency and Electroporation added to our extensive range of treatment options. Our treatment product range that include specialist ampoules, ionised gels and serums, alongside pre and post treatment products perfected for every client, make Carlton Professional an affordable and profitable option for every salon and spa.





By partnering with **Carlton Professional**, you will have the support you need to grow as an aesthetic therapist, and as a business.



Feel reassured about gaining insurance cover, receive adequate knowledge and training, offer clients cutting edge technology, and receive the support you need as a therapist.



At Carlton Professional we offer you finance opportunities on purchasing, full training with purchases, Marketing support and help, launch event, ongoing events.



Be sure to book your launch event in today to help get your Carlton Professional treatment courses selling, and your clients looking fabulous!

Why our stockists choose Carlton Professional

Carlton team

A team passionate about creating excellent products and delivering a great service

Carlton quality in product manufacturing

Innovative, user-friendly products based on international scientific research.

In-house research & development creating advanced products that deliver results.

Use of high-grade raw materials and concentrated active ingredients.
No animal testing. Mineral Oil, Lanolin, Artificial Fragrance and Formaldehyde are Not used in our products.

Insistence on highest standards of manufacturing practice and quality control.

Carlton professional training

Education and support from dedicated training professionals.

Access to first rate training materials and literature.

Additional online support offered via interactive website

Carlton pricing

Highly attractive profit margins on retail products and professional treatments, making it a very viable business proposition.

Support for your **Carlton** business

Regular newsletters.

Access to a dedicated business website.

Advice on your salon via our consultation service.

Carlton promotional strategies & marketing materials

Sophisticated high profile marketing campaigns.

Great range of branded goods, as well as training and marketing materials.

Flexible systems which can be adapted depending on the salon space available.

Free samples with selected purchases.



The structure of the skin

It is estimated that our skin is made up of around 70 trillion skin cells making it the largest organ of the body. It gives us our shape by supporting all of our internal organs, bones and blood and provides a waterproof covering. The thickness of the skin can vary, the thinnest skin is around the eyes and eyelids, and is approximately 0.5mm, the thickest skin is found on the soles of the feet and can be up to 4mm in thickness. The epidermis is a vascular, nourished by diffusion from the dermis below it.

Skin Structure - Epidermis

The epidermis is made up of six layers, each plays a different part, and these layers are called

Stratum Germinativum – This is the deepest layer of the epidermis, also known as the Stratum Basale. It is within this layer that a process called mitosis takes place. Mitosis means cell division and that's exactly what happens, the cells divide making more new fresh, plump cells, it is here when the cell are first created that they are at their most receptive. As this process of mitosis happens, the older cells start to move upwards through the layers towards the surface. In this layer, blood vessels connect to the dermis and this is where, through deep product penetration to the epidermis, we are able to communicate with the dermis via this layer. The Stratum Germinativum also contains melanocytes; these are melanin producing cells which provide the body its natural protection against harmful UV rays.

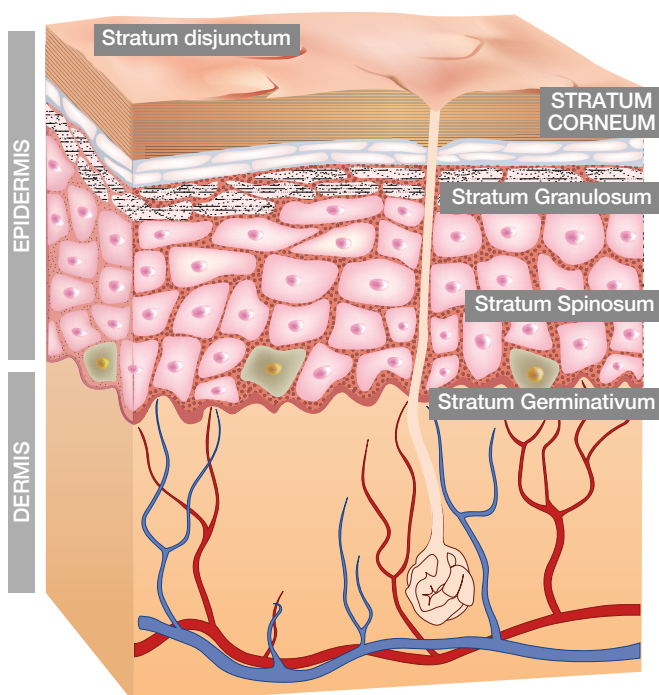
Stratum Spinosum– This is where the first stage of keratinisation takes place. Cells are pushed up from the Stratum Germinativum and begin to flatten slightly then start to synthesis keratin. This layer is also known as the prickly cell layer. Lipids are present in this layer; these lipids create a hydrolipidic barrier between the Stratum Granulosum and the Stratum Lucidum, which prevents dehydration.

Stratum Granulosum – Also called the granular layer, it is in this layer that keratinisation continues, the nucleus within the cells become void and starts to fill with keratin. The cells flatten further and continue to move up into the next layer.

Stratum Lucidum – This is a clear layer and has 2-3 layers of irregular clear flat cells. The Stratum Lucidum only tends to be found in thicker skin, therefore is commonly found on the soles of the feet and the palms of the hands.

Stratum Corneum - This layer is made up of between 15-20 layers of completely flattened cells, these cells are full of the protein keratin. This is the last part of the life cycle of the cell, which will eventually be shed from the skins surface. The keratin within these flattened cells, help to absorb water helping to keep the skin hydrated and preventing water from evaporating.

The Stratum disjunctum - This is the outer most layer and is part of the stratum corneum. The dead skin cells from this layer shed naturally over time. We lose between 30,000-40,000 dead skin cells from this surface daily, therefore the skin is constantly renewing itself. The desquamation process unfortunately slows over time the older we get.



The renewal of skin cells, or **Keratinisation**, on average takes 28 days, however, after the age of 36, your age represents the number of days the process of keratinisation takes.

Function - Epidermis

The whole process of a single cell moving up through the layers of the skin, takes approximately 28 days.

The epidermis is connected to the dermis by an undulating surface, due to this undulating surface; it gives a larger surface area, where all biological changes and nutritional exchange can take place. As we age, the epidermis and dermis start to separate, therefore causing all chemical reactions and processes to slow down quite dramatically, a classic example of this would be skin healing. When we are young, if we cut or graze the skin, it heals very quickly without too much trouble, however as we age, the process of healing can take much longer, meaning the skin is susceptible to infection. Therefore as we age, it is even more important to ensure we are taking care of our skin and treating it correctly.

The epidermis has a chemical protection called the acid mantle on its surface. The acid mantle is made up of sweat and sebum and these acts as a fungal and bacterial deterrent. The acidity of the skin helps to neutralise the chemical effects of contaminants, this is why skincare products are slightly acidic so as not to disrupt the skin's balance. Free radicals constantly attack our skin and can weaken this natural barrier; this is why it is so important to protect our skins from the sun.

Skin Structure - The Dermis

Within the dermis there are two layers, the lower layer is called the reticular layer, it is this layer that gives the skin its overall strength and elasticity, it has coarser elastin fibres and denser collagen bundles.

Above the reticular layer is called the papillary layer. This layer contains smaller looser collagen and elastin fibres. This layer has a rich blood supply and nerve supply which provides the basal layer (or Stratum Germinativum) of the epidermis with sensation and nutrients.

Function - The Dermis

Within the dermis are a number of specialised cells, all with important functions to carry out. Eccrine glands are the primary sweat glands of the human body; they produce a clear, odourless substance consisting mainly of water. Hair follicles are also found in this layer, attached to the hair follicles are little muscles called erector pili, these muscles lift the hair when the body gets cold to trap warm air and retain heat, and as you would expect, the muscles relax to flatten the hair to cool the body.

Nerves are also located in the dermis and enable the body to respond to pain, temperature, touch and pressure.

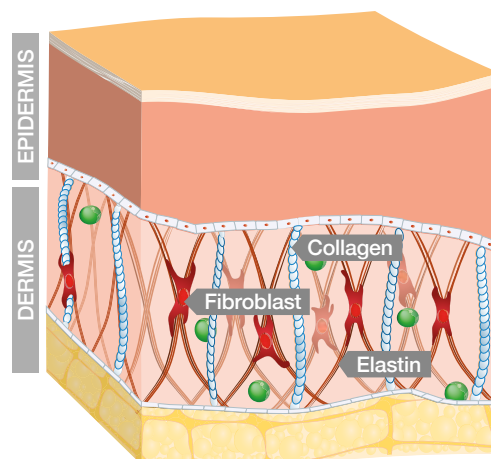
The proteins **collagen and elastin** are found in both layers of the dermis, but both have different effects on the body –

Collagen – Maintains the tone and structure of the skin because the molecules are rigid and

resistant to stretching. It is made up of three polypeptide chains wrapped around one another as a triple helix.

Collagen is formed in **fibroblasts** within the dermis, this can breakdown within the skin. The main cause of this is due to the enzyme Collagenase. This breaks down old collagen at a precise rate, however, this rate speeds up with sun damage, exposure to free radicals, age and UVA exposure (which is an inhibitor).

Elastin – Gives our skin resilience, keeping it toned, tight and springy. Like collagen it is produced by fibroblasts and forms a network of elastic tissue. The breakdown of elastin is what causes the skin to sag. Again, like collagen, elastin can also breakdown, the enzyme elastase is responsible for this breakdown under normal conditions, however with free radical attack, advanced ageing and sun exposure, this breaking down process will speed up resulting in an increased loss of elasticity within the skin.





Facial Galvanic

Facial Galvanic machines use a smooth-flowing Direct Current to perform a deep cleansing treatment, called Galvanic Desincrustation. The galvanic process is also particularly effective at increasing the penetration of products into the skin, this is known as Galvanic Iontophoresis. Both Galvanic processes are suitable for all skin types as the timings and intensities of the current used can be adjusted to suit the individual.

This electrical therapy is extremely safe, painless, integrates easily to optimize other protocols, and delivers dynamic, long-lasting results for every skin concern.

Advanced technology to penetrate skin specific complexes deep into the skin, providing long lasting results and radically improves key skin concerns.

Help to dissolve skin congestion, unclogging pores to achieve smooth, clear and clean skin. Ideal for oily and problem skins that experience blackheads and breakouts.

How does Galvanic therapy work on the skin?

Galvanic skin treatment is rooted in ‘galvanism’ discovered by Luigi Galvani, which shows the effects of electricity on muscle tissue. The principle of galvanism indicates that ‘charged ions in the skin are either attracted or repelled from the electrodes, resulting in certain chemical effects’. Based on that principle, the treatment works by penetrating active ingredients into the subcutaneous tissues of the skin with the help of the direct galvanic current.

Desincrustation

This first phase is aimed at cleansing the skin deeply by emulsifying the sebum trapped in the pores around the hair follicles. It is the ‘negative charge cycle’ in which a negatively charged pre-treatment gel (a sodium chloride solution) is used to cover the skin to be treated. Now, the negatively charged galvanic facial machine is moved over the skin smoothly to apply the galvanic current to it. This combination of the alkaline solution and electricity repels the negative charges present in the gel and pushes it into the deepest layer of the skin. Desincrustation basically softens the skin and prepares it for the safe and painless removal of comedones. It may again be followed by a manual extraction.

Iontophoresis

This second phase involves an electrochemical process (electro-osmosis) for nourishing the skin intensely. It is the ‘positive charge cycle’ in which a negative electrode is placed near the shoulder to push the positively charged water-soluble gel (with anti-aging components) deep into the epidermal layers of the skin. This increases the efficacy of all skincare products used afterward by neutralizing the toxins and harmful free radicals in the skin. Iontophoresis not only makes the skin firm and flawless with its amazing tightening effect but also soothes the endings of the nerves.



Galvanic skin treatment exfoliates and detoxifies the skin so that it feels healthy, bright, and relaxed. The electric current used in it stimulates the skin by enabling lymph drainage, which allows the skin to cleanse itself and draws out harmful toxins from deep within it.

Galvanic current boosts the circulation of blood to the surface of the skin and sloughs off dead cells promoting cell regeneration. This process helps in tightening and revitalising the skin.

Galvanic treatment keeps premature ageing at bay by boosting hydration and collagen production in the skin, thus restoring its balance and making it smoother. Works as a highly effective, non-invasive, anti-ageing treatment.

Products applied directly to the skin penetrate deep into the layers of the skin so that they are immediately absorbed.

Galvanic facial turns a rough and dull skin into a smooth and glowing one through deep cleansing, gentle exfoliation, and complete detoxification. It also makes the complexion significantly clearer and brighter.

As the negative ions in the Galvanic current draw all dirt, grime, and impurities out of the skin pores, they get unclogged and clear. This not only helps in reducing the appearance of acne but also prevents its further occurrences.



Application

Recommended treatment areas

Face, neck and décolletage

Double chin

Jaw line/Jowls

Eye area

Cheeks

Benefits

Cleanses and Detoxifies the Skin

Promotes Blood and Oxygen Flow

Provides Moisture and Nourishment

Improves Skin's Elasticity

Increases Product Penetration

Gives Smooth and Radiant Skin

Helps Control Acne

Contra-indications

Heart conditions or Pacemaker
or any other electrical devices

Metal plates or pins in the area
(artificial hip joints etc.)

Cancer

Thyroid disease and other
hormonal disorders

Deep vein thrombosis, varicose
veins, Inflammation of the veins,
phlebitis

Psychological disorders
(referring mainly to
schizophrenia)

Endocrine disorders
(Pheochromocytoma etc.)

Hyper-sensitive skin or heat
sensitivity

Pregnancy and/or
breastfeeding

Skin diseases and infections

Cuts, abrasions, bruises

Diabetes

Epilepsy

Very high blood pressure

Muscle paralysis

Blood thinning, anti-coagulant
medication

Rosacea or Excessive dilated
capillaries

Excessive or very apparent
surface vascular presence

Fillers and botox (to be
discussed)*



Therapists providing treatment should conduct a thorough consultation with clients and if they have any reservations about suitability for treatment should refer the client back to their G.P.

*Stimulation of the skin and muscle can cause Botox to be broken down faster, we are also stimulating a muscle that is temporarily frozen, this can cause an unusual sensation. Clients should avoid treatment in these areas until Botox has worn off, usually six months.

*Stimulation of skin and muscle may cause Dermal Fillers to move. Avoid until filler has dispersed.

Contra-actions

Some clients may notice the following effects. These are all normal reactions if observed in a mild effect. If any effect is noticed excessively it is vital to cease treatments immediately and refer the client to their GP. In this instance, be sure to take photographs, and fill in an accident book in accordance with your insurer's instruction.

Mild discomfort

Erythema (Redness)

Warm, or what appears to be over-sensitised skin

Mild Erythema will disappear a few hours after the treatment though either is rare, and you may want to consider and consult with client as to whether the treatment is right for them.

Client after care recommendations

Clients must avoid direct sunlight and commit to using SPF 30+, directly after, and during their treatment course for best results.

SPF30 protects up to 96% from UVA

SPF50 protects up to 98% from UVA

UVA penetrates the skin through to the dermis and breaks down the collagen. This is called "photoageing"

Recommended skincare products

MONUSKIN Hydrating Moisturiser SPF15

MONUSKIN Tinte Moisturiser SPF15

MONUSKIN Recover Balm

MONUSKIN Rich Cream Cleanser

MONUSKIN Deep Repair Complex

MONUSKIN Instant Soothing Serum

MONUSKIN Nourishing Treatment Oil

MONUSKIN Flash Relax Mask

MONUSKIN Lip & Eye Active Lift



If you are performing a Meso Lift Pro treatment, designed to increase collagen production, then the client **MUST** be applying an SPF. Otherwise, as soon as they leave the clinic, they are undoing all the work you/they are trying to achieve



Clients should avoid treatments that expose them to excessive heat soon after treatment, such as sauna/steam/sunbed. Vigorous exercise



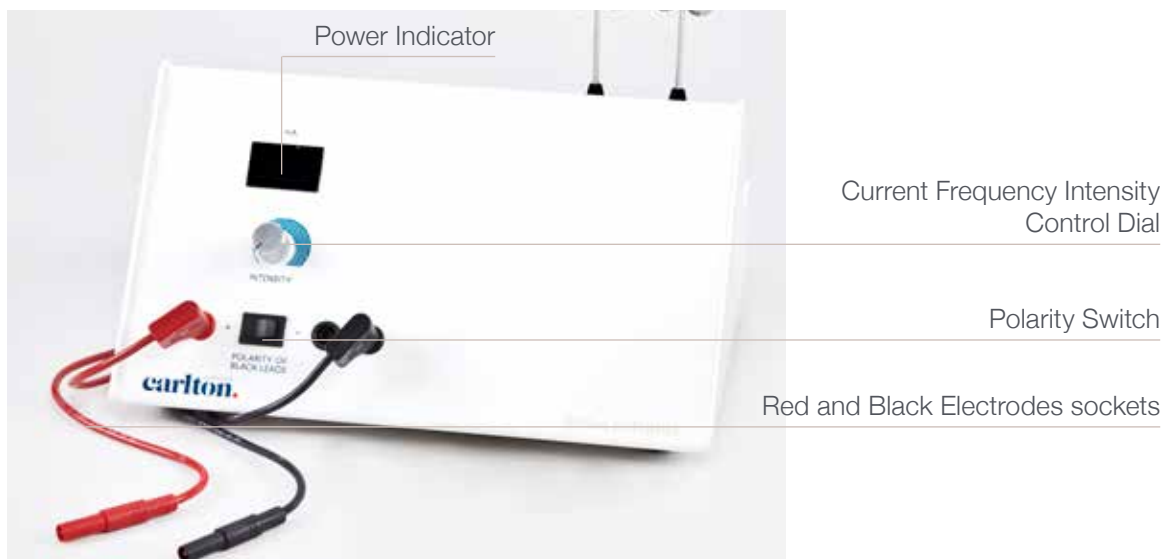
Clients should adhere to a strict skincare regime for best results, and use a regular collagen inducing/hydration inducing medium such as hyaluronic /collagen serums



Clients should drink two litres of water per day throughout course. Ask your client to drink half a litre just before coming for each treatment



Facial Galvanic instructions and care guidance



Single Probe
hand piece



Cleansing sponge



Sponge Applicator
hand piece



Facial Galvanic procedure

1

DESINCRUSTATION

CLEANSE:

Cleanse, tone and blot the skin dry.

PRODUCTS: Desincrustation Gel

ELECTRODES:

Cleanse Electrodes with sponges

POLARITY: Negative

TIMINGS:

Dry/Sensitive Skin: 2-3 minutes

Normal/Combination 5 minutes

INTENSITIES:

Dry/Sensitive Skin: 0.15mA

Normal/Combination 0.20mA

Oily/Acne 0.25mA

Remove dirty Desincrustant Gel, tone the skin, & blot dry.



2

IONTOPHORESIS:

Select the appropriate Iontophoresis Ampoule and Gel for the client. Either mix both together in a bowl, or apply the ampoule directly to the skin, and paint a thin layer of gel over the top.

PRODUCTS:

Ionto Ampoules & Gels

ELECTRODES:

Rollers or Twin Ball Electrodes

POLARITY: Negative

TIMINGS:

Up to 10 minutes on all skin types

INTENSITIES:

Dry/Sensitive Skin: 0.15mA

Normal/Combination: 0.20mA

Oily/Acne: 0.25mA

i Always finish on a positive note". Reverse the polarity to POSITIVE for an additional 2-3 minutes at the end.

Remove excess gel, tone, and moisturise to complete the treatment



Products to complete treatment routines

To complete a Facial Galvanic Treatment, Carlton Professional have the following range of NEGATIVELY ionised products.

IONTOPHORESIS AMPOULES

AH – ACTIVE HERB

A combination of herbal extracts which have a closing effect on the pores. Helps restore the skin's natural appearance

AV – ALOE VERA

Especially for problem skin; helps to take down redness associated with acne conditions & can help the skin recover from acne scarring.

CA – CELL COMPLEX

To raise blood circulation and promote cell metabolism. Aids the reduction of undesirable cellulite. The only ampoule suitable for use during a body galvanic treatment.

CC – CLEAR COMPLEX

For oily skin, prone to excessive sebum secretion. Has antiseptic & astringent properties.

CL – COLLAGEN

Promotes suppleness & elasticity of the skin. Helps to maintain the moisture balance of the tissues

HR – HYDRO REGULATOR

Healthy skin has an exact regulation of moisture. Sun, wind & cold weather are extremely drying. Use to stabilise the moisture content.

IC – INFUSION COMPLEX

To increase cell respiration & regenerate the skin. Regular treatment will regenerate the skin

NC – NOURISH COMPLEX

For intensive treatment of tired & wrinkled skin

RJ – ROYAL JELLY

The active ingredients of royal jelly help to rejuvenate the skin by participating in cell regeneration & promoting blood circulation

RC – RESOLUTION COMPLEX

For broken veins, contains factor "R" to avoid capillary vessel damage

SC – SOOTHE COMPLEX

For highly sensitive & allergic skin. The active ingredients calm the skin & help avoid irritation

GALVANIC GELS

DG - DESINCRUSTANT GEL

For Desincrustation only. Suitable for all skin types.

IONTOPHORESIS GELS

Available in the following variations:

DS – Dry Skin

NS – Normal Skin

GS – Greasy Skin

SS – Sensitive Skin

DC – Dilated Capillaries

EL - ELECTRO LOTION

To overcome the skin's natural resistance, & decrease the skin's static barrier. Allows current to penetrate the skin further.

ML - MOISTURISING LOTION

To soften & protect the skin following any electrical facial treatment. Suitable for all skin types.

OZ – OZO CREAM

For use in all high frequency treatments. Oxygenating to the skin.

CL – COLLAGEN

capillary vessel damage

SC – SOOTHE COMPLEX

For highly sensitive & allergic skin. The active ingredients calm the skin & help avoid irritation



How to sell the treatment

- ✔ For best results courses should be taken in twelve sessions, every 5 days. For the purposes of pricing, you wouldn't treat for any longer than 30 minutes in a session, and then add time, depending on which treatments/products you team it with

- ✔ So that you can be commercially attractive to all budgets, we would generally recommend you also offer shorter courses. We also suggest an introductory offer to get clients in for that first treatment, giving you the opportunity to upsell a course to them

- ✔ Offer courses of 6 and 12.
Offer 4 for the price of 3 as a one off "try me" promotion

- ✔ Create a Meso Lift Pro Facial as per procedure taught

- ✔ Create a Meso Lift Pro Deluxe as an extended procedure with added massage, Occlusive mask, and ampoule

- ✔ Create a bespoke facial with added electrical treatments, masks, ampoules, serums. Tier the facial, Platinum, Gold and Silver - price accordingly

- ✔ Combine with our RF Pro machine for the ultimate electrical anti-ageing treatment
