

GOGUEN
KITCHEN & BATH



MEASURING GUIDE

SEE HOW QUICK AND EASY IT IS TO MEASURE YOUR KITCHEN!

IT'S EASY

Our Measure Guide is easy to use (yes, it really is easy) and helps collect the basic information to help you and your designer start your design. This does not have to be a work of art but just a clear and accurate drawing of your space. If you want to use the attached graph paper, that's great. If not, then all we need is your drawing. We're here to help — please call **978.534.5294** with any questions.

1

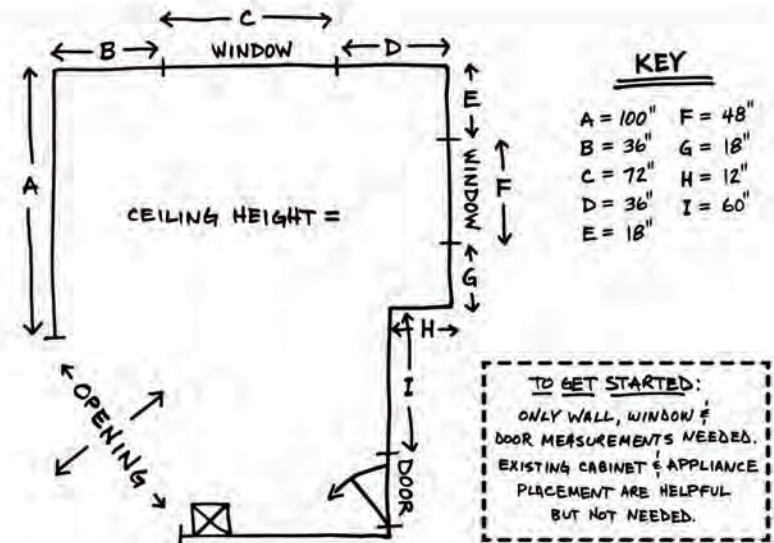
Step 1: Your Kitchen Shape

Draw your kitchen as a box showing all the walls that you think will have cabinets. Be sure to include any major structural features or obstacles.

2

Step 2: Draw It Out

Mark any openings such as windows and doorways. Be sure to include radiators or other obstacles that affect where cabinets can be installed. Now, label all the openings in your kitchen. In this sketch we'll use areas A thru I. Record these letters as a key on your sketch.



IT'S EASY

3

Step 3: Measure

Now it's time to get out the tape measure. Measure all the openings, from outside edge to outside edge, and fill in the key. If you're uncomfortable with precise measurements feel free to round to the nearest inch. Remember this is just to get started, your designer will confirm details later.

4

Step 4: Your Layout

Most people already have a good idea of where the major items will go in their kitchen. Feel free to draw your ideas of what you would like and include the placement of your sink and appliances.

5

Pictures of Your Kitchen

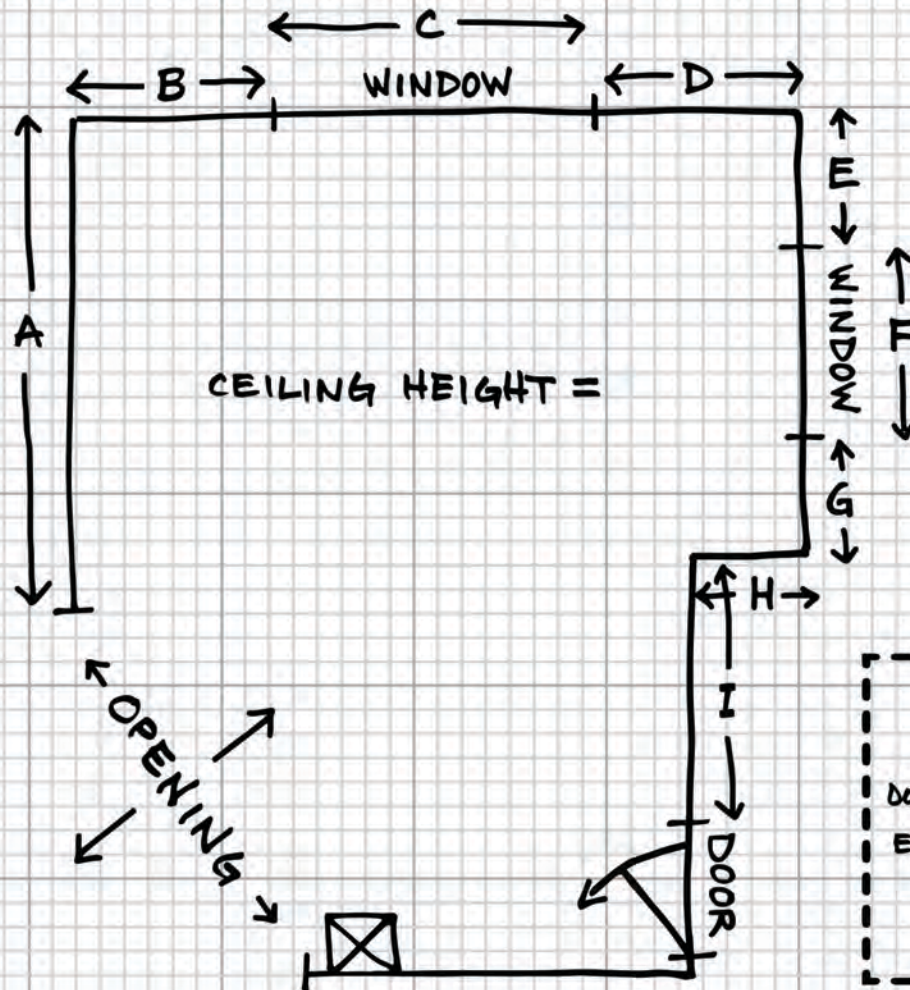
What can really help your designer is to take 'before' pictures of your kitchen and send them along with your measurements.

That's it! You're done! It is that easy to measure your kitchen.



YOUR INFO & SKETCH: EXAMPLE

Name Jane Smith Door Style Dayton
Email jsmith@email.com Finish Color Painted White
Phone 555-123-4567 Who can we thank for your referral? John Jones



KEY

A = 100"	F = 48"
B = 36"	G = 18"
C = 72"	H = 12"
D = 36"	I = 60"
E = 18"	

TO GET STARTED:
ONLY WALL, WINDOW &
DOOR MEASUREMENTS NEEDED.
EXISTING CABINET & APPLIANCE
PLACEMENT ARE HELPFUL
BUT NOT NEEDED.

DRAWING DOES
NOT HAVE TO BE
PERFECT OR TO
SCALE - JUST
NEAT. FEEL FREE
TO USE ANY
PAPER YOU'D LIKE.

YOUR INFO & SKETCH

GOGUEN
KITCHEN & BATH

Name Door Style

Email Finish Color

Phone ----- Who can we thank for your referral? -----

SEND IT TO GOGUEN KITCHEN & BATH

You're almost done. Just forward your information and measurements form to us.



EMAIL

heather@goguenconstructioninc.com

15 mb max per email, if larger please submit multiple emails.



SMART PHONE

Take pictures of the form and your drawing and email them to:

heather@goguenconstructioninc.com



FAX

978-798-1388



MAIL

Goguen Kitchen & Bath
55 Mead Stret
Leominster, MA 01453



Don't forget pictures!

A picture is worth a thousand words.
Send them along with your drawing.