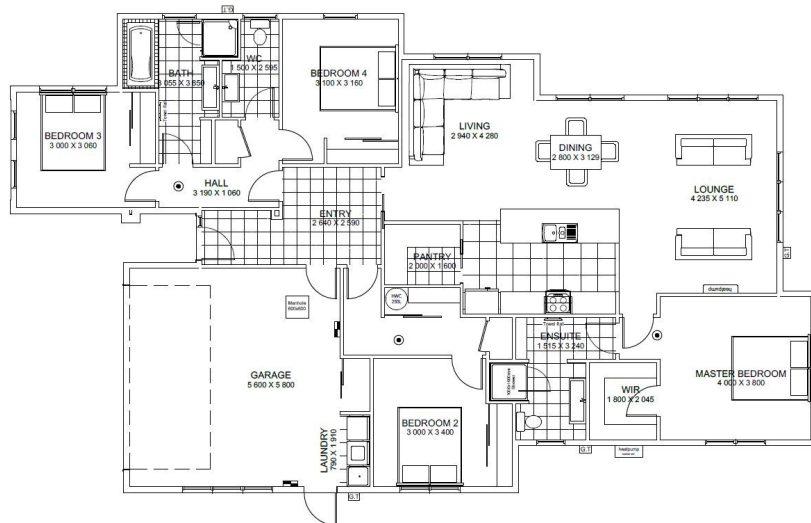




Asking Price \$654,500



Floor Area 208m²

Land Area 538m²

Silverstream, Kaiapoi—located 15 mins from Christchurch airport, 10 mins from Rangiora, and currently 25 mins to the centre of Christchurch—which will decrease to 15 mins with the Northern Motorway Corridor upgrades finishing at the end of 2020. This makes Silverstream not only accessible but it is also a beautiful place to live. With streamside walking tracks, beautiful green spaces and a full retail village housing over 10 health and wellbeing businesses, including café, Medical Centre, Pharmacy, Dentist, Restaurant and Dairy.

This home plan's specification and plan can be modified to suit your requirements and budget—but make no mistake—this home is a spectacular example of a superior design and build by Bainbridge Homes.

This package price is valid until 30/09/2019 and includes house, land, fencing, driveways and crossing. The design and illustration of this plan has a copyright on it and is the property of Bainbridge Homes and may not be copied or reproduced in whole or part without written consent.

Gary Wilson
021 543 787
gary@bainbridgehomes.co.nz
www.bainbridgehomes.co.nz

