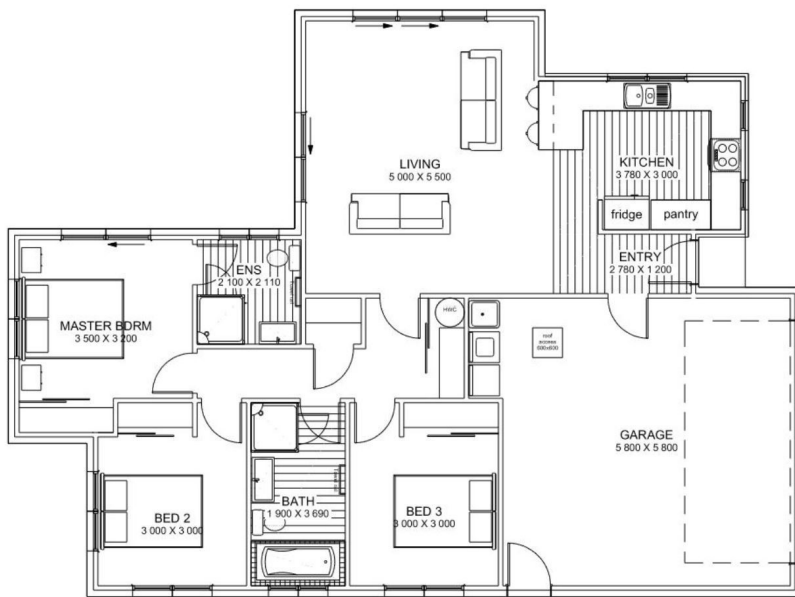




Asking Price \$478,000



What could be better than waking up to the lovely fresh air and views to the mountain, with the added bonus of being able to stroll into town, drop the children at school or take part in the many community events happening weekly in Rolleston.

This is no small town, no; this is New Zealand's largest growing town, and we want you to come and see just how great it is.

The Oakmont plan is cleverly designed three bedroom, two bathroom house – small enough to not be spending all your weekends cleaning, but enough space for a family to live comfortably.

Considering Rolleston? Then consider Olivefields!

Talk to Gary today on 021 543 787.

Floor Area 147m²

Land Area 627m²

This House and Land price includes house, land, fencing, landscaping, letter box, clothesline, driveways and crossing. The design and illustration of this plan has a copyright on it and is the property of Bainbridge Homes and may not be copied or reproduced in whole or part without written consent.

Gary Wilson
021 543 787
gary@bainbridgehomes.co.nz
www.bainbridgehomes.co.nz

