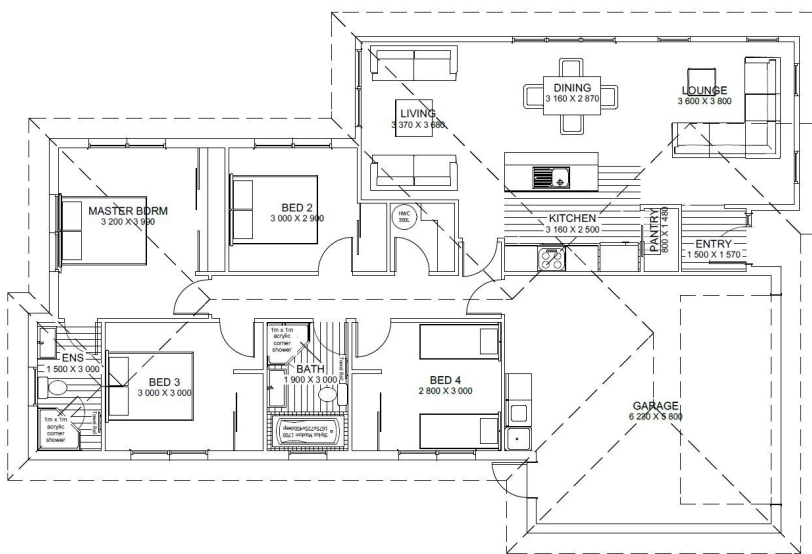




**Asking Price \$495,800**



**Floor Area 165m<sup>2</sup>**

**Land Area 569m<sup>2</sup>**

Choose Bainbridge Homes as your builder of choice and prepare to be spoilt with knowledge, understanding, time and support. We are here to make your dream become a smooth and successful reality!

The Waverly V1 plan is from our First Step series, and is a popular choice with families, investors and young and old couples alike.

The bedrooms are large, storage plentiful, with two lounge areas, generous bathrooms, and a lovely outdoor area from the living spaces to enjoy in the summer months.

This plan can be modified, up-specified, and changed to meet your requirements, wish-list and budget. We can help you choose the perfect section for you and help choose design features that make your home stand out from the crowd! Call us today!

This package price is valid until 30/09/2019 and includes house, land, fencing, driveways and crossing. The design and illustration of this plan has a copyright on it and is the property of Bainbridge Homes and may not be copied or reproduced in whole or part without written consent.

**Lindy Hayes-Thompson**

**027 889 3773**

**[lindy@bainbridgehomes.co.nz](mailto:lindy@bainbridgehomes.co.nz)**

**[www.bainbridgehomes.co.nz](http://www.bainbridgehomes.co.nz)**

