

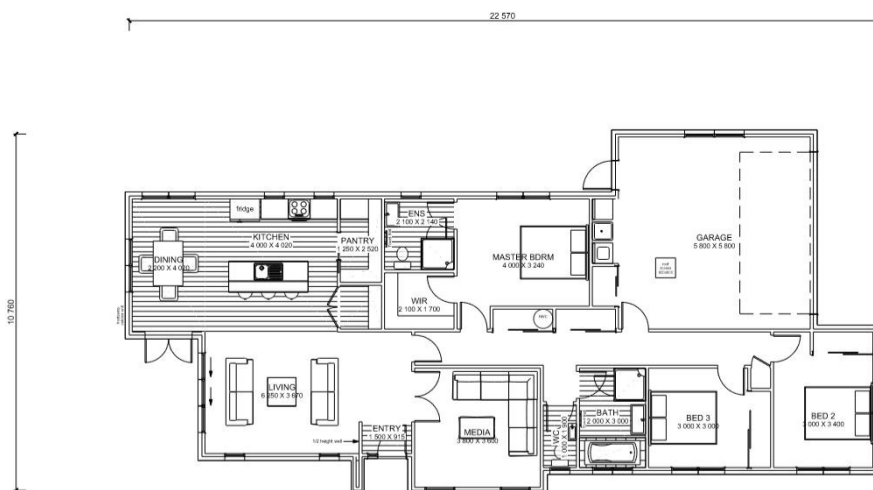


Asking Price \$525,724

Nestled on the fringes of South Rolleston, Olivefields stands out as not just an ordinary place to live, but a thoughtfully planned, personalised and sustainable-living sub-division with our goal to produce healthier, cleaner and more efficient homes.

The St Andrews plan is a plan to suit nearly everyone around - first home owners, downsizers, investors, owners with flatmates—you name it, it has the potential to suit—and it could be all yours!

With titles due in February and sections on sale now, today is the time to talk to us about the opportunity to start your new life in Olivefields, Rolleston. Call Steve on 027 360 9088, or visit us at Riccarton Mall, upstairs in the Bainbridge Homes Kiosk.



Floor Area 191m²

Land Area 640m²

This House and Land price includes house, land, fencing, landscaping, letter box, clothesline, driveways and crossing. The design and illustration of this plan has a copyright on it and is the property of Bainbridge Homes and may not be copied or reproduced in whole or part without written consent.

Steve Rod

027 360 9088

steve@bainbridgehomes.co.nz

www.bainbridgehomes.co.nz

