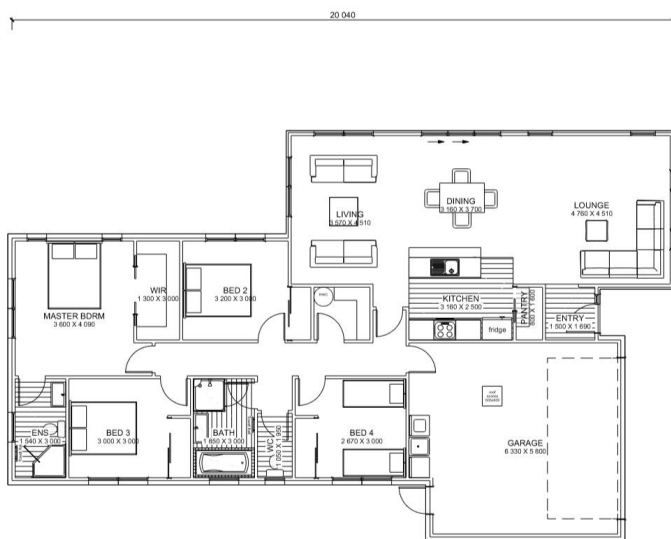




 4
  2
  2

Asking Price \$535,519



Floor Area 192m²

Land Area 630m²

Build your dream and live the way you want to in this beautiful first-step series plan.

The layout is functional for families or flatmates, and the section size ensures a large and wonderful outside space to utilise in the warmer months, entertaining and playing.

Four bedrooms, master with walk-in-robe and ensuite is at the back of the house, creating a private space. The walk-in-pantry and linen cupboard are both luxuries in a what is a great valued home.

The spacious living area allows everyone in the home to enjoy their own area. A double garage is attached with the laundry within, so space is not compromised. Call today to discuss.

This House and Land price includes house, land, fencing, landscaping, driveways and crossing. The design and illustration of this plan has a copyright on it and is the property of Bainbridge Homes and may not be copied or reproduced in whole or part without written consent.

Gary Wilson
021 543 787
gary@bainbridgehomes.co.nz
www.bainbridgehomes.co.nz

