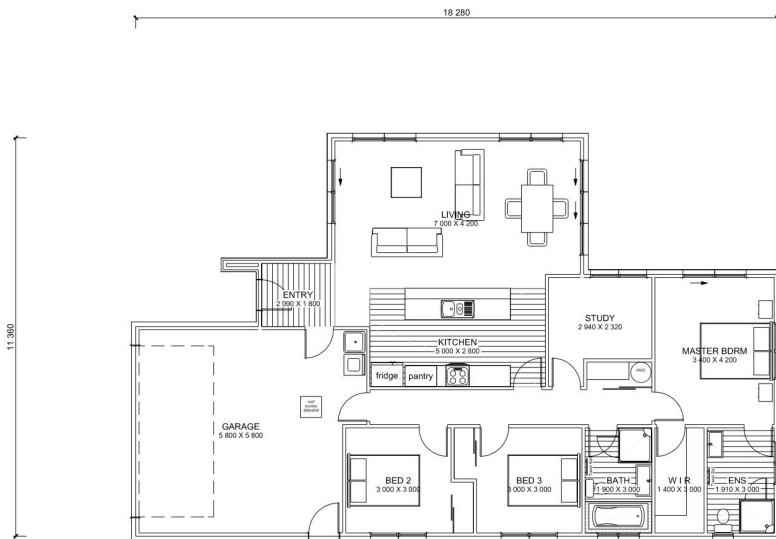




Asking Price \$503,773



Nestled on the fringes of South Rolleston, Olivefields stands out as not just an ordinary place to live, but a thoughtfully planned, personalised and sustainable-living sub-division with our goal being to produce healthier, cleaner and more efficient homes.

This home offers 3 double bedrooms plus study, a large open-plan kitchen and living area and an internal access double garage to keep the winter frost at bay.

Call Gary today to begin building your perfect home!

Floor Area 169m²

Land Area 607m²

The design and illustration of this plan has a copyright on it and is the property of Bainbridge Homes and may not be copied or reproduced in whole or part without written consent.

Gary Wilson
021 543 787
gary@bainbridgehomes.co.nz
www.bainbridgehomes.co.nz

