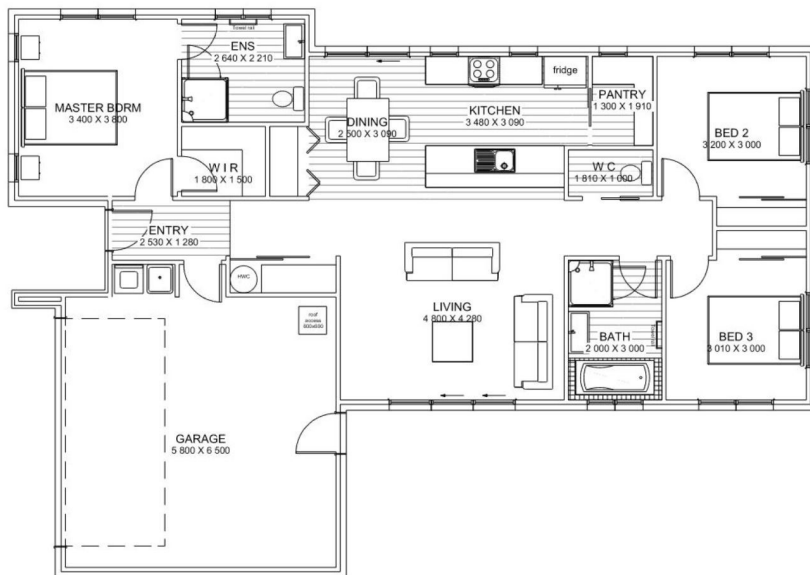




3 2 2

**Asking Price \$497,000**



Welcome to Olivefields, South Rolleston – the newest subdivision in town.

With the developers aiming for a more sustainable and greener living model, and our goal of healthier, cleaner and more efficient homes – we believe this is going to be one of the nicest places to live in Canterbury.

This package is on Lot 15 has the Pebble Beach plan, which sits beautifully on the site. With an area of 160m<sup>2</sup>, this home is designed for nearly everyone.

With a lovely open plan living, kitchen and dining, three bedrooms, two bathrooms and a double garage – who could want for more!

Olivefields, it's the best living – come and talk to us today.

**Floor Area 160m<sup>2</sup>**

**Land Area 576m<sup>2</sup>**

This House and Land price includes house, land, fencing, landscaping, letter box, clothesline, driveways and crossing. The design and illustration of this plan has a copyright on it and is the property of Bainbridge Homes and may not be copied or reproduced in whole or part without written consent.

**Gary Wilson**  
021 543 787  
gary@bainbridgehomes.co.nz  
www.bainbridgehomes.co.nz

