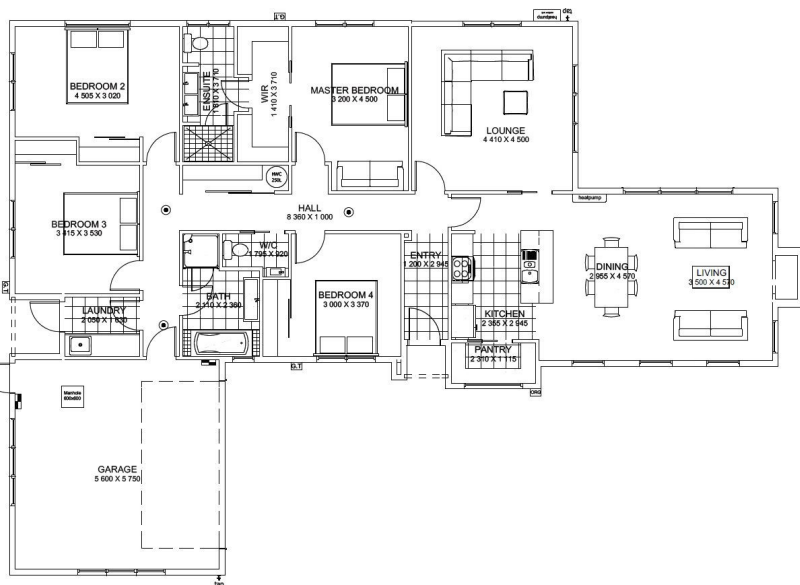




4 2.5 2

Asking Price \$784,000



Floor Area 208m²

Land Area 872m²

Situated on a large 872m² section in the boutique subdivision of Preston's Park, surrounded by other architecturally designed homes, this house offers four double bedrooms, two living areas, and a stunning kitchen which you'll never want to leave.

Built with the peace of mind which comes with the 10 Year Master Build Guarantee, and offering extras galore, this truly is a forever home.

Designed to maximise space and sun, the north facing open plan living, dining and kitchen area forms the centre of the home and offers great indoor/outdoor flow.

Give Gary a call on 021 543 787 to discuss this incredible house and land opportunity, or visit us at 204 Main North Road.

This package price is valid until 30/09/2019 and includes house, land, fencing, driveways and crossing. The design and illustration of this plan has a copyright on it and is the property of Bainbridge Homes and may not be copied or reproduced in whole or part without written consent.

Gary Wilson
021 543 787
gary@bainbridgehomes.co.nz
www.bainbridgehomes.co.nz

