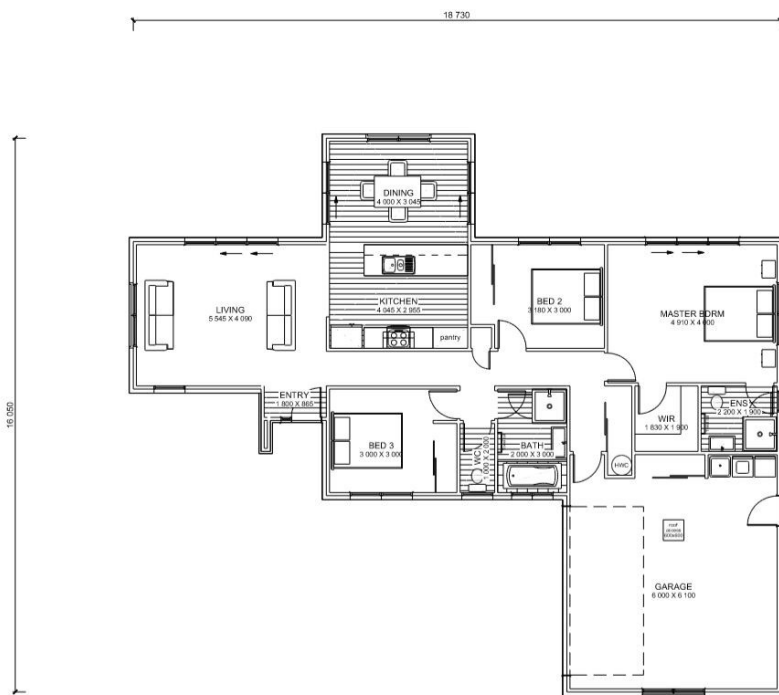




Asking Price \$533,065



Floor Area 179m²

Land Area 628m²

Whether you are a first-time home buyer or looking for something bigger, Olivefields offers you quality and excellent value options.

On this site we have packaged the Spring Hills plan from the First Step by Bainbridge Homes series. This plan is 179m² and maximises the indoor/outdoor flow with sliding doors off the main living area. The kitchen looks out to the dining area, with the living-room to the left of the kitchen.

This package includes house, section, concrete, driveway and driveway crossings, letterbox, clothesline and heating. Don't like the plan? We can swap it for another plan or create a new one from scratch to meet your requirements.

Considering Rolleston? Then consider Olivefields!

Talk to Gary today on 021 543 787.

This House and Land price includes house, land, fencing, landscaping, letter box, clothesline, driveways and crossing. The design and illustration of this plan has a copyright on it and is the property of Bainbridge Homes and may not be copied or reproduced in whole or part without written consent.

Gary Wilson
021 543 787
gary@bainbridgehomes.co.nz
www.bainbridgehomes.co.nz

