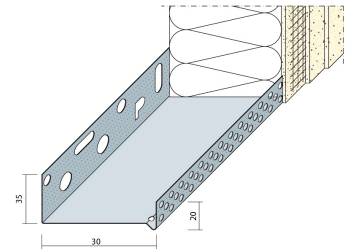


PRODUCT DATA SHEET

Version: 16.02.2017 | 07:13 h

ITEM NO. 90603

| | |
|---------------------------|---|
| Description | Wall base profile 30 mm for thermal insulation system |
| Specification | Box shaped render profile for external wall insulations. 30 mm insulation thickness. |
| Product Group | Plasterprofiles Thermal insulation systems |
| Product Category | Base rails profiles |
| Material | aluminium |
| Material Thickness | 0,6 mm |
| Colour | aluminium |
| Package | 10 piece |
| Length in cm | 250 cm |



The present product sheet shows the current state of development of our products: with the publication of a new version this is no longer valid. Ensure that you always are using the most recent version of this information. Guarantees and liability upon delivery are defined in our general Terms of Business. Please follow the guidelines for use, fitting and siting. All information is subject to change.

Tender documents, fitting instructions and declarations of performance (where legally required) can all be found on our website. For the sake of the environment, please dispose of correctly!

Notes / Particularities:

Installation instructions:

Insert the lower part of the combination with the fastening leg on the upper edge of the insulation panel, which parallels the joint with the joint or the plain bearing in the building body, and apply lightly to the adhesive. A 8 mm thick styrofoam strip with a compliment is applied to the base. Place the base profile on the polystyrene strip and attach to the substrate. After installing the insulation panels, hang the perforated attachment profile. Profile bars. Sub-divisions and perforated attachments are designed for organic and mineral plaster buildings.