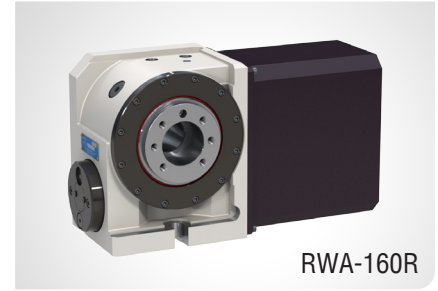


**RN-100 • RWA-160, 200, 250, 320**

COMPACT • MASSIVE CLAMP TORQUE

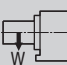


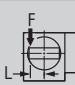
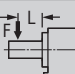
The compact, high speed RN-100 is especially suited for drilling and tapping machines. RWA-Series tables utilize a patent pending dual taper pneumatic clamping system which generates massive clamp torque - up to 300% greater than previous RN-Series rotary tables. RWA-Series tables feature a full range of options including rotary scales and hydraulic or pneumatic rotary joints.



RWA-160R

**Specifications ▶**

Dimensions = mm

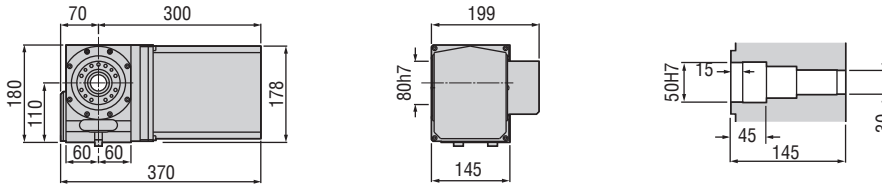
Table Model		RN-100	RWA-160	RWA-200	RWA-250	RWA-250,S	RWA-320	RWA-320,S
Versions available		R, L	R, L	R, L	R, L	R, L	R, L	R, L
Spindle outer diameter	mm	80h7	100h7	120h7	140h7	140h7	180h7	180h7
Table diameter (optional)	mm	(135)	(160, 200)	(200, 250)	250	250	320	320
Center height	mm	110	135	160	160	160	210	210
Center bore	Nose Diameter	mm	50H7	55H7	65H7	80H7	110H7	110H7
	Thru Diameter	mm	30	40	45	50	85	85
Table T-slot width (with face plate)		(10H8)	(12H8)	(12H8)	12H8	12H8	14H7	14H7
Guide block width		14h7	14h7	18h7	18h7	18h7	18h7	18h7
Servo motor (Fanuc)*		Alpha 2i	Alpha 2i	Alpha 4i	Alpha 8i	<b>Alpha 8is</b>	Alpha 8i	<b>Alpha 22is</b>
Maximum motor speed	rpm	5,000	5,000	5,000	4,000	<b>4,000</b>	4,000	<b>4,000</b>
Speed reduction ratio		1/36	1/72	1/72	1/90	<b>1/45</b>	1/120	<b>1/45</b>
Maximum table speed	rpm	83.3@ 3,000	69.4	69.4	44.4	<b>88.9</b>	33.3	<b>88.9</b>
Inertia converted into motor shaft	x 10 <sup>-3</sup> kg·m <sup>2</sup>	.23	.09	.17	.41	.44	.52	1.66
Clamp system		Pneumatic		Pneumatic Dual Taper				
Clamp torque @72psi	Nm (ft. lbs.)	80 (59)	500 (369)	800 (590)	1,000 (737)	1,000 (737)	1,500 (1,106)	1,500 (1,106)
Indexing accuracy	arc sec.	±22.5	±12.5	±10	±10	±10	±10	±10
Repeatability	arc sec.	±2						
Net Weight	kg (lbs.)	28 (62)	38 (84)	61 (134)	80 (176)	80 (176)	145 (319)	145 (319)
Allowable wheel torque	Nm (ft. lbs.)	176 (130)	206 (152)	288 (212)	596 (439)	596 (439)	939 (692)	939 (692)
Allowable work inertia	kg·m <sup>2</sup>	.10	.64	1.25	1.95	1.95	4.48	4.48
Allowable work weight	 <b>kg (lbs)</b> [w/ tailstock]	25 (55) [50 (110)]	100 (220) [175 (385)]	125 (275) [250 (550)]	125 (275) [250 (550)]	125 (275) [250 (550)]	175 (385) [375 (825)]	175 (385) [375 (825)]
	 <b>kg (lbs)</b>	50 (110)	200 (440)	250 (550)	250 (550)	250 (550)	350 (770)	350 (770)
Allowable load when table clamped	 <b>N (lbf)</b>	5,880 (1,317)	10,800 (2,419)	14,400 (3,226)	14,400 (3,226)	14,400 (3,226)	24,800 (5,555)	24,800 (5,555)
	 <b>Nm (ft. lbs.)</b>	80 (59)	500 (369)	800 (590)	1,000 (737)	1,000 (737)	1,500 (1,106)	1,500 (1,106)
	 <b>Nm (ft. lbs.)</b>	156 (115)	780 (575)	1,900 (1,400)	1,900 (1,400)	1,900 (1,400)	4,700 (3,464)	4,700 (3,464)

\* Other motors & RPM available  
Specifications subject to change without notice

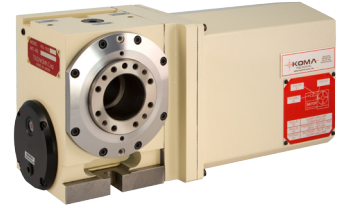
## Dimensions ▶

Drawings not to scale • Dimensions = mm

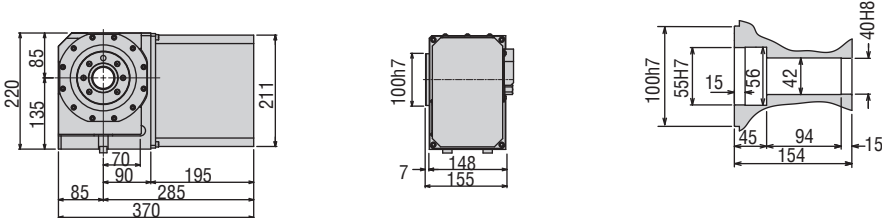
### RN-100R



### ● RN-100R

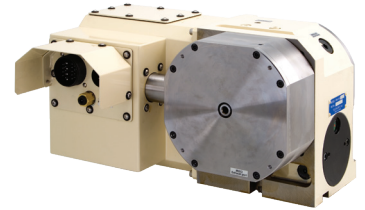


### RWA-160R

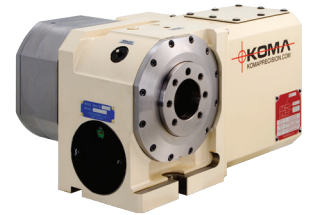
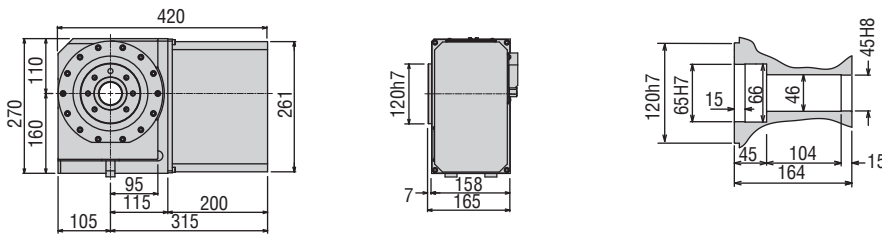


### ● RWA-160R

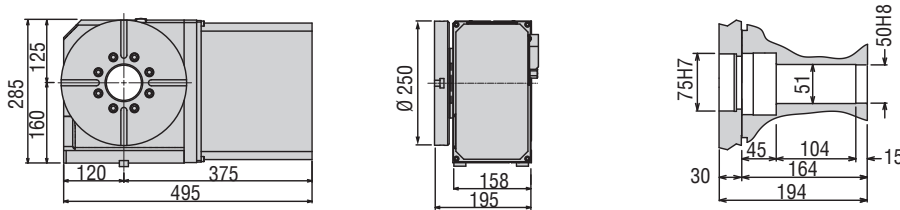
With optional rotary scale



### RWA-200R



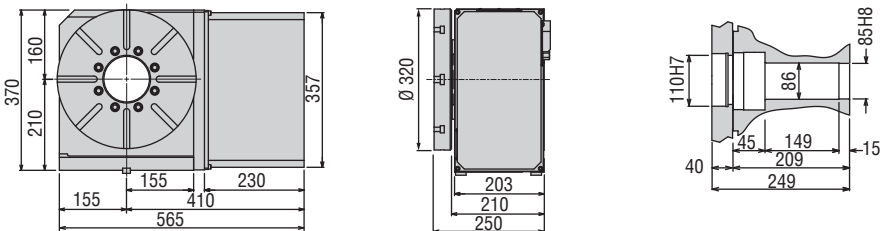
### RWA-250R



### Options & Accessories

TPC NC Controller	p.66
Chucks	p.77
Tailstock	p.79
Support Spindle	p.79
Face Plate	p.81
Encoder / Scale	p.82
Pull Stud Device	p.83
Rotary Joint	p.83
PVC or Steel Cables	p.84

### RWA-320R



The dimensions above are for tables with a FANUC servo motor. Other motors available (dimensions may increase).

## Clamping Block and Bolt ▶

Dimensions = mm

	Type	Q'ty	T-Slot Width	A	B	C	D	E	F	G	H	I	J	K	L	M
RN-100	-	2	14	-	-	-	-	-	-	-	17	8	55	-	23	12
RWA-160	-	2	14	-	-	-	-	-	-	-	17	8	60	-	23	12
RWA-200	-	2	18	-	-	-	-	-	-	-	21	11	65	-	28	16
RWA-250	I	4	18	25	12	80	12	33	35	22	21	11	65	40	28	16
RWA-320	I	4	18	30	15	90	16	31	43	25	21	11	70	46	28	16

Note 1: When using a machine with a T-slot pitch other than the above, use suitable clamping blocks and bolts that are available on the market, or order custom-made ones from KOMA (opt.)

Note 2: Clamping blocks are not included in RN-100, RWA-160 and RWA-200.

### Type I

