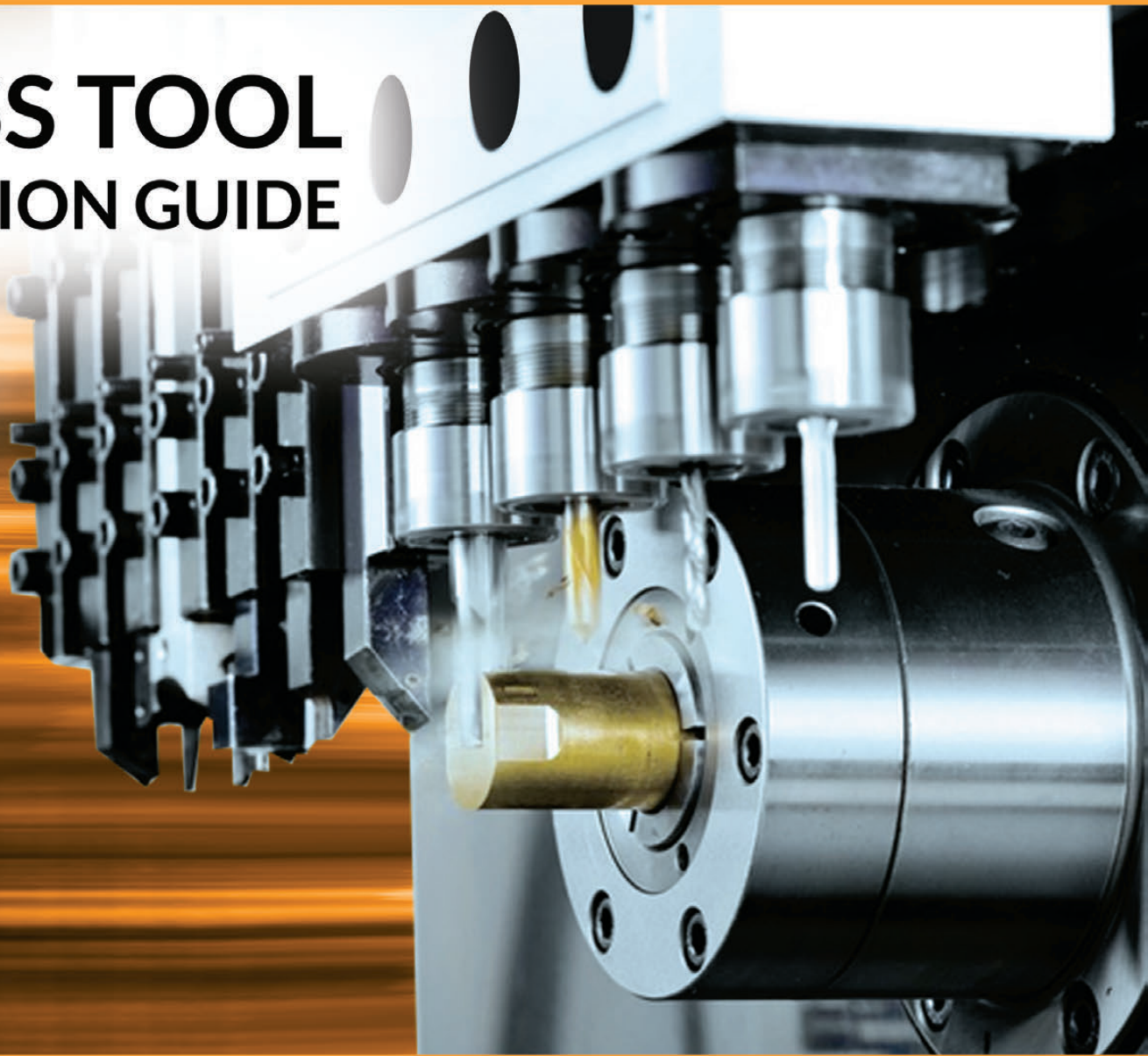


KOMA

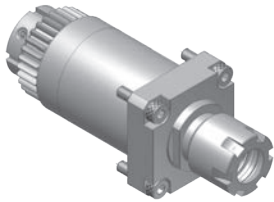
SWISS TOOL SELECTION GUIDE



Swistek[®]
HYBRID Type - Swiss CNC Lathes

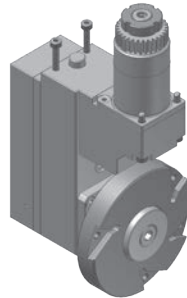
SWISTEK SWISS TOOLING

JSL20RB/JSL20RBY TOOLING FOR GANG TOOL POST (SHANK : Ø34mm)



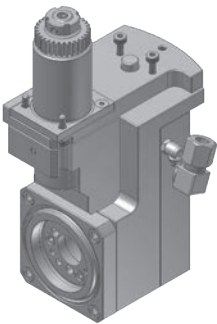
JSR161000
Cross drilling/milling unit

RATIO 1:1
RPM(MAX) 8000
TOOL CLAMPING ER16M



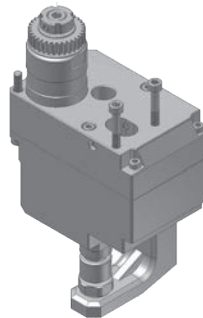
JSR150100
Polygon unit

RATIO 1:1
RPM(MAX) 3000
CUTTER OD(MAX) Ø95mm



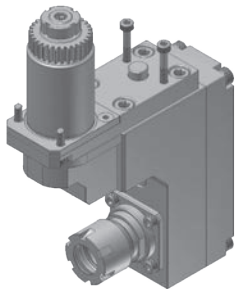
JSR260100
Thread whirling unit

RATIO 1:1
RPM(MAX) 6000
THREAD(MAX) M12
HELIX ANGLE ±15°



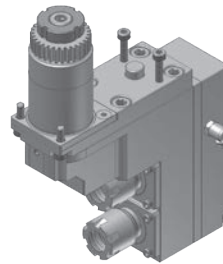
JSR301000
Slotting unit

RATIO 1:0.374
RPM(MAX) 4000
SAW OD(MAX) Ø70mm
SAW ARBOR SHANK Ø12.7mm



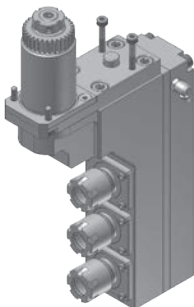
JSR442100
1 spindle drilling/milling unit

RATIO 1:1
RPM(MAX) 6000
TOOL CLAMPING ER20M



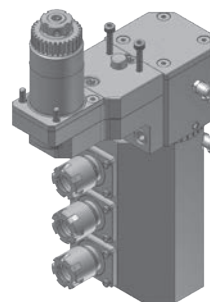
JSR446200
2 spindle drilling/milling unit

RATIO 1:1
RPM(MAX) 6000
TOOL CLAMPING ER16M



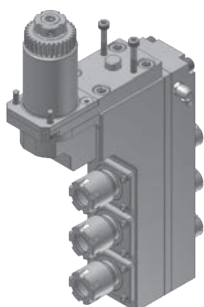
JSR446300-1
3 spindle drilling/milling unit

RATIO 1:1
RPM(MAX) 6000
TOOL CLAMPING ER16M



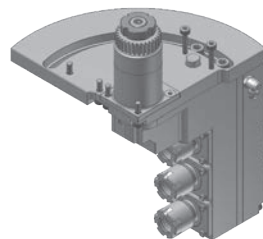
JSR496300-2
3 spindle drilling/milling unit

RATIO 1:1
RPM(MAX) 6000
TOOL CLAMPING ER16M
ANGLE ADJUSTMENT ±180°



JSR546300-1
3 spindle drilling/milling unit

RATIO 1:1
RPM(MAX) 6000
TOOL CLAMPING
Front side : ER16M
Back side : ER11M

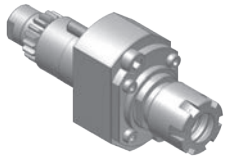


JSR596300-1
3 spindle drilling/milling unit

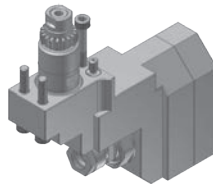
RATIO 1:1
RPM(MAX) 6000
TOOL CLAMPING
Front side : ER16M
Back side : ER11M
ANGLE ADJUSTMENT 0~90°

SWISTEK SWISS TOOLING

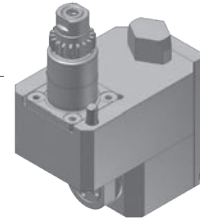
JSL20RB/JSL20RBY TOOLING FOR BACK TOOL POST (SHANK Ø22mm)



JSR761000
Drilling/milling unit
RATIO 1:1
RPM(MAX) 6000
TOOL CLAMPING ER16M

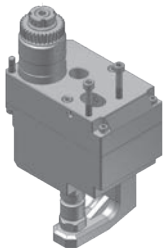


JSR731100
Slotting unit
RATIO 1:0.55
RPM(MAX) 4000
TOOL CLAMPING ER11A
CENTER ADJUSTMENT ±1mm

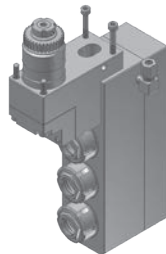


JSR861100
Cross drilling/milling unit
RATIO 1:1
RPM(MAX) 6000
TOOL CLAMPING ER11

JSL26AB/JSL32AB/JSL42AB TOOLING FOR GANG TOOL POST (SHANK : Ø36mm)



JSL301000
Slotting unit
RATIO 1:0.36
RPM(MAX) 3000
SAW OD(MAX) Ø70mm
SAW ARBOR SHANK Ø12.7mm

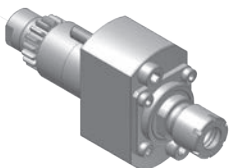


JSL523000
3 spindle drilling/milling unit
RATIO 1:1
RPM(MAX) 6000
TOOL CLAMPING
Front side : ER20
Back side : ER11M

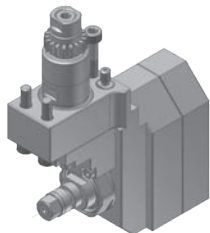


JSL806000
Thread whirling unit
RATIO 1:1
RPM(MAX) 6000
THREAD(MAX) M12
HELIX ANGLE ±15°

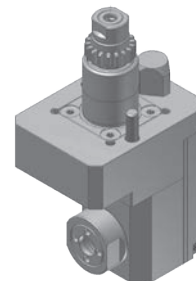
TOOLING FOR BACK TOOL POST (SHANK Ø22mm)



STR711000
Drilling/milling unit
RATIO 1:1
RPM(MAX) 6000
TOOL CLAMPING ER11M
STAR ITEM NO. 541-61



STR731000
Slotting unit
RATIO 1:0.55
RPM(MAX) 4000
SAW OD(MAX) Ø50
SAW ARBOR SHANK
Ø5.0/6.0/8.0/12.7/13.0mm



**STR811000-10J/
STR811000-20R**
Cross drilling/milling unit
RATIO 1:1
RPM(MAX) 6000
TOOL CLAMPING ER11

Tel: 1.800.249.5662
Fax: 860.623.4132

info@komaprecision.com
www.komaprecision.com

20 Thompson Road
East Windsor, CT 06088

