

# KOMPA



***UNIKO***

## FEATURES

### UNIKO CONSTRUCTION

Thermally stabilized steel structure

Tempered steel, high precision sleeve with reference notch

Dimensions= 44: 1,080mm L x 626mm D x 950mm H

45: 1,080mm L x 626mm D x 1,050mm H

46: 1,080mm L x 626mm D x 1,150mm H

Weight= 44: 136Kg (299 lbs.) / 45: 142Kg (313 lbs.) / 46: 148Kg (326 lbs.)

### AXIS MOVEMENT

X Axis (Diameter) = 400mm / 15.75in

Z Axis = 44: 400mm (15.7 in.) / 45: 500mm (19.6 in.) / 46: 600mm (23.6 in.)

Resolution X & Z Axis - 1 µm

Mechanical axis lock

### SPINDLE

Interchangeable tool sleeve

Manual tool sleeve rotation brake

Fine micrometric adjustments

Glass optical scales, SP class precision linear guides

Concentricity - 2 µm

Maximum tool weight 40kg / 88 lbs.

### OPERATING SYSTEM

Vertical 19" Monitor

CVS Smart, user friendly, multilingual software

Windows Operating System with data back-up system

Storage of up to 200 machine origins and 40,000 tools

4 port USB hub

1 Network LAN port

### CAPABILITIES

Measure - Line

Measure - Angle

Measure - Radius

Measure - Protractor

Measure - Tool Profile

Measure - Set Radius

Measurements of GHOST, multitool & angular heads available with optional Tool Pack software

### VISION SYSTEM

HD Camera

40x Magnification

5 x 5 field of view

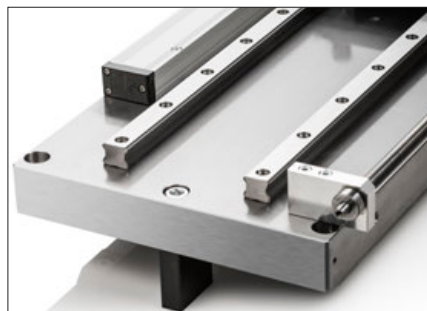
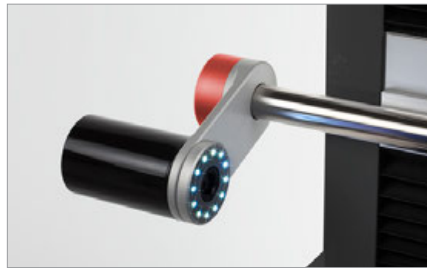
### OPTIONS

Cool light LED ring illuminator

Label printer

Presetter support table C231

Tool Pack additional software package



### USER-FRIENDLY INTERFACE

Entering the world of tool presetting is made easy with the Uniko. Fully equipped and easy to use, the Uniko offers a user-friendly intuitive interface, allowing for easy setting of tools and inspection. Easily check tool geometry using one of the auto-measuring functions, and quickly send tool offsets direct to CNC controls using the post-processor.

### CONSTANT GEOMETRY TECHNOLOGY

Material choice is at the heart of Constant Geometry Technology. Using only like materials with an identical thermal expansion coefficient, we can guarantee constant presetter geometry in all working conditions.

### ERGONOMICALLY DESIGNED CONTROLS

With the operator in mind, the Uniko presetter was designed with an ergonomic micrometric hand wheel allowing for easy fine adjustment of the presetter's optics. A "zero gravity" support column allows smooth, effortless movement of the camera optics in both X and Z. Easy to use interchangeable tool pots allows the presetter to be quickly switched to accommodate any type of tooling.

### SOFTWARE

Simple and intuitive, the CVS Smart software is easy to use. All functions are easy to find and shown using simple, graphical icons. It has never been easier or faster to set your tooling. Create tool lists and generate tool offsets in minutes with the CVS Smart software.

### OVERSIZED HD DISPLAY

Easy to use software combined with a 19" monitor provides the operator with full control. Easily select any of the presettors measuring options with one click while still viewing the edge of the cutting tool.

### SLIDEWAYS / OPTICAL SCALES

The Uniko is built with dual SP Precision guides and preloaded recirculating bearings mounted to a stabilized steel base ground to 2 microns of planarity. 1-micron glass optical scales are used to ensure the highest accuracy of tool measurements.

# ***UNIKO***





Tel: 1.800.249.5662  
Fax: 860.623.4132

info@komaprecision.com  
www.komaprecision.com

20 Thompson Road  
East Windsor, CT 06088

