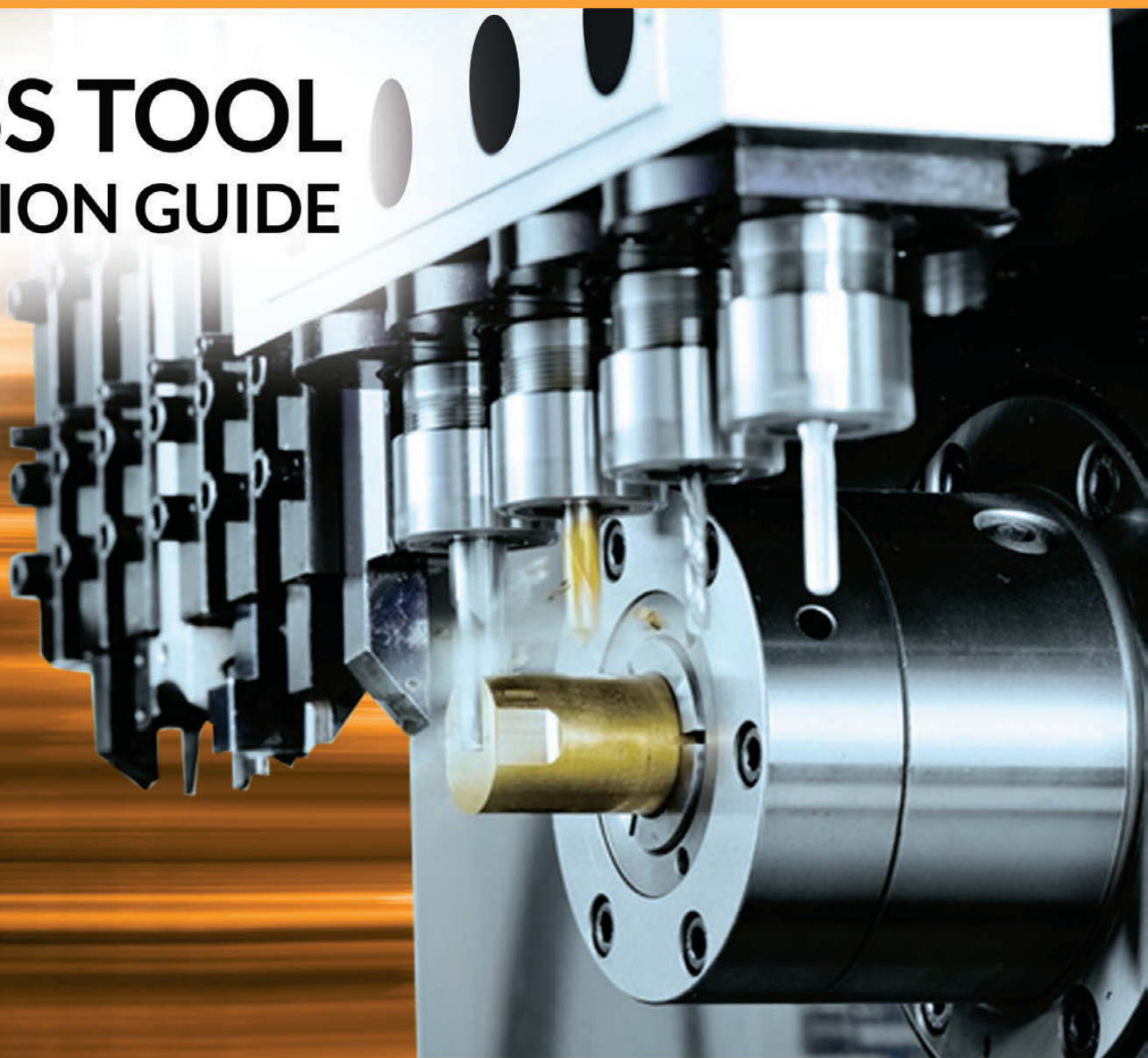


# KOMMA

## SWISS TOOL SELECTION GUIDE



**CITIZEN**

# ABOUT

## KOMA PRECISION

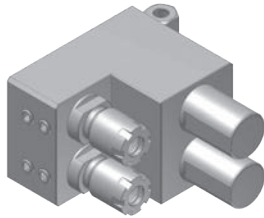
For over thirty years Koma Precision has been the foremost source for the finest the world has to offer in machine tool Productivity Innovation.

With over 30,000 rotary table installations, Koma is the largest distributor of Tsudakoma NC rotary tables and indexers in the world. With over 12,000 angle heads and live tools installed, Koma is the world's largest supplier for Alberti - the originator and the foremost innovator of productivity tooling.



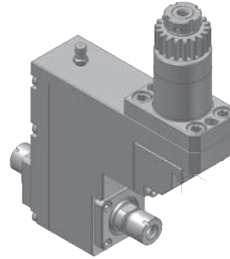
# CITIZEN SWISS TOOLING

## A20VII TOOLING FOR GANG TOOL POST



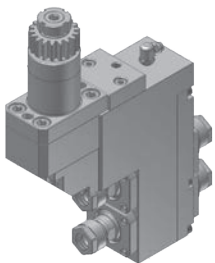
**CTA162000**  
2 tool deep hole drill holder

TOOL SHANK Ø25.4mm  
TOOL CLAMPING ER16M  
DRILLING DEPTH(MAX) 95mm  
MACHINE A20/A32



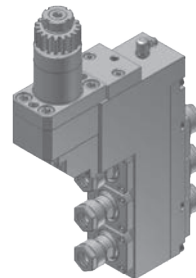
**CTA511000**  
1 spindle drilling/milling unit

RATIO 1 : 1  
RPM(MAX) 6000  
TOOL CLAMPING ER11M  
CITIZEN ITEM NO. BSE1007



**CTA541200**  
2 spindle drilling/milling unit

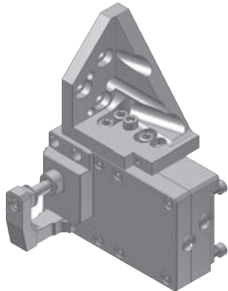
RATIO 1 : 1  
RPM(MAX) 6000  
TOOL CLAMPING ER11A  
CITIZEN ITEM NO. BSE2007



**CTA541300**  
3 spindle drilling/milling unit

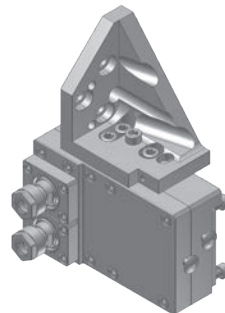
RATIO 1 : 1  
RPM(MAX) 6000  
TOOL CLAMPING:  
Front Side: ER16  
Back Side: ER11A  
CITIZEN ITEM NO. BSE507

## B12 TOOLING FOR GANG TOOL POST



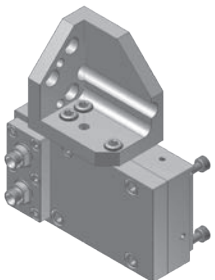
**CTB801000**  
Gear hobbing unit

RATIO 2 : 1  
RPM(MAX) 7000  
CUTTER OD(MAX) Ø30.0mm  
CUTTER SHANK Ø8.0mm



**CTB812000**  
2 spindle cross drilling/milling unit

RATIO 2 : 1  
RPM(MAX) 7000  
TOOL CLAMPING ER11A



**CTB882000**  
2 spindle cross drilling/milling unit

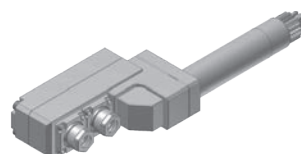
RATIO 2 : 1  
RPM(MAX) 7000  
TOOL CLAMPING ER8  
CITIZEN ITEM NO. B12431B

## C16/M12/M16 TOOLING FOR GANG TOOL POST



**CTC161100**  
Cross drilling/milling unit

RATIO 1 : 1  
RPM(MAX) 8000  
TOOL CLAMPING ER11A  
CITIZEN ITEM NO. GSC607

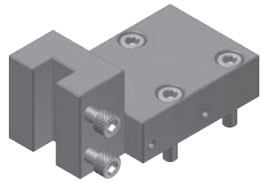


**CTC441200**  
2 spindle drilling/milling unit

RATIO 1 : 1  
RPM(MAX) 6000  
TOOL CLAMPING ER11A

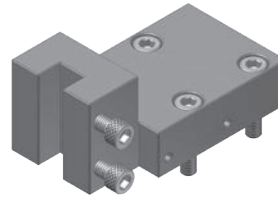
# CITIZEN SWISS TOOLING

## M16 TOOLING FOR TURRET TOOL POST



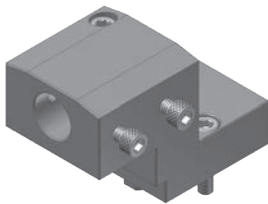
**CTM1601101100**  
Turning bite holder

BITE HOLDER SHANK 10x10mm  
CITIZEN ITEM NO. VTF110



**CTM1602101100**  
Turning bite holder

BITE HOLDER SHANK  
10x10mm  
CITIZEN ITEM NO. VTF1310



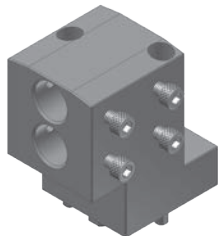
**CTM1603192100**  
1 tool boring bar holder

BORING BAR SHANK  
Ø19.05mm  
CITIZEN ITEM NO. VDF201



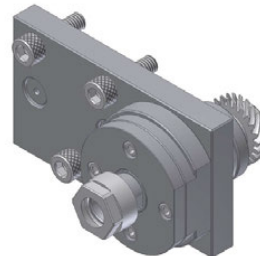
**CTM1603192100-1**  
1 tool boring bar holder

BORING BAR SHANK  
Ø19.05mm  
CITIZEN ITEM NO. VDF501



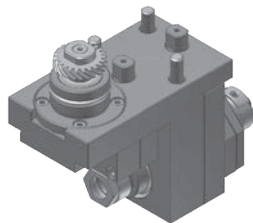
**CTM1603192200**  
2 tool boring bar holder

BORING BAR SHANK  
Ø19.05mm  
CITIZEN ITEM NO. VDF401



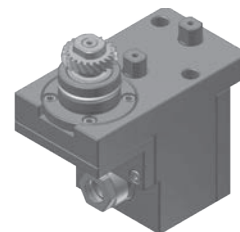
**CTM1605111100-1**  
Cross drilling/milling unit

RATIO: 1/1  
RPM: 6,000  
TOOL CLAMPING: ER11A  
MACHINE: M12/M16  
CITIZEN ITEM NO. MSC107BT



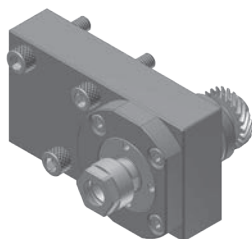
**CTM1603112100**  
1 spindle drilling/milling unit

RATIO 1 : 1  
RPM(MAX) 6000  
TOOL CLAMPING ER11A  
CITIZEN ITEM NO. MST306



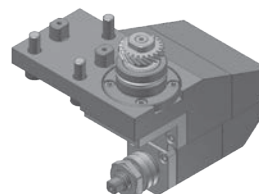
**CTM1604112100**  
1 spindle drilling/milling unit

RATIO 1 : 1  
RPM(MAX) 6000  
TOOL CLAMPING ER11A  
CITIZEN ITEM NO. MSE106



**CTM1605111100**  
Cross drilling/milling unit

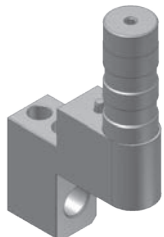
RATIO 1 : 1  
RPM(MAX) 6000  
TOOL CLAMPING ER11A  
CITIZEN ITEM NO. MSC106



**CTM1606122100**  
Slotting unit

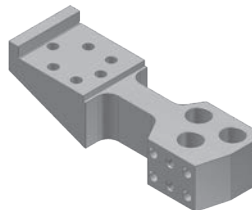
RATIO 1 : 1  
RPM(MAX) 4000  
SAW OD(MAX) Ø45mm  
SA ARBOR SHANK Ø12.7mm  
CITIZEN ITEM NO. MSS345

# L16/L20 TOOLING FOR GANG TOOL POST



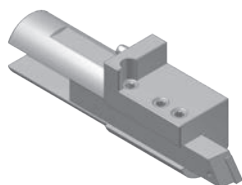
**CTL101190 / CTL101191**  
1 tool sleeve holder

TOOL SHANK Ø32mm  
DRILL SLEEVE SHANK  
CTL101190 : Ø19.05mm  
CTL101191 : Ø20.0mm  
CITIZEN ITEM NO. GDF506



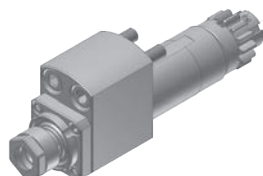
**CTL103001**  
3 tool sleeve holder

DRILL SLEEVE SHANK Ø19.05mm  
CITIZEN ITEM NO. GDF607



**CTL2012100**  
Turning tool holder

TOOL SHANK Ø32mm  
BITE HOLDER SHANK 12x12mm



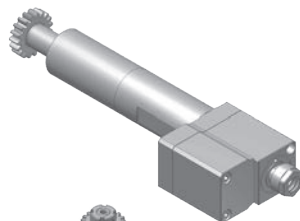
**CTL111000**  
Cross drilling/milling unit

RATIO 1 : 1  
RPM(MAX) 6000  
TOOL CLAMPING ER11A  
CITIZEN ITEM NO. GSC907



**CTL161000**  
Cross drilling/milling unit

RATIO 1 : 1  
RPM(MAX) 8000  
TOOL CLAMPING ER16A  
CITIZEN ITEM NO. GSC510



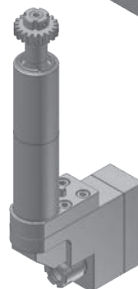
**CTL161100**  
Cross drilling/milling unit

RATIO 1 : 3  
RPM(MAX) 15000  
TOOL CLAMPING ER11A  
CITIZEN ITEM NO. GSC510-3X



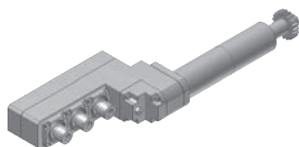
**CTL411000**  
1 spindle drilling/milling unit

RATIO 1 : 1  
RPM(MAX) 6000  
TOOL CLAMPING ER11M  
CITIZEN ITEM NO. GSE107



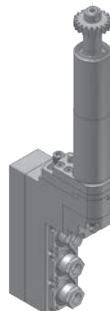
**CTL461000**  
1 spindle drilling/milling unit

RATIO 1 : 1  
RPM(MAX) 6000  
TOOL CLAMPING ER16M



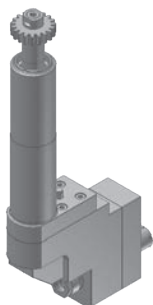
**CTL441300**  
3 spindle drilling/milling unit

RATIO 1 : 1  
RPM(MAX) 8000  
TOOL CLAMPING ER11M



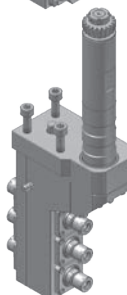
**CTL491300**  
3 spindle drilling/milling unit

RATIO 1 : 1  
RPM(MAX) 6000  
TOOL CLAMPING ER11A  
ANGLE ADJUSTMENT ±15°  
CITIZEN ITEM NO. GSA107



**CTL511000**  
1 spindle drilling/milling unit

RATIO 1 : 1  
RPM(MAX) 6000  
TOOL CLAMPING  
Front side : ER11A  
Back side : ER11M

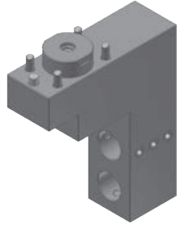


**CTL513000-1**  
3 spindle drilling/milling unit

RATIO 1 : 1  
RPM(MAX) 5000  
TOOL CLAMPING ER11M  
CITIZEN ITEM NO. GSE1307

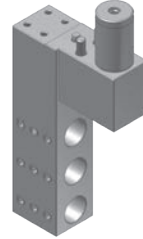
# CITIZEN SWISS TOOLING

## L20E/L20X TOOLING FOR GANG TOOL POST



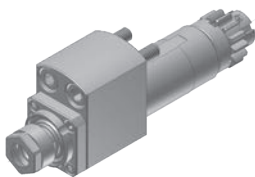
**CTL140200-1**  
2 tool sleeve holder

TOOL SHANK Ø31mm  
DRILL SLEEVE SHANK Ø19.05mm  
CITIZEN ITEM NO. GDF508



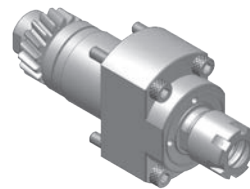
**CTL140300-3**  
3 tool sleeve holder

TOOL SHANK Ø25mm  
DRILL SLEEVE SHANK Ø19.05mm  
CITIZEN ITEM NO. GDF507



**CTL111000**  
Cross drilling/milling unit

RATIO 1 : 1  
RPM(MAX) 6000  
TOOL CLAMPING ER11A  
CITIZEN ITEM NO. GSC907



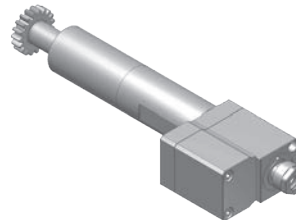
**CTL861000**  
Cross drilling/milling unit

RATIO 1 : 1  
RPM(MAX) 8000  
TOOL CLAMPING ER16M  
CITIZEN ITEM NO. GSC1210



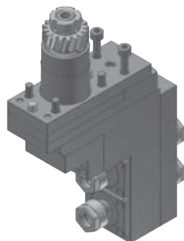
**CTL161000**  
Cross drilling/milling unit

RATIO 1 : 1  
RPM(MAX) 8000  
TOOL CLAMPING ER16A  
CITIZEN ITEM NO. GSC510



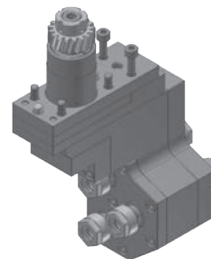
**CTL161100**  
Cross drilling/milling unit

RATIO 1 : 3  
RPM(MAX) 15000  
TOOL CLAMPING ER11A  
CITIZEN ITEM NO. GSC510-3X



**CTL541200**  
2 spindle drilling/milling unit

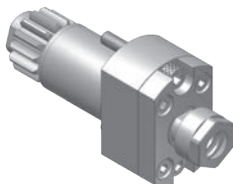
RATIO 1 : 1  
RPM(MAX) 6000  
TOOL CLAMPING ER11A  
CITIZEN ITEM NO. GSE3107



**CTL541300-2**  
3 spindle drilling/milling unit

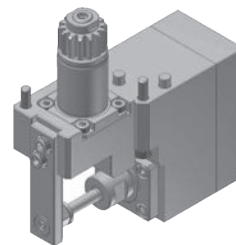
RATIO 1 : 1  
RPM(MAX) 6000  
TOOL CLAMPING ER11A  
CITIZEN ITEM NO. GSE3207

## L20E/L20X TOOLING FOR BACK TOOL POST



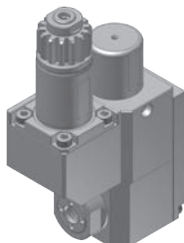
**CTL711000**  
Drilling/milling unit

RATIO 1 : 1  
RPM(MAX) 8000  
TOOL CLAMPING ER11A  
CITIZEN ITEM NO. GSE3507



**CTL731000**  
Slotting unit

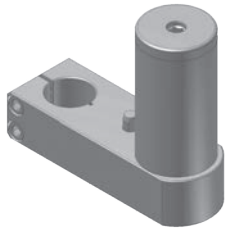
RATIO 1 : 1  
RPM(MAX) 4000  
SAW OD(MAX) Ø35mm  
SAW ARBOR SHANK Ø6.0mm  
CITIZEN ITEM NO. GSS1330



**CTL761100E**  
Cross drilling/milling unit

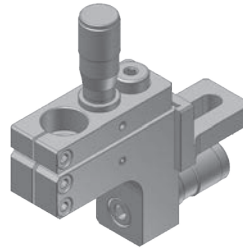
RATIO 1 : 1  
RPM(MAX) 6000  
TOOL CLAMPING ER11  
MACHINE L20E  
CITIZEN ITEM NO. GSS1330

## L20/L32 AIR TOOL AIR TOOL HOLDER



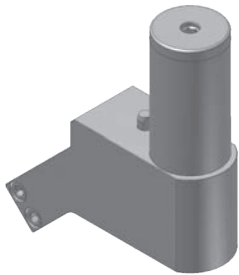
**CTL401000**  
Air tool holder

TOOL SHANK Ø32.0mm  
AIR TOOL SHANK  
Ø19.05/20.0mm



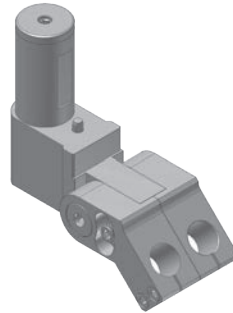
**CTL601000**  
Air tool holder

TOOL SHANK  
Ø19.05/20.0/25.4mm  
AIR TOOL SHANK  
Ø19.05/20.0mm



**CTL4014500**  
Air tool holder

TOOL SHANK Ø32.0mm  
AIR TOOL SHANK Ø19.05mm  
TILT ANGLE 45°  
MACHINE L32



**CTL4101200**  
Air tool holder

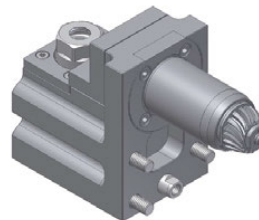
TOOL SHANK Ø32.0mm  
AIR TOOL SHANK Ø12.0mm  
TILT ANGLE 45°  
ANGLE ADJUSTMENT ±20°

M32



**CTM3204161100-1**  
Cross drilling/milling unit

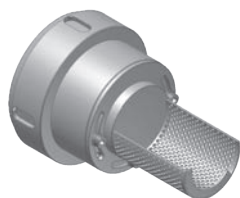
RATIO: 2 : 1  
RPM: 10,000  
TOOL CLAMPING: ER16A  
CITIZEN ITEM NO.: KSC110(2x)



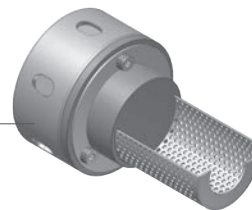
**CTM3204162100**  
Axial for front working

RATIO: 1 : 1  
RPM: 6,000  
TOOL CLAMPING: ER16A  
CITIZEN ITEM NO.: KSE110

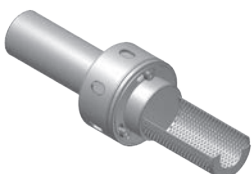
## PART CATCHER



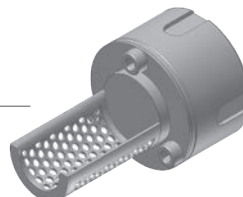
**CTA900000**  
PART CATCHER  
MACHINE / A32



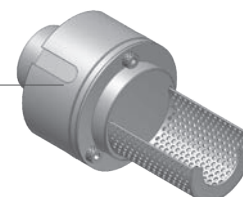
**CTA900000-1**  
PART CATCHER  
MACHINE / A20



**CTL900000**  
PART CATCHER  
MACHINE / L20



**CTC900000**  
PART CATCHER  
MACHINE / C16



**CTE900000**  
PART CATCHER  
MACHINE / L20E

