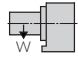


TSUDAKOMA RBS-160 K

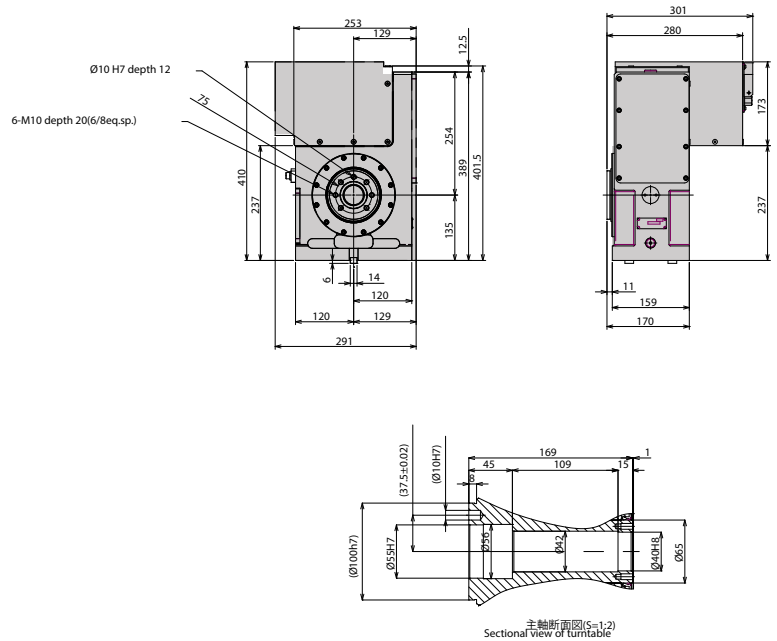
Table Model		RBS-160K	
Spindle outer diameter	mm	100h7	
Table diameter (optional)	mm	(160, 200)	
Center height	mm	135	
Center bore	Nose Diameter	55H7	
	Thru Diameter	40	
Guide block width		14h7	
Servo motor (For Fanuc)*			
Maximum Motor Speed			
Speed reduction ratio		1/36	
Maximum table speed	rpm		
Clamp system		Pneumatic	
Holding torque @72psi	Nm (ft. lbs.)	700 (516)	
Indexing accuracy	arc sec.		
Net Weight	kg (lbs.)	75 (165)	
Allowable work weight [with tailstock]	 kg (lbs)	100 (200) [200 (440)]	

*Other motors & rpm available • Dimensions = mm
Specifications subject to change without notice

Rotary Table Dimensions

Reference Only • Detailed drawings available upon request

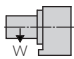

Dimensions = mm



Similar model:
RBS-250K



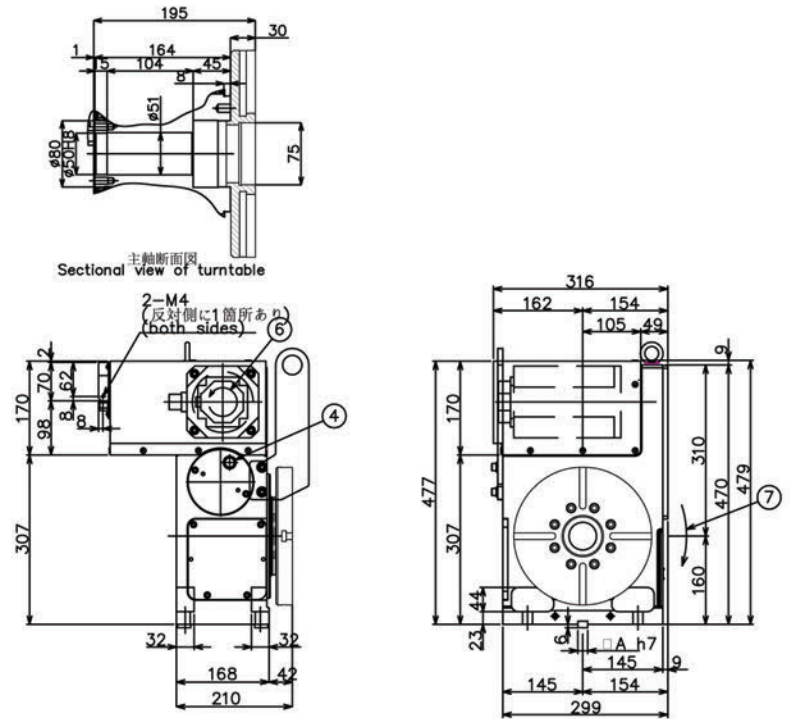
TSUDAKOMA RBS-250 K

Table Model		RBS-250 K	
Spindle outer diameter		140h7	
Table diameter (optional)		250	
Center height		210	
Center bore	Nose Diameter	80H7	
	Thru Diameter	50	
Guide block width		18h7	
Servo motor (For Fanuc)*			
Maximum Motor Speed			
Speed reduction ratio		1/36	
Maximum table speed		rpm	
Clamp system		Pneumatic	
Holding torque @72psi	Nm (ft. lbs.)	1480 (1076)	
Indexing accuracy		arc sec.	
Net Weight		kg (lbs.)	
Allowable work weight		kg (lbs)	125 (275) [250 (550)]
[with tailstock]		kg (lbs)	250 (550)

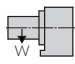

*Other motors & rpm available • Dimensions = mm
Specifications subject to change without notice

Rotary Table Dimensions

Reference Only • Detailed drawings available upon request
Dimensions = mm



TSUDAKOMA RBS-320 K

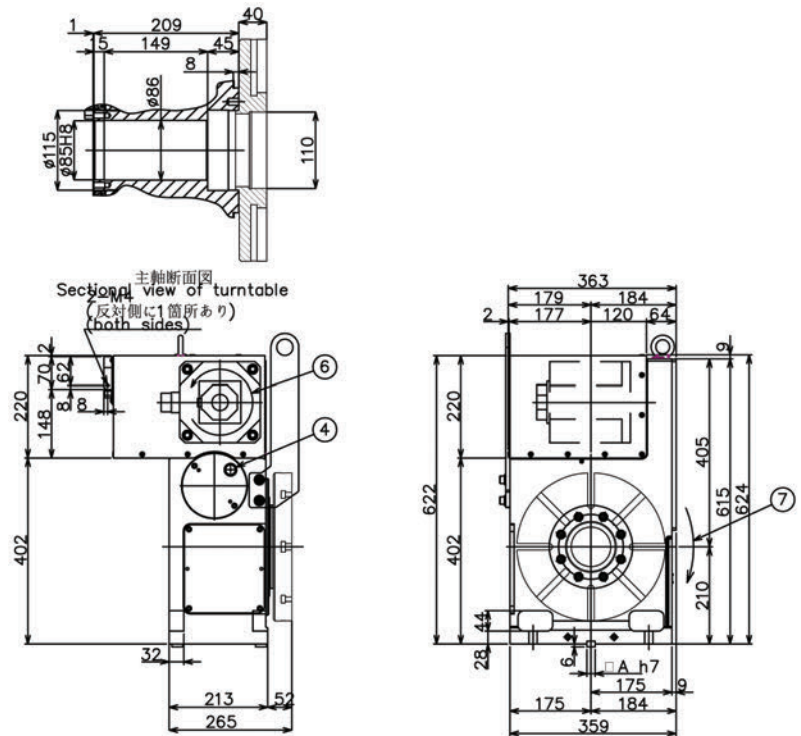
Table Model		RBS-320 K
Spindle outer diameter		180h7
Table diameter (optional)		320
Center height		255
Center bore	Nose Diameter	115H7
	Thru Diameter	85
Guide block width		18h7
Servo motor (For Fanuc)*		
Maximum Motor Speed		
Speed reduction ratio		1/36
Maximum table speed		rpm
Clamp system		Pneumatic
Holding torque @72psi	Nm (ft. lbs.)	2580 (1901)
Indexing accuracy		arc sec.
Net Weight		kg (lbs.) 200 (440)
Allowable work weight		kg (lbs) 175 (385) [350 (770)]
	[with tailstock] 	kg (lbs) 350 (770)

*Other motors & rpm available • Dimensions = mm
Specifications subject to change without notice

Rotary Table Dimensions

Reference Only • Detailed drawings available upon request

Dimensions = mm



Similar model:
RBS-250K

