

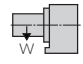
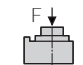
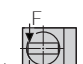

## RNCK-501, 631, 631-BB

### POWERFUL HYDRAULIC CLAMPING

The RNCK-Series rotary tables have been designed for use on horizontal machining centers. These tables are typically pallet mounted for use in high production machining environments.



RNCK-631

Table Model		RNCK-501	RNCK-631	RNCK-631-BB
Table diameter	mm	500	630	630
Center height	mm	310	400	400
Center bore	Nose Diameter	mm	50H7	60H6
	Thru Diameter	mm	50	60
Table T-slot width		18H7	18H7	18H7
Guide block width		18h7	18h7	18h7
Servo motor (Fanuc)*		Alpha 12i	Alpha 12i	Alpha 12i
Maximum motor speed	rpm	4,000	4,000	4,000
Speed reduction ratio		1/180	1/180	1/180
Maximum table speed	rpm	22.2	22.2	22.2
Inertia converted into motor shaft	$\times 10^{-3}\text{kg}\cdot\text{m}^2$	3.09	5.55	5.55
Clamp system**		Hydraulic		
Clamp torque @500psi	Nm (ft. lbs.)	2,450 (1,806)	4,410 (3,250)	4,410 (3,250)
Indexing accuracy	arc sec.	$\pm 7.5$	$\pm 7.5$	$\pm 7.5$
Net Weight	kg (lbs.)	450 (990)	800 (1,760)	800 (1,760)
Allowable wheel torque	Nm (ft. lbs.)	2,450 (1,806)	4,116 (3,033)	4,116 (3,033)
Allowable work inertia	$\text{kg}\cdot\text{m}^2$	18.2	39.7	39.7
Allowable work weight	 $\text{kg (lbs)}$ [w/ tailstock]	250 (550) [600 (1,320)]	400 (880) [800 (1,760)]	400 (880) [800 (1,760)]
Allowable load when table clamped	 $\text{N}$ (lbf)	49,000 (10,976)	49,000 (10,976)	49,000 (10,976)
	 $\text{Nm}$ (ft. lbs.)	2,450 (1,806)	4,410 (3,250)	4,410 (3,250)
	 $\text{Nm}$ (ft. lbs.)	3,430 (2,528)	7,840 (5,778)	7,840 (5,778)

\* Other motors & RPM available

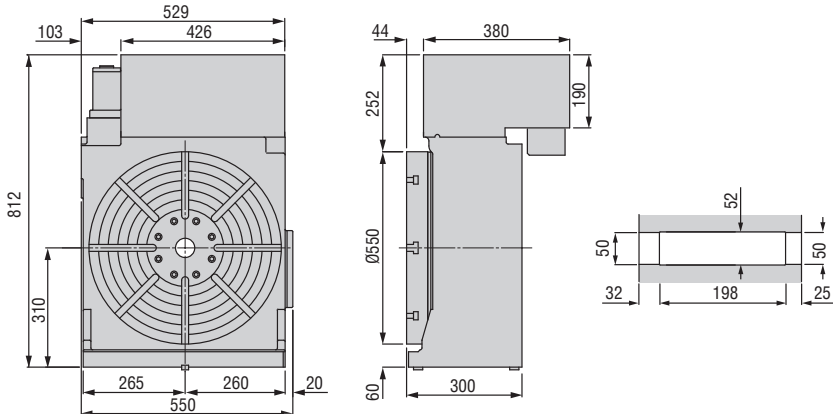
\*\* Booster optional

Specifications subject to change without notice

## Dimensions

Drawings not to scale • Dimensions = mm

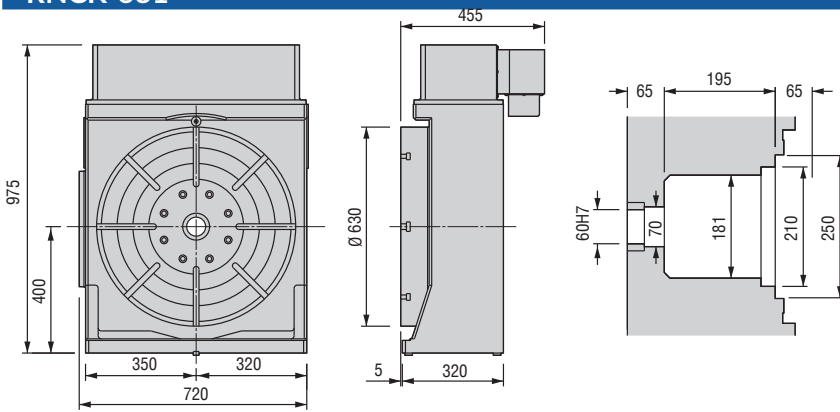
### RNCK-501



### RNCK-631 Optional Swivel Box



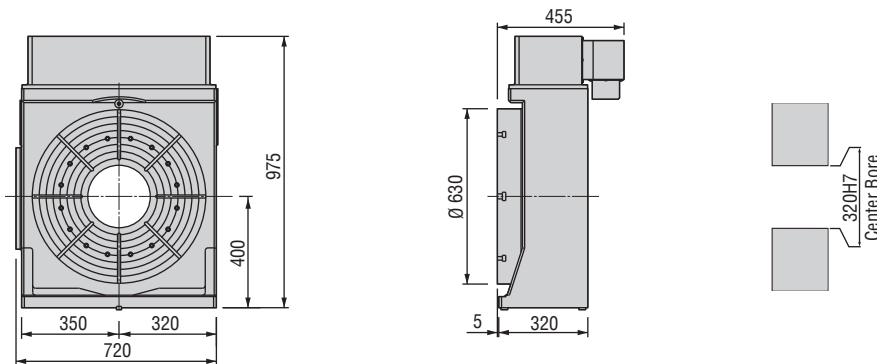
### RNCK-631



### RNCK-631-BB



### RNCK-631-BB



### Options & Accessories

TPC NC Controller	p.68
Chucks	p.79
Tailstock	p.81
Support Spindle	p.81
Face Plate	p.83
Encoder / Scale	p.84
Pull Stud Device	p.85
Rotary Joint	p.85
PVC or Steel Cables	p.86

The dimensions above are for tables with a FANUC servo motor. Other motors available (dimensions may increase).

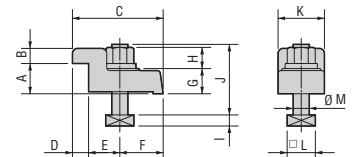
## Clamping Block and Bolt

Dimensions = mm

	Type	Q'ty	T-Slot Width	A	B	C	D	E	F	G	H	I	J	K	L	M
<b>RNCK-501</b>	I	4	18	40	20	109	18	42	50	25	21	11	70	46	28	16
<b>RNCK-631</b>	II	4	18	40	18	63	18	15	30	58	21	11	105	60	28	16
<b>RNCK-631-BB</b>	II	4	18	40	18	63	18	15	30	58	21	11	105	60	28	16

Note: When using a machine with a T-slot pitch other than the above, use suitable clamping blocks and bolts that are available on the market, or order custom-made ones from KOMA (opt.)

### Type I



### Type II

