

KOMMA



HATHOR SIX

HATHOR SIX CONSTRUCTION

Floor Model
 Natural Granite Base & Column
 Stainless Steel Mechanical Elements
 Dimensions 1,240 mm L x 558mm D x 1,840mm H
 Weight 135 Kg / 297 lbs

AXIS MOVEMENT

X Axis (Radial) = 200mm / 7.874 in
NEW Increased Measuring Range Z Axis = 600mm / 23.62 in
 Resolution X & Z Axis - 1 μ m
 Double Pneumatic Axis Clamping
 Manual Rapid & Fine Adjustment Movement

SPINDLE

Interchangeable ISO40 or 50 for Different Tapers
 Optional Interchangeable Holders Available - HSK, VDI, Capto
 Pneumatic Mechanical Brakes with Radial Compensation of Clamping Force
 Concentricity - 2 μ m
 Maximum Tool Weight 40kg / 88 lbs.
 Tool Clamping - Automatic Pull-Stud Recognition

NEW OPERATING SYSTEM

NEW 15" TFT Touch Screen
 INTEL®
 SSD Data Storage
 Connectivity - (2) RS-232 Printer / PC
 LINUX
 Printer Support
 Capable of Storing 9,999 Different Machine Specifications
 Capable of Storing 1M Different Tool Specifications

CAPABILITIES

Measure - Full Screen Auto Targeting
 Measure - X&Z Axis Focusing Control Bar
 Measure - Automatic Radius & Angle Computing Cycle
 Measure - Radius/Diameter, MM/Inches, Absolute/Incremental Modes
 Measure - Analog & Digital Visualization
 Measure - Tool Profile Photograph - Difference Between Cutting Edges
 Optical Autofocus to determine largest and widest X + Z dimensions
 Measure radial and axial runout
 Inspection - 4 Color Tool Inspection



VISION SYSTEM

Telecentric Lens for Accurate Dimensional Measurements / C-MOS Image Sensor with 0.001mm resolution
 Diascopic Illuminator for Greater Contrast and Enhanced Clarity for Geometrical Profiling when Measuring
 Episcopic Illuminator to Best Expose Tool Surfaces for Inspection
 Cutting Edge Inspection for wear and tear
 10.4" Color LCD Display Screen
 30x Magnification | 15" TFT LCD Touch Screen

TD SIX SOFTWARE

Tool List Management / Tool Sets & Post Processor Universal Generator
 CNC Machine Origin Management
 RFID Tool Detection Designed for Systems Like Balluff, etc.
 Free software upgrades



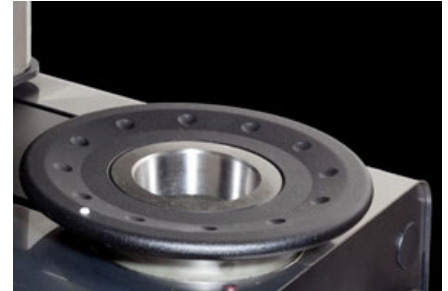
MANUAL AXES MOVEMENT

Axis un-clamping by means of a single pneumatic control system.



ERGONOMICALLY DESIGNED CONTROLS

Ergonomically designed micrometric hand wheels for X and Z axes allows for precise and smooth fixed-target and auto adjustments. The operator can move the axis simultaneously or independently.



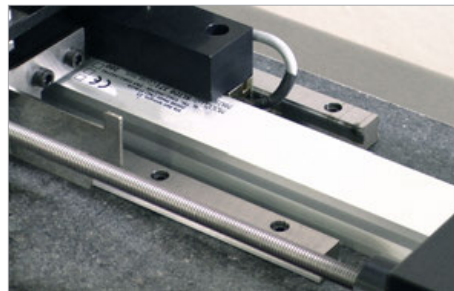
PRECISION SPINDLE SYSTEM

Precision spindle systems are fully interchangeable. The one-piece cartridge eliminates the need for adapters and the errors associated with their use.



NATURAL GRANITE

Our tool presettlers utilize natural granite for the column and base to insure the best thermal stability. This solid base construction, together with excellence in manufacturing, all but eliminates the need for re-alignments and guarantees proper functioning over the life of the unit.



SLIDEWAYS / OPTICAL SCALES

Custom designed optical scales incorporated with a double rail system for the X axis movement with 3 double recirculating ball bearing sliding block grant the highest degree of accuracy. Both X & Z axes have a resolution of 1 μ m.



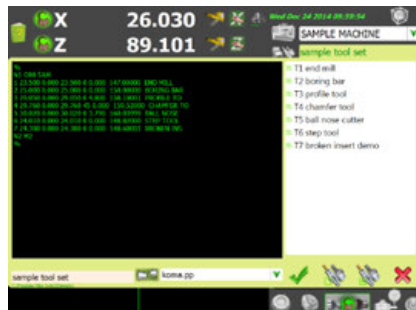
PROPRIETARY VISION SYSTEM

High resolution camera system utilizing our realized technology. The double lit, variable LED arrangement in combination with a C-MOS sensor and telecentric lens produces the most accurate lighting system available.



USER FRIENDLY INTERFACE

ergonomic design combined with a 15" TFT LCD Touch Screen. This system provides full operator control and selection of options and functions via an intuitive icon system allowing operational and functional simplicity that is second to none..



POWERFUL COMPUTING SYSTEM

Tool Data Management

This powerful new operating system utilizing a Linux OS, features state-of-the-art tool measuring, inspection and data management solutions. Koma presettlers increase efficiency, reduce down time and are supported by extensive applications, technical support, and a global service network.



Tel: 1.800.249.5662
Fax: 860.623.4132

info@komaprecision.com
www.komaprecision.com

20 Thompson Road
East Windsor, CT 06088

