

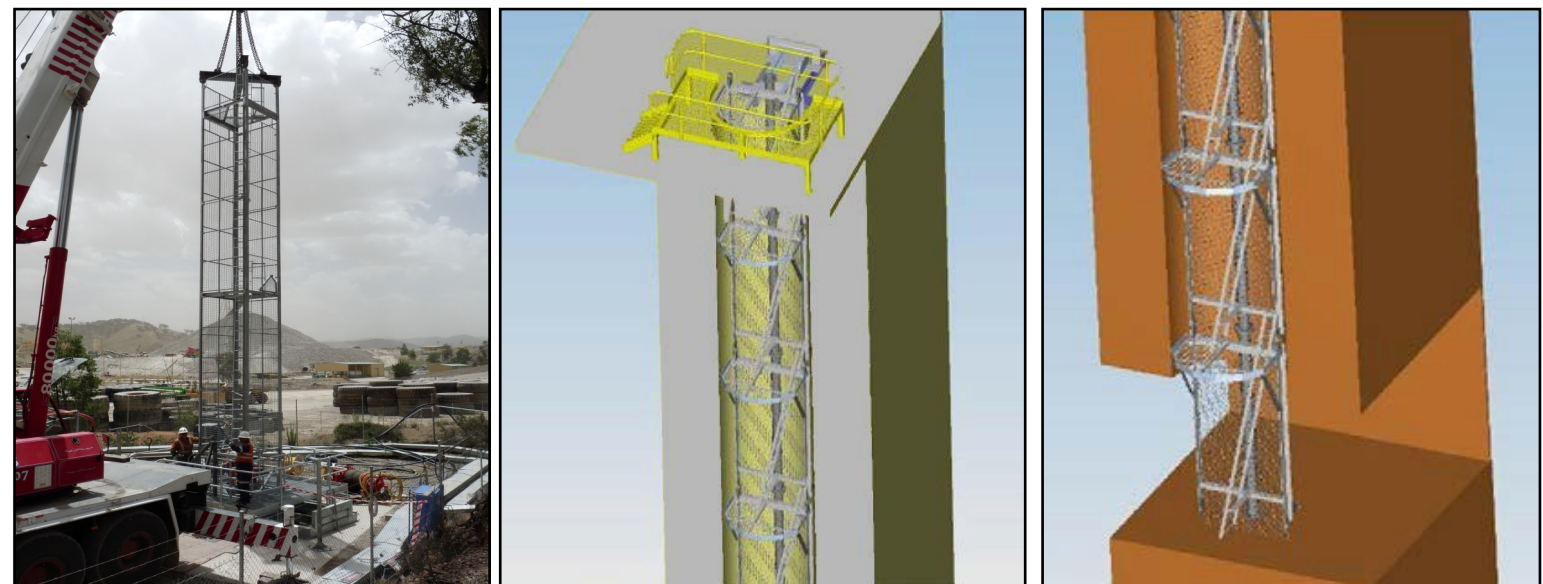
Ladderways



Mancala has developed and refined a ladderway lowering system that ensures a fast and safe non-entry method of installation.

Ladderway Services include:

- Design
- Certification
- Statutory approval
- Fabrication
- Raise boring
- Shaft ground support
- Mancala installation
- Client installation
- Kit form supply



The Mancala Group

Ph: +61 (0) 3 8562 9400

Email: enquiries@mancala.com.au

www.mancala.com.au

Installation Process

All designs are based on the common principle of non-entry installation and full suspension from chairing beams located at the collar of the shaft. The structure need not be secured within the shaft and this has the added advantage that it can be extended or removed and re-used.



Principles:

- The ladderway is custom designed to meet client's needs. Should ground support be required within the escape shaft, it can be installed from temporary platforms attached to the ladderway.
- Manufacture and galvanizing takes place off-site in accordance with Mancala's quality control guidelines.
- The first ladderway module is lowered into the shaft and secured at the collar by chairing beams. The next module is then positioned above the collar and connected to the already chaired module in the new shaft. The entire structure is then lowered until level with the collar. This cycle continues until the installation of all modules is complete.



Standard designs are readily available for:

- Vertical or inclined shafts
- Installation from underground or surface
- Low back/roof heights
- Stretcher and material transport within the shaft
- Concurrent attachment of all service either independent of, or integral to, the ladderway structure
- A leading module work platform allows ground support to be installed during the lowering process



Mancala is committed to comprehensive control and safety guidelines to ensure quality products and processes. All Mancala ladderways are designed by certified structural engineers and manufactured by a quality assured fabricator.

Mancala's expertise is assured with over 25 years' experience installing ladderways, complying with and understanding Australian standards and statutory requirements in all states. This ensures that the design, manufacture and installation process is efficiently and effectively managed to achieve customer satisfaction.

The Mancala Group

- **SAFETY:** Striving to achieve zero harm
- **QUALITY:** Taking pride in what we make and do; on time, on budget and to specification
- **INTEGRITY:** Doing what we say we will do with honesty and respect
- **INNOVATION:** Revolutionising processes and applying technology to achieve better outcomes for all stakeholders
- **PEOPLE:** Recognising people as our greatest asset and encourage personal excellence