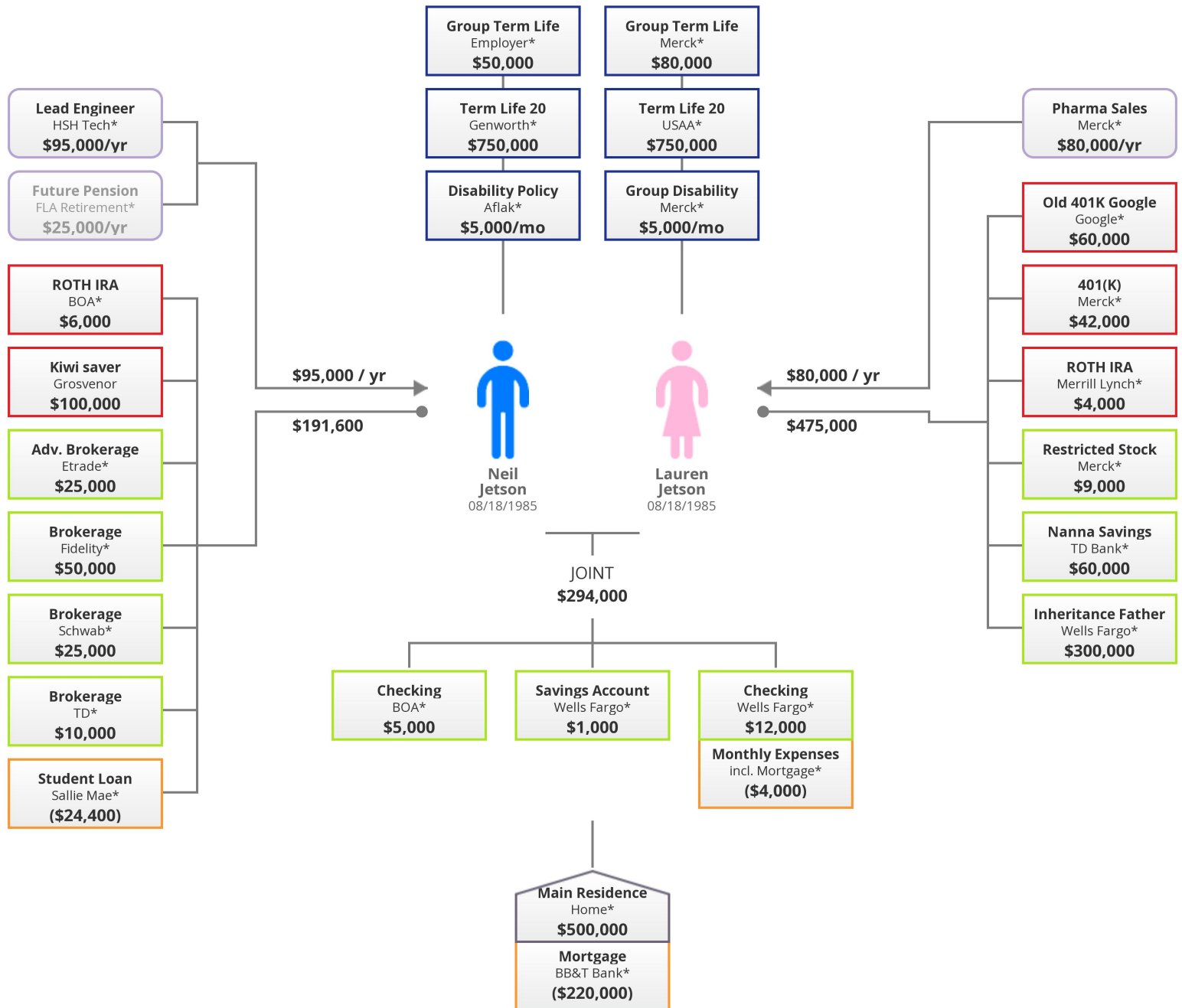


Asset Map

 **Neil Jetson (32)** Primary
  **Lauren Jetson (32)** Spouse
  **Barry Jetson (7)** Dependent
  **Grandma Jetson (61e)** Family
  **CPA Sonny Numbers (41e)** Accountant



 Income
  Residence
  Retirement Asset
  Non-Retirement Asset
  Liability
  Insurance
  Owned By Another
  Deferred Annuity
  Stencil

This data summarizes certain information you have provided to us. Accounts and/or assets marked with a * are not under investment management discretion by The Lubitz Financial Group (LFG). Valuations of certain assets such as real estate or personal property are based on estimates provided by you, or by using publicly available information gathered by LFG. This is not an official record of your assets or any account and/or contract, and it is provided for your convenience and information only. If there is a discrepancy between any of the information herein and the official records of your assets, accounts and/or contracts, the official records will take precedence. LFG makes no representation that the data presented herein, or in any other statement, is accurate. Please verify this data and advise us of any inaccuracies. All Rights Reserved © 2018 - Asset-Map®, LLC