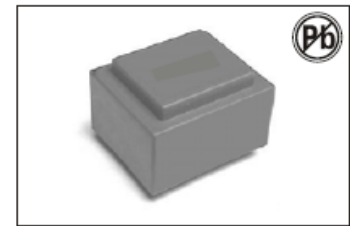


# 50/60HZ PCB MOUNT TRANSFORMERS - EI RANGE 1VA EI 30-10.5-3010 SERIES



## FEATURES:

- Vacuum filling
- Two compartments bobbins
- Self-extinguishing plastics UL 94 VO
- Degree of protection IP 00
- 70 grams weight

## OPTIONS:

- Bulk packaging is standard
- Custom design available

## COMMON APPLICATIONS:

- Medical equipments
- Industrial equipments
- Industrial controls
- Test equipment
- Industrial computers
- Avionics & telecom

## ELECTRICAL CHARACTERISTICS

| PRIMARY VOLTAGE: 230 |                     |                      |                   |                     |           | PRIMARY VOLTAGE: 115 |                     |                      |                   |                     |           |
|----------------------|---------------------|----------------------|-------------------|---------------------|-----------|----------------------|---------------------|----------------------|-------------------|---------------------|-----------|
| Part Number          | Secondary voltage V | Secondary Current mA | No-load voltage V | Ambient Temperature | Rating VA | Part Number          | Secondary voltage V | Secondary Current mA | No-load voltage V | Ambient Temperature | Rating VA |
| FAPE301049           | 6                   | 167                  | 8.6               | T70B                | 1         | FAPE301061           | 6                   | 167                  | 8.6               | T70B                | 1         |
| FAPE301050           | 9                   | 111                  | 12.9              | T70B                | 1         | FAPE301062           | 9                   | 111                  | 12.9              | T70B                | 1         |
| FAPE301051           | 12                  | 83                   | 17.2              | T70B                | 1         | FAPE301063           | 12                  | 83                   | 17.2              | T70B                | 1         |
| FAPE301052           | 15                  | 67                   | 21.6              | T70B                | 1         | FAPE301064           | 15                  | 67                   | 21.6              | T70B                | 1         |
| FAPE301053           | 18                  | 56                   | 25.9              | T70B                | 1         | FAPE301065           | 18                  | 56                   | 25.9              | T70B                | 1         |
| FAPE301054           | 24                  | 42                   | 37.9              | T70B                | 1         | FAPE301066           | 24                  | 42                   | 37.9              | T70B                | 1         |
| FAPE301055           | 2 X 6               | 2 X 83               | 2 X 9             | T70B                | 1         | FAPE301067           | 2 X 6               | 2 X 83               | 2 X 9             | T70B                | 1         |
| FAPE301056           | 2 X 9               | 2 X 56               | 2 X 13            | T70B                | 1         | FAPE301068           | 2 X 9               | 2 X 56               | 2 X 13            | T70B                | 1         |
| FAPE301057           | 2 X 12              | 2 X 42               | 2 X 19            | T70B                | 1         | FAPE301069           | 2 X 12              | 2 X 42               | 2 X 19            | T70B                | 1         |
| FAPE301058           | 2 X 15              | 2 X 33               | 2 X 23.6          | T70B                | 1         | FAPE301070           | 2 X 15              | 2 X 33               | 2 X 23.6          | T70B                | 1         |
| FAPE301059           | 2 X 18              | 2 X 28               | 2 X 25            | T70B                | 1         | FAPE301071           | 2 X 18              | 2 X 28               | 2 X 25            | T70B                | 1         |
| FAPE301060*          | 2 X 24              | 2 X 21               | 2 X 38            | T70B                | 1         | FAPE301072           | 2 X 24              | 2 X 21               | 2 X 38            | T70B                | 1         |

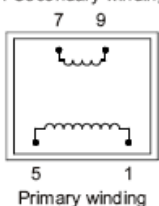
\* To be noted : 2 x 24 V non safety transformer approved, conform to EN 61558-2-6 (Isolating transformer).

## TECHNICAL INFORMATION

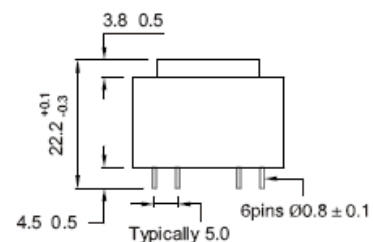
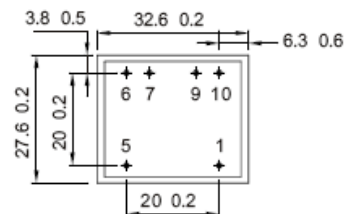
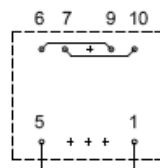
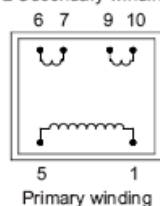
Resin class B CEI 85 (20 000 h testing to CEI 126)  
Inherently short-circuits proof transformer  
30 V and 36 V models are VDE EN 61558-2-6 certified (production on request)  
Insulation voltage 4 KV  
100% tested production  
Certification : CCA procedure on request

## PHYSICAL CHARACTERISTICS

1 Secondary winding



2 Secondary winding



All dimensions in mm

Recommended Drill-hole Diameter for 1.3mm pins