

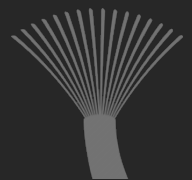
PPVS

ELECTRICAL – FACILITIES MANAGEMENT – IT&AV – SECURITY

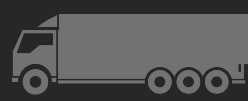


01733 242497

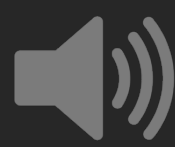
www.ppv.solutions



PPVVS



Complete Facilities Management.





7 Talon Court
Eagle Business Park
Yaxley
Peterborough
PE7 3FW

TEL: 01733 242497 FAX: 01733 245449

www.ppv.solutions

About us

PPVS offer the full package, from general building and property maintenance to all disciplines of security and facilities management.

With over **60 years** combined experience in the building and security industries, **PPVS** can proudly supply most services both **industrial** and **commercial** customers require.

Very few businesses can offer all these specialist trades and still retain the 'family run business feel' with professional attention to detail.

The property management and building services of the business has a wealth of experience within the utilities sector such as **National Grid, Anglia Water, Centrica**. The security side of the business carries out installations for all types of business, with major clients such as **Bakkavor, AB Agri, TC Harrisons Group, Bauer Media, Friars Pride** and **AMEYS, Anglian Water** - just to name a few!

Our approach is to provide **our clients** with a team of people that know how to work together, with the experience and skills required to make the project a success for all involved. It is our aim to always operate in an open and harmonious environment with a 'professional' style approach adopted so that when challenges occur we work together to find the best solution.

All staff within the **PPVS** understands that customer service is absolute key to sustain growth and repeat business going forward in this highly competitive climate. All our staff are very closely linked with regular meetings, internal news within the group and most importantly understanding our "**client's requirements**".

- CCTV / Intruder Alarms / Access Control / Fire / Hi –Tech Security / Manned- Guarding
- Gate Automation
- Painters and Decorators
- Carpentry and Fencing
- Electricians and Plumbers
- Mechanical Engineers
- Steel Fabricators
- Ground-works' and labour
- Bricklayers and Plastering
- General property maintenance
- Commercial building projects
- Industrial Plant Hire
- Facilities Management

CCTV Security and Intruder Alarms

CCTV

CCTV over the years has become a typical accessory certainly in the commercial environment and of late in the domestic market. PPVS are proud to say that their engineers have been installing CCTV systems since 1988 and have witnessed considerable changes since then. CCTV acts as a huge deterrent towards any premises helping against vandalism, intrusion and equally important health and safety in the work place! We have in the past installed CCTV systems which have saved thousands of pounds in bogus health and safety claims from trips and falls, electric shocks and damage to business premises. CCTV systems also increase productivity in the working environment. We also install monitored CCTV systems saving thousands of pounds in man-guarding costs in certain cases. Camera systems now can also be linked to your mobile phone easily, providing you have 3G OR 4G connection/internet, images can be viewed anywhere in the world, handy when your away from home and you would like to check on your premises.

- IP Cameras
- Number plate recognition cameras
- 360° Cameras
- Covert Cameras



Intruder Alarms

PPVS install systems for the domestic or commercial customers. Systems can be linked to our preferred monitoring station East Midlands Central station for key holder response or we can install a speech dialler to call up to four key holders depending on the customer's requirements. We install systems to **BS EN 50131** and **PD6662** to protect any type or size of domestic property, with over 30 years experience we can design systems to suit all requirements. The design and engineering staff at PPVS have an enviable reputation in the industry, we have been installing systems in the East Anglia area for many years also other counties of the country. We have a very broad knowledge at **PPVS** of the majority systems fitted and are happy to take over existing systems.

- Audible Systems
- Remote Monitored by guarding company or police response.
- Wireless or Wired alarms
- Take over of existing systems

PPVS

Fire and Access Control

PPVS have over **60 years combined experience** in the installation of Fire Alarm systems, we have the knowledge to design, supply, install and maintain fire detection systems to the current regulations **BS5839 Part1 2013**. We install a broad range of well known manufacturers such as. We offer a first class service in the East Anglia area, basically within 2 hours' radius of our Peterborough office to ensure we can deliver with ease and offer low travel costs to the customer! We maintain systems every 6 months, we also inform the customer when the service is due and organise the maintenance visit to the current legislations.

Below are the manufactures we use and specialise within:

- Haes systems
- C-Tech
- Menvier
- Honeywell
- Advanced
- Apollo
- Hochiki



Access control systems installed by PPVS are carefully designed to suit the customers' requirements and the premises layout. We design and install systems which use **proximity readers** to gain access through secure areas, **electronic keypads** and **finger print recognition systems** which are becoming more and more popular especially of late as many mobile phone designers have included fingerprint readers within the **latest phone enclosure**. Access control systems are electronic security solutions that are installed to secure buildings and **monitor movement of staff** and **visitors** around the building, not forgetting the most important aspect **safety!** With the latest systems and software, we can limit access to staff and visitors through certain areas of the premises, also during certain times of the day if required.

Below are some of the products we continuously use:

- Biometric readers
- Proximity readers
- Numerical Keypad

Branded equipment we install:

- ACT
- BPT
- BFT
- VIDEX



PPVS

Electrical

At **PPVS** we have over 30 years worth of experience when it comes down to commercial and domestic electrical services. **PPVS** electrical caters for all types of electrical installers either commercial or domestic, all our electrical engineers are qualified to the latest regulations and install to **NICEIC** standards.

Services we can offer:

- NICEIC Periodic inspections and testing.
- Electrical power and lighting design.
- Electrical power and lighting installation.
- Reactive Maintenance.
- Security Lighting.
- LED installation (Commercial / Industrial / Retail).
- LED Signage



Data Installations

- Installing all containment, CAT 5E, CAT 6, Fibre optic and copper cabling, Multi-core telephone, patching, SDSL and ADSL links, Testing and Terminating, also working on live changeovers within HMP / MOD establishments.

IT Department

PPVS can now proudly offer a range of IT services tailored for our clients needs. We can provide IT support for your IT network infrastructure with our range of skills:

- Microsoft Exchange, Microsoft Desktop, Microsoft Server, Microsoft SBS, Microsoft Hyper-V.
- Dell Sonics Wall Security Appliance
- Live Event FoH Sound
- Live Event Video
- Crestron Room Automation
- Dexon Command and Control Video Wall Systems
- Polycom Room Audio Solutions
- Polycom VC Endpoints
- Polycom VC Infrastructure
- Live Event Management
- Troubleshooting
- Communications



PPVS

Facilities Management

PPVS understand that our commercial clients generally prefer the “centralised solution”, they do not want to be bothered with all the issues for tradesmen on site, contractual obligations, etc, they run a business and generally do not have the time or the interest in organising different trades to carry out their projects such as office re-fits, decoration, repairs, security issues etc. PPVS specialise in the organisation of such trades to carry out a first class job!

Our Facilities Management team have experience within:

Access Control systems	Gate Automation
Fire Alarms	Communications systems
Fire extinguishers	Data cabling, including active network devices
Electrical Engineering	Mechanical engineering (Pumps and Valves)
Bricklaying	Plastering
Carpentry	Plumbing
Window fitters	Fabrication
Fencing	Groundwork's
CCTV Installations	Intruder Alarms
Electrical	LED Lighting

Our Accreditation



PPVS

Automation

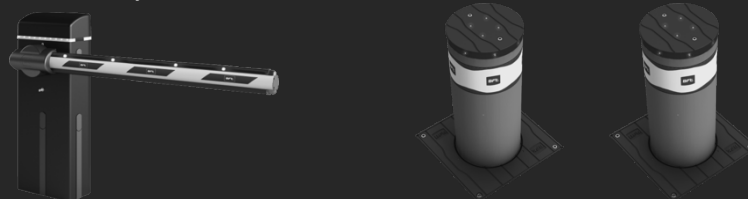
Gate automation has become more popular these days than ever before, its the first line of defence in securing your property. Cars parked on the drive are without a doubt protected more being enclosed than open plan, they can give also a huge amount of privacy to passers by and neighbouring properties. Gate automation can also protect children from running out into the road or pets. Engineers at **PPVS** have been installing gate automation for a **number of years** ranging from solid wooden gates to steel wrought iron fabricated gates to **suit the customers' requirements**. There is nothing better than arriving home pressing a transmitter in the car to automatically opening your gate or gates without getting wet or cold in the winter months. This investment can be a good selling point for your home also, we have installed systems several times for the same customer in different homes, once you have gates automated you will want them again for the **pure security aspect**. Gate automation interlinked with Intercom works extremely well, potential visitors arrive at the entrance unable to gain entry, a button is pressed on the entry speech unit normally installed adjacent to the gate this in turn calls the home owner, a two-way conversation is carried out, if the home owner is happy to see the visitor the gates can be opened automatically. **PPVS** always install safety devices for their gates such as **Photo-electric beams** projecting across the gates, **Inductive loops** underground for vehicles and Safety Ribs which are normally installed on the edge of the gate to prevent trapping or any accidents to occur. **PPVS** offer service contracts for new and most existing gates and barriers. We install systems which are fully compliant to the relevant standards **EN13241-1** for motorised gates.

All our engineers have recently attended a 2-day training programme to ensure **PPVS** are fully compliant with the following standards:

- EN13241 Industrial commercial garage doors and gates - Product standard.
- EN12453 Industrial doors and gates; Safety in use of power operated doors –requirements.
- EN12445 Industrial doors and gates; Safety in the use of power operated doors -Test methods.
- EN12604 Industrial doors and gates; Mechanical Aspects -Test methods.
- EN12605 Industrial doors and gates; Mechanical aspects -Test methods.
- EN60204-1 Safety and machinery; Electrical equipment of machines.

Barriers and Bollards

We install a wide range of barriers and bollards here at PPVS, for the safety of your property or business. Barriers and bollards act as a source of protection, protecting you against trespassers, preventing car parks to become overfilled and dangerous and they also stop through-traffic. They are a clear visual and physical restriction and prevent access to restricted areas and enforce safety.



PPVS

Construction

At **PPVS** we have had many years of experience within the construction sector, from past projects such as domestic property extensions to commercial factory refurbishments – no job is too big or too small!

We also have a competitive supplier for plant machinery for both domestic and commercial construction sites. This means whatever your job needs – we have it covered.

Past projects have ranged from small office refurbishments to securing a number of 100,000 sq. ft factories.

We pride ourselves on being diverse by offering an in-house all trades solution for the customers' project.

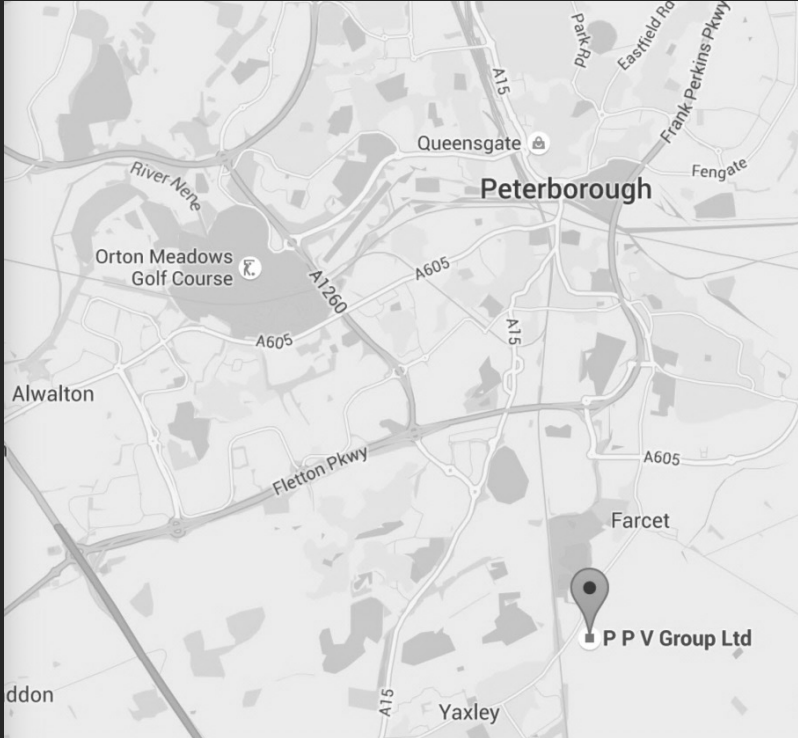
Past construction projects:

- Office refurbishment
- Fencing projects
- General building projects
- Perimeter security
- Plant services
- Domestic refurbishment
- Factory dilapidation
- Groundwork's & trenching
- Bricklaying
- External lighting schemes (including LED)
- Plumbing
- Carpentry
- Painting & decorating
- Roofing



PPVS

Contact Us



We are located at:
7 Talon Court
Yaxley
Peterborough
PE7 3FW

Please contact the office
regarding any enquires on
01733 242497.

We look forward to hearing
from you!

Kind Regards,

PPVS Team

Careers

Here at **PPVS** we are constantly searching for new talent to join our team!

Whether you're looking for a senior management role or apprenticeship we would always consider your application.

Fortunately, at **PPVS** we cover a wide scope of industries and every role covers a number of business areas.

We cover anything from complete facilities management, specialist security systems, electrical installations & maintenance, lighting design schemes to IT & Audio Visual!

What we look for at **PPVS**:

- Facilities, Building, Business & Office Managers.
- Electricians, Plumbers, Carpenters, Bricklayers, Civil Engineers, IT Technicians.
- Financial, Marketing, HR, Insurance officers.
- Apprentices willing to learn through our FM, Electrical, Security, IT & AV sectors.

PPVS

Our Portfolio of Customers

BAKKAVÖR



MEDIA GROUP

centrica

Associated
British Foods
plc



anglianwater nationalgrid



GIORGIO ARMANI



T.C. Harrison Ford



PPVS

Our Accreditation

On 12th August 2016 **PPVS** became fully accredited by National Security Inspectorate within Access Control and CCTV. This means for all our customers they can be assured all **PPVS** staff are fully vetted & competent when installing and auditing systems.

“NSI has provided certification services for over 40 years and is widely recognised by consumers, specifiers, police and insurers as the badge they can trust. NSI approval is only given to those companies that are able to consistently meet our exacting standards.”



Currently at **PPVS** we are registering and applying for NICEIC Approved Contractor, so that means for all of our customers they can be assured all of our electrical work carried out is accredited and certified to British Standards.



Also at **PPVS** we are CHAS, SafeContractor & SMAS approved, meaning we follow the correct procedures when considering health and safety, employee procurement and administration within our company.



PPVS / PPV Solutions Ltd 2016.

© All Rights Reserved.