



PIVOT Care system for people in
vulnerable states

PIVOT – P articipation i n V ulnerability O ver T ime

- **PIVOT** = An axis that enables change of view point and direction
- **Participation** = People's ability to take part in a social context, with and in spite of limitations, at any given time
- **Vulnerability** = A state of being weakened, relates to any and all population
- **OT** = Over Time, through the circle of human life



P I V O T
Wellbeing Systems



P I V O T
Wellbeing Systems

PIVOT – A complete clinical system

- **Knowledge and training system** clinical training for caregivers in a public or private setting No previous professional education needed.
- **Environmental design system** – Pivot creates a specialized care Environment designed specifically for the needs and wellbeing of each of the vulnerable populations we care for
- **Occupation and engagement system** designed for People in all conditions, at all places and hours



PIVOT GOALS

For Caregivers:

- **One common Professional language** in which all the caregivers can communicate, Understand and promote client wellbeing
- **Ready to use clinical operating system** – actual non-pharmacological evidence-based easy to use tools that promote wellbeing and decrease disruptive distress-based behaviors.

For all care participants

- Less expressions of distress – decrease in violent or offensive behavior
- Improvement in Understanding and communication
- Improvement in Wellbeing



PIVOT System Goals

1. **The Humane Question** – if it were me or one of my loved ones, how would I want them to be taken care of
2. **Risk management** – Caring and maintaining physical and mental wellness, Preventing destruction, mess or behavior that others perceive as disruptive
3. **Daily routine and schedule maintenance** – creating a flow within daily activities, the ability to adjust the daily routine to fit individual needs while maintaining a manageable structure. Ability to create content and occupation for each person according to their needs
4. **Visibility** – Every chosen solution has to look good, beneficial and pleasant, or Understood by others when explained



What happens now and The PIVOT vision

Now – The “difficult” or “low functioning” people have distress behaviors that are perceived as violent and destructive

The result: Care facilities are void of content, furniture and equipment that’s considered “dangerous”

Pivot’s vision – If we fulfill people’s needs, give them a sense of security and occupation that suits their needs in a comfortable and pleasant Environment, their wellbeing will improve – and so will the wellbeing of their caregivers and families

The Result: less need for restraining, less harmful behaviors, more wellbeing for all



What makes the PIVOT system unique?

Pivot system translates theoretical knowledge into action and design

- The environment works for the vulnerable people – we put their needs and wellbeing first!
- The environment works for caregivers, taking a load off their shoulders
- Maximum possibility for regulatory processes and wellbeing preferences – through objects, lighting and furniture
- The environment provides opportunities for interaction, being alone, areas that promote interest and engagement and areas for rest and relaxation
- The only measure for success is participation



Creating a PIVOT environment



PIVOT
Wellbeing Systems

PIVOT היא מערכת טיפולית אקולוגית והומאנית המהווה פיתוח ישראלי מקורי וחדשני שפותחה במיוחד עבור אוכלוסיות מאתגרות ופגיעות



PIVOT
Wellbeing Systems

Creating a PIVOT Environment

Assessing the needs of all participants

- Defining the level of safety and protection needed. What are the dangers? What kind of behaviors are prevalent?
- Basic needs – Drinking, warming, a sense of holding and containment – which of these needs are not expressed directly and should be available in the environment?
- Understanding the daily schedule – are non verbal cues like sound and light needed?
- Occupation – What kinds are suitable, how do we keep people occupied throughout the day?



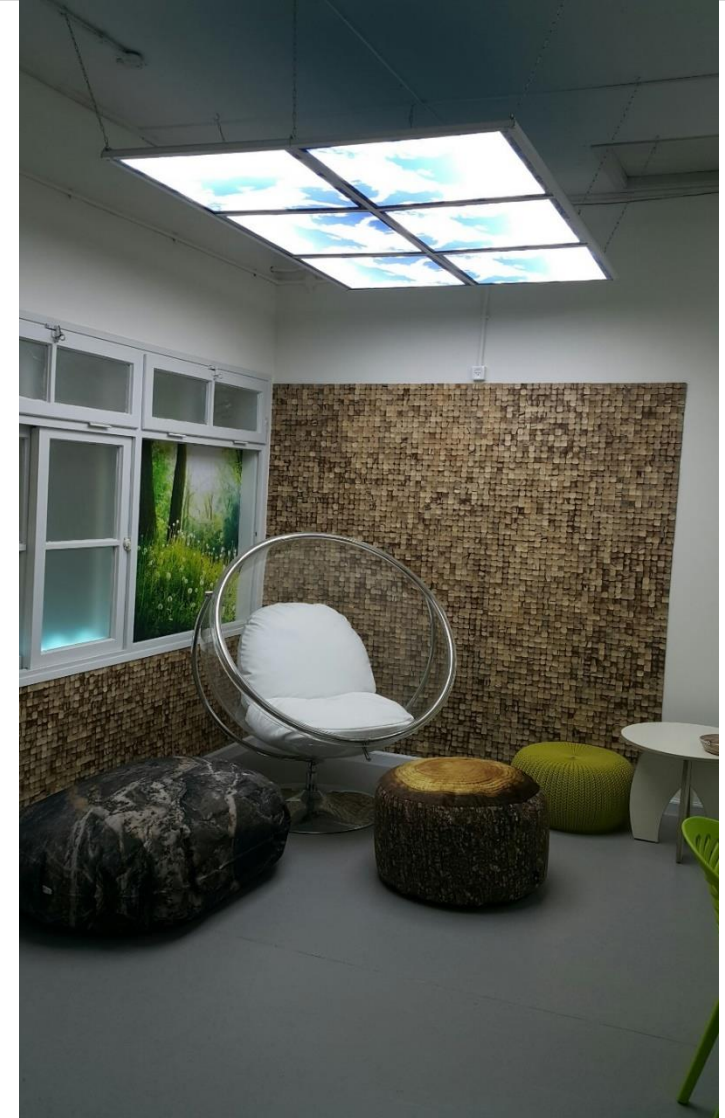
PIVOT Environment design principals

Maximum use of nature – like textures and colors

High durability, low maintenance

Pleasant, cheerful and age appropriate use of color

Clients, Caregivers and staff take part in choosing and staging the equipment and furniture – for maximal connection and participation



Creating a PIVOT Environment

*Lighting

Human Centric Lighting - A special lighting system that follows the intensity and color of natural light and thus regulates melatonin, sleep/wake cycles, mood and alertness

Schedule supportive lighting - In addition to sound cues, lighting is used to support daily routines like shower or meal

Special orientation lighting – for example: guiding people to the toilet at night

Creating a PIVOT Environment

Sound ✱

A Sound system that enables:

- Schedule supportive ques
- Personal listening stations
- Wall hanging Musical instruments – to enable Self expression, support regulation and stabilize mood



Creating a PIVOT Environment

Furniture that gives clients a feeling of Containment and security
Reduces anxiety responses and Enables clients to have peaceful space and
some much needed alone time, even within a crowded space



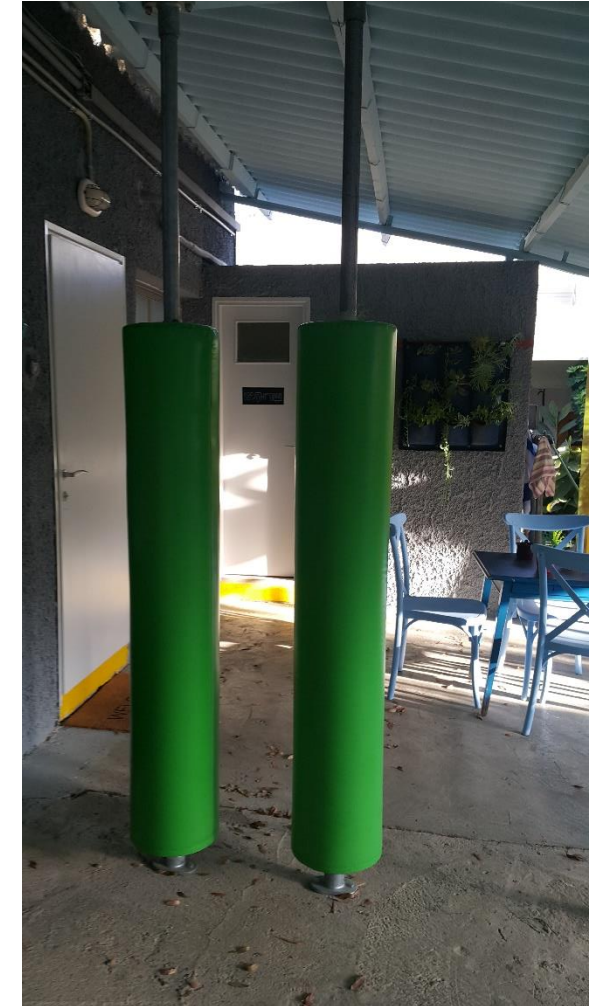
Creating a PIVOT Environment

Non verbal people feel safe and secure both physically and emotionally, when given the opportunity to Be held by furniture or soft equipment



Creating a PIVOT Environment

Deep Pressure touch promotes regulation and Help relieve sensory overload - a common cause of melt downs and tantrums of neuro – atypical people



Creating a PIVOT Environment

Some of our challenges in creating a PIVOT environment is developing safe and effective ways for adults to get voluntary deep – pressure touch
Here is one example of soft brushes, put closely together so that going between them creates a hug effect



Creating a PIVOT Environment

Modularity is essential, clients and caregivers can recreate the PIVOT environment according to their needs – every day

PIVOT environments are designed to look good and provide comfort and choice of wellbeing options



Nature is the greatest healer

We use natural elements to create a feeling of comfort – connected to being outdoors, even when staying indoors



Rebranding

PIVOT implements design Ideas such as Hi-tek work environments, to reduce stigma and aversion – connected to people in severe vulnerability



Changing the context

PIVOT creates attractive environments, full of joy and possibility, to inspire change in the usual context we tend to associate with the names like: "Mental illness", "Autistic people" or "Dementia"

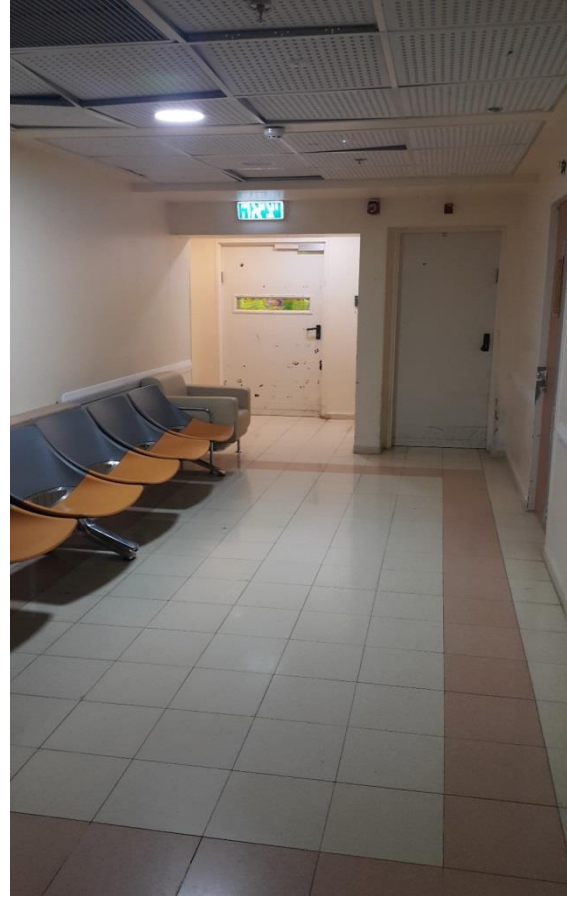


A Ward for Young people with autism

- They were the first to learn PIVOT in 2014
- They asked us to design the ward so they could use the PIVOT system
- Finally after 2 years the funds were donated
- It will happen in October 2017



Ward entrance today



Ward entrance designed by PIVOT



Ward's main hall today



Ward's main hall today



main hall as designed by PIVOT



We're here for
you



PIVOT
Wellbeing Systems

