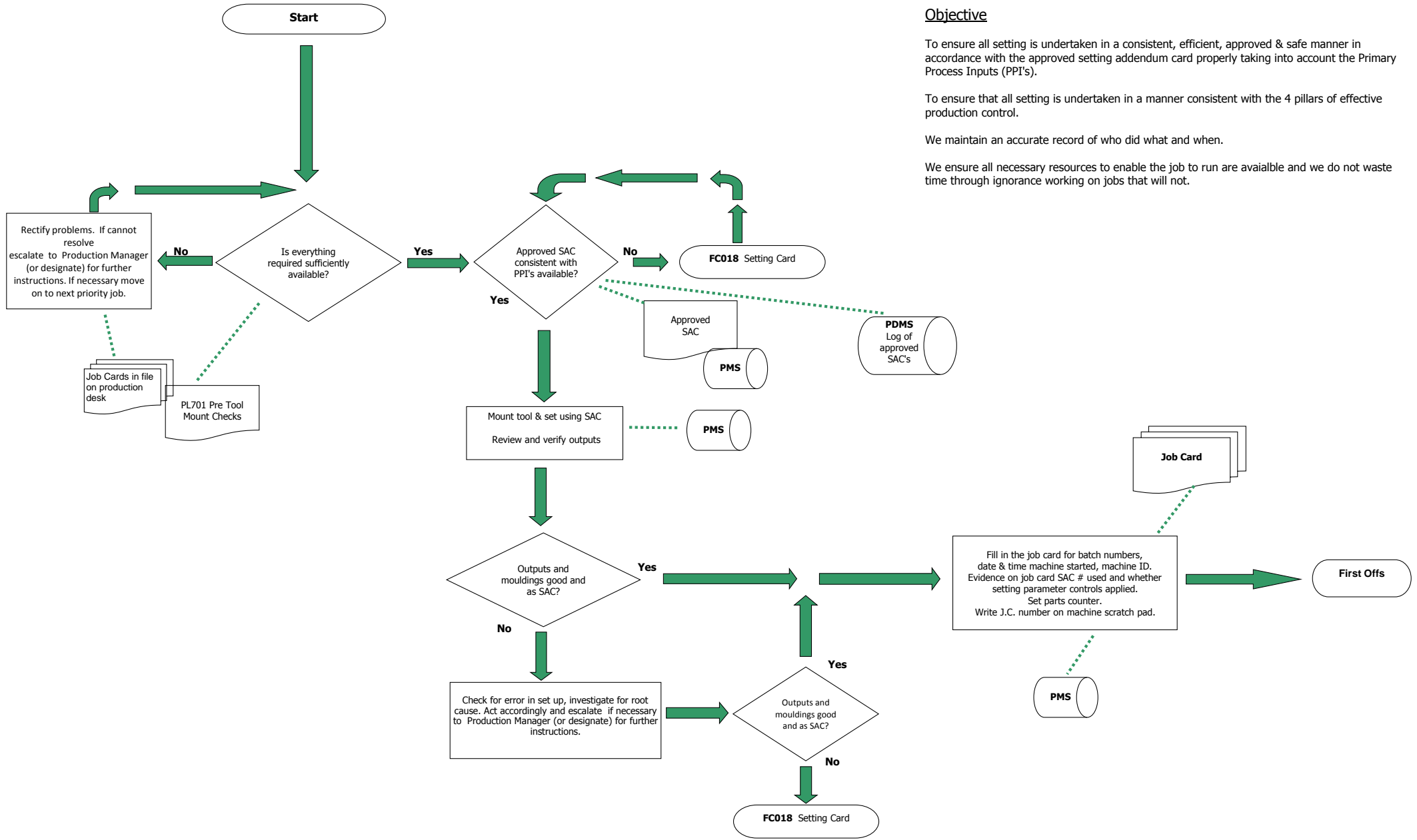


FC 019 Setting



Objective

To ensure all setting is undertaken in a consistent, efficient, approved & safe manner in accordance with the approved setting addendum card properly taking into account the Primary Process Inputs (PPI's).

To ensure that all setting is undertaken in a manner consistent with the 4 pillars of effective production control.

We maintain an accurate record of who did what and when.

We ensure all necessary resources to enable the job to run are available and we do not waste time through ignorance working on jobs that will not.