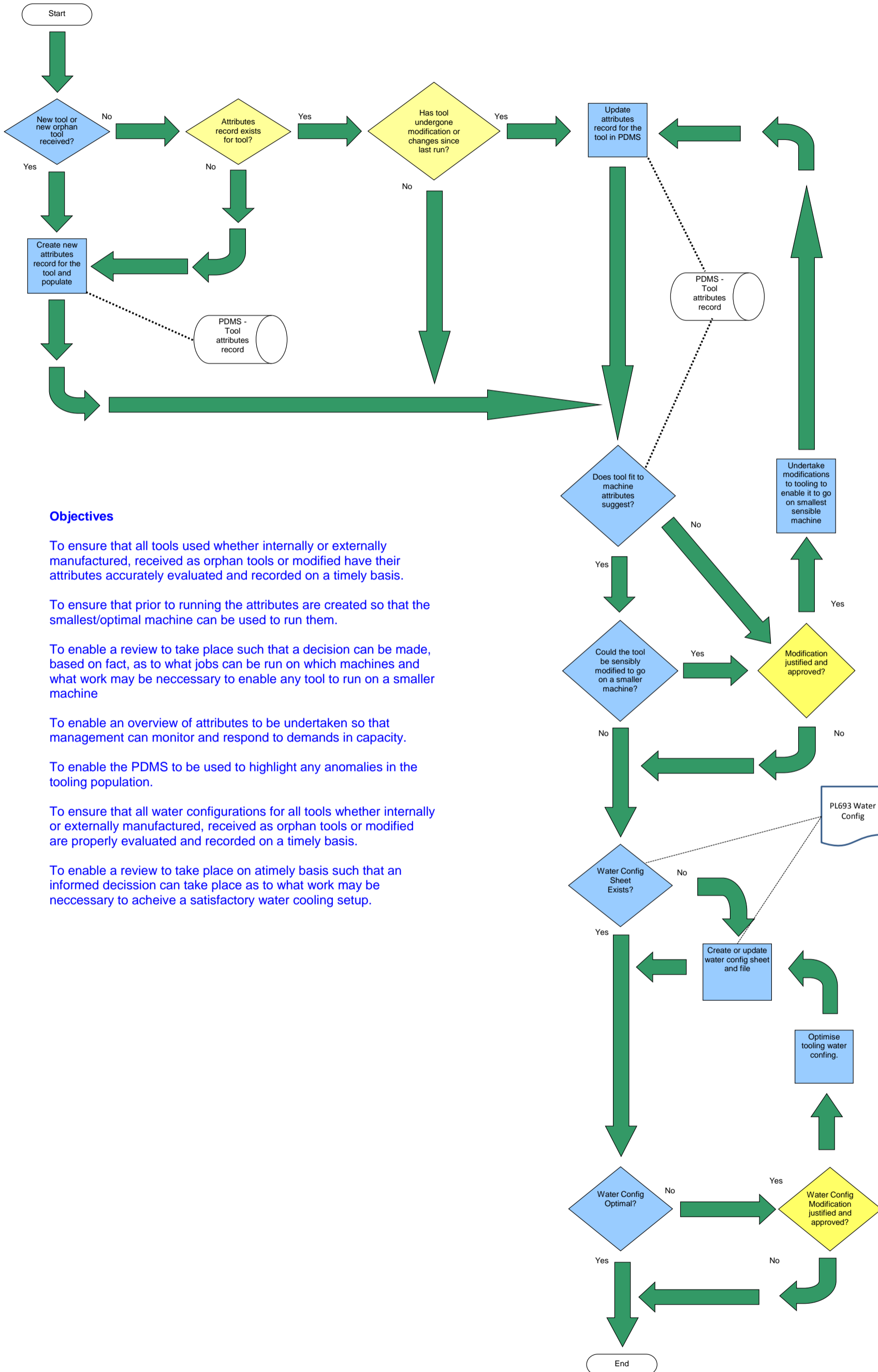


FC042 - Tooling Attributes



Objectives

To ensure that all tools used whether internally or externally manufactured, received as orphan tools or modified have their attributes accurately evaluated and recorded on a timely basis.

To ensure that prior to running the attributes are created so that the smallest/optimal machine can be used to run them.

To enable a review to take place such that a decision can be made, based on fact, as to what jobs can be run on which machines and what work may be necessary to enable any tool to run on a smaller machine

To enable an overview of attributes to be undertaken so that management can monitor and respond to demands in capacity.

To enable the PDMS to be used to highlight any anomalies in the tooling population.

To ensure that all water configurations for all tools whether internally or externally manufactured, received as orphan tools or modified are properly evaluated and recorded on a timely basis.

To enable a review to take place on a timely basis such that an informed decision can take place as to what work may be necessary to achieve a satisfactory water cooling setup.