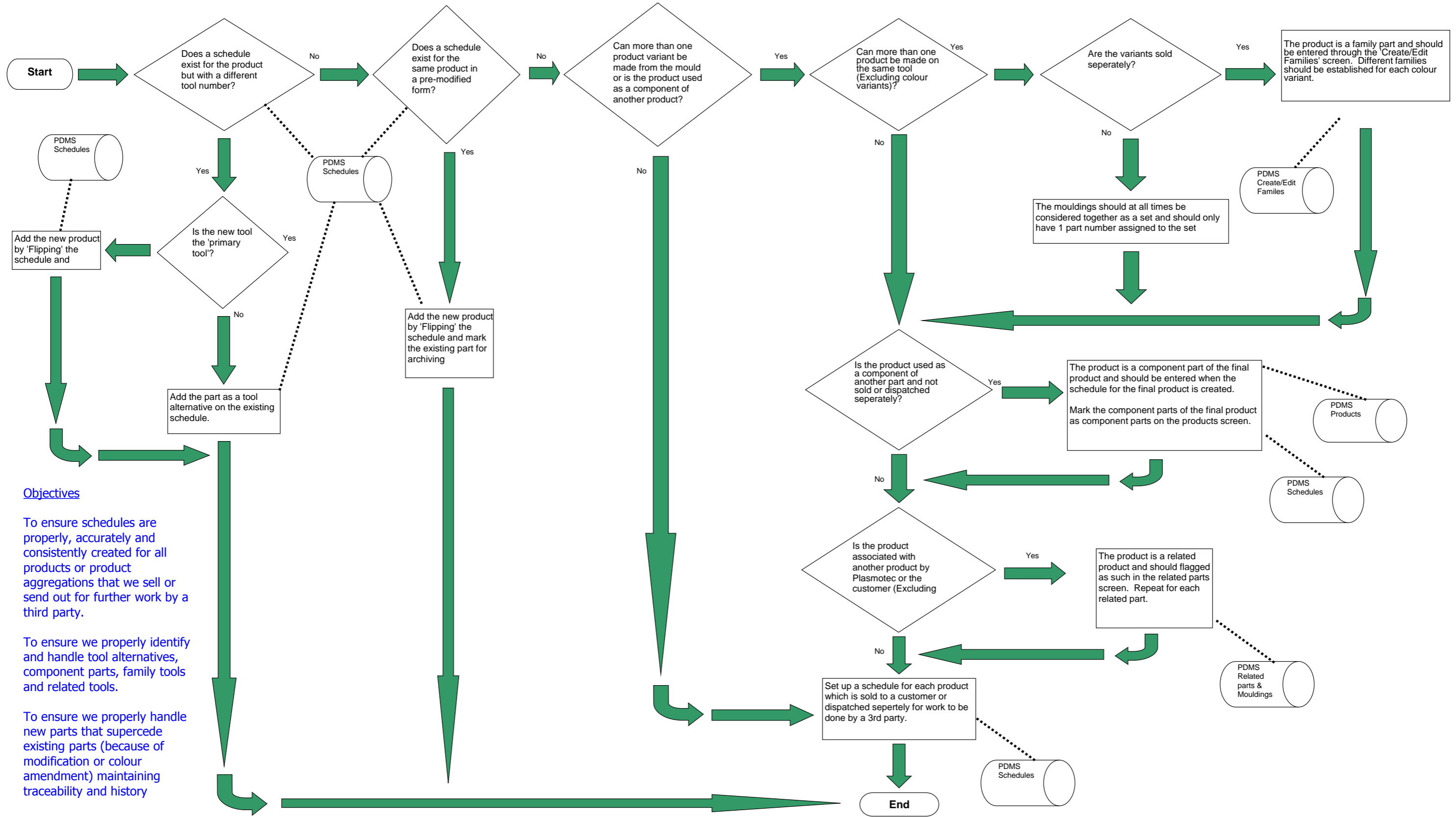


FC 009 Create Schedule / Add New Part To Schedule



Objectives

To ensure schedules are properly, accurately and consistently created for all products or product aggregations that we sell or send out for further work by a third party.

To ensure we properly identify and handle tool alternatives, component parts, family tools and related tools.

To ensure we properly handle new parts that supercede existing parts (because of modification or colour amendment) maintaining traceability and history