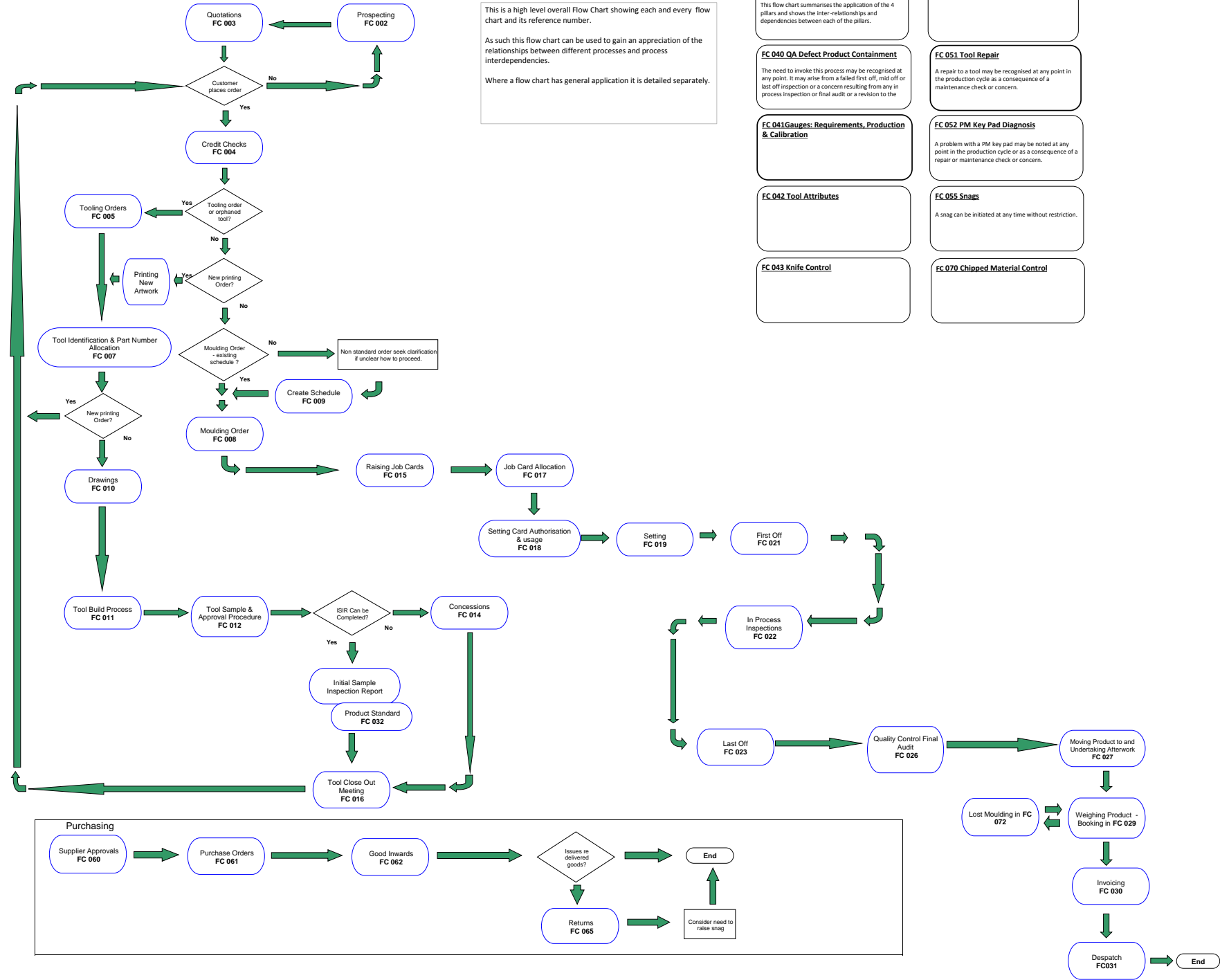


FC 001 Overall Flow Chart



This is a high level overall Flow Chart showing each and every flow chart and its reference number.

As such this flow chart can be used to gain an appreciation of the relationships between different processes and process interdependencies.

Where a flow chart has general application it is detailed separately.

- FC 020 Overview of the 4 Pillars**
This flow chart summarises the application of the 4 pillars and shows the inter-relationships and dependencies between each of the pillars.
- FC 040 QA Defect Product Containment**
The need to invoke this process may be recognised at any point. It may arise from a failed first off, mid off or last off inspection or a concern resulting from any in process inspection or final audit or a revision to the
- FC 041 Gauges: Requirements, Production & Calibration**
- FC 042 Tool Attributes**
- FC 043 Knife Control**
- FC 044 Missing Items**
- FC 051 Tool Repair**
A repair to a tool may be recognised at any point in the production cycle as a consequence of a maintenance check or concern.
- FC 052 PM Key Pad Diagnosis**
A problem with a PM key pad may be noted at any point in the production cycle or as a consequence of a repair or maintenance check or concern.
- FC 055 Snags**
A snag can be initiated at any time without restriction.
- FC 070 Chipped Material Control**