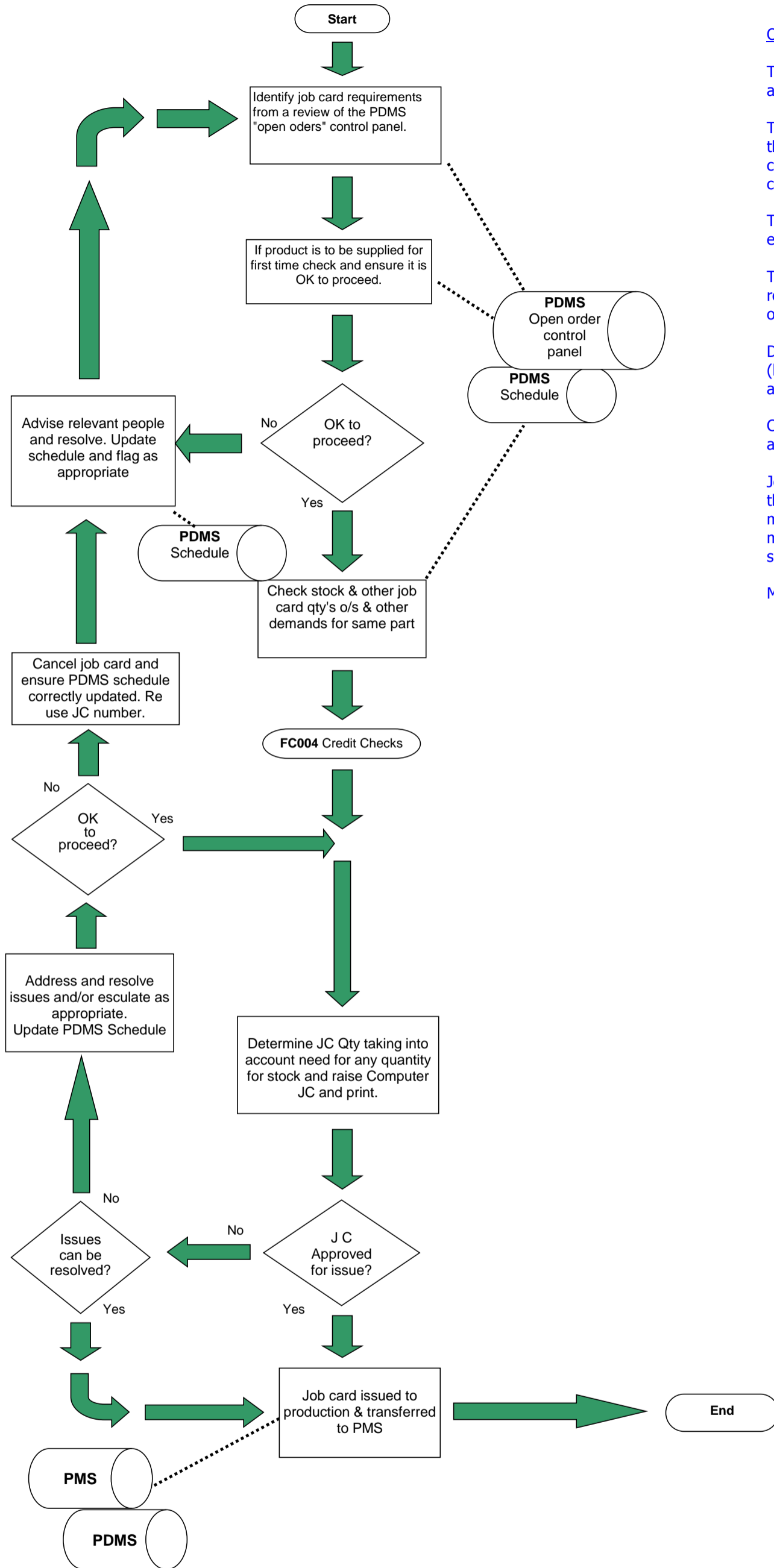


# FC 015 Raising Job Cards



## Objectives

To ensure that all job card requirements are properly and accurately recognised and raised on a timely basis.

To ensure that job cards are only raised for mouldings that are properly required and approved or where concessions exist for quantities that are covered by the concession.

To ensure that we give due regard to the credit exposure associated with the raising of job cards.

To ensure that account is taken of any stock requirements, other job card quantities outstanding and other demands for the same product.

Due regard is given at the time the job card is raised (but not only at that time) to the availability of material and masterbatch.

Care is applied to ensure the accuracy of the job card and the underlying product record.

Job cards are accurate and correctly show and only show the preferred materials, acceptable alternatives and mixes and take account of the likely availability of materials and the correct masterbatch nominal and specific dosage levels.

Materials used are consistent with Specification.