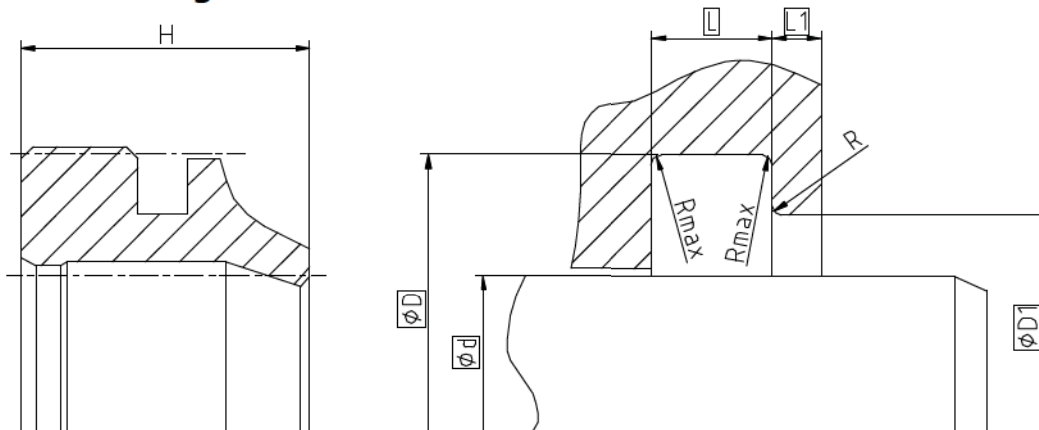


### Seal housing



Surface roughness	Rtmax	Ra
Sliding Surface	≤ 2,5 µm	0,1...0,5 µm
Bottom of groove	≤ 6,3 µm	≤ 1,6 µm
Groove face	≤ 15 µm	≤ 3 µm

Ordering dimensions... □

Bearing area: 50...95% and a cutting depth of 0,5xRz based on Cref = 0%

### Standard dimensions

Ød f8	ØD H11	ØD1 H11	L +0,2	L1	Rmax	R	H
≥ 11 ... ≤ 100	d + 8	d + 4	5	1,5	0,4	≤ 0,3	8
> 100 ... < 150	d + 10	d + 5	6	2		≤ 0,4	9,7
≥ 150 ... ≤ 600	d + 15	d + 7,5	8,5	3		≤ 0,4	13

### Operating parameters

Sealing material	Temperature	max. speed
<b>ECOPUR®</b>	<b>-30 °C...+110 °C</b>	<b>4 m/s</b>
H-ECOPUR™	-20 °C...+110 °C	
S-ECOPUR™	-20 °C...+110 °C	5 m/s
T-ECOPUR™	-50 °C...+110 °C	4 m/s
X-ECOPUR™	-30 °C...+110 °C	4 m/s
XH-ECOPUR™	-20 °C...+110 °C	
XS-ECOPUR™	-20 °C...+110 °C	5 m/s
SKF ECORUBBER-1	-30 °C...+100 °C	4 m/s
SKF ECORUBBER-2	-20 °C...+200 °C	
SKF ECORUBBER-3	-50 °C...+150 °C	
SKF ECORUBBER-H	-25 °C...+150 °C	
SKF ECOFLAS	-10 °C...+200 °C	

The stated operation conditions represent general indications. It is recommended not to use all maximum values simultaneously. Surface speed limits apply only to the presence of adequate lubrication film.

### Ordering example

A12-A, d=50mm, D=58mm, D1=54mm, L=5mm, L1=1,5mm, ECOPUR®

**Wiper A12-A**  
Profile

**50 x 58/54 x 5/1,5**  
d x D/D1 x L/L1

**ECOPUR®**  
Sealing material